



- LS 20.00 knx: Light/brightness sensor for building automation system KNX
  - LS 30.00 knx: Light/brightness and temperature sensor for building automation system KNX
  - Compact housing
  - Simple mounting
  - Also suitable for outdoor use
- Following data and functions will be provided to the KNX bus:**
- Light control
  - Temperature control (LS 30.00 knx only)
  - Twilight switch with daily program
  - Daily time switch

**Connect** switching controlling counting

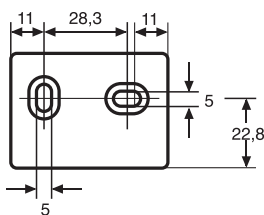
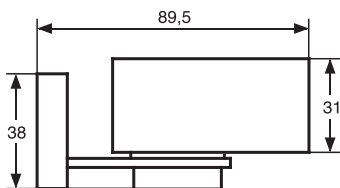
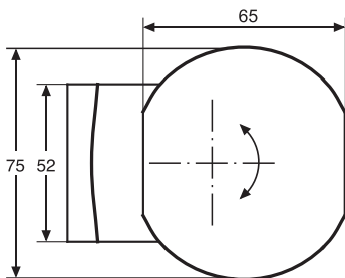
## Brightness sensors LS 20.00 knx Brightness and temperature sensors LS 30.00 knx for wall mounting

**Highlights**

- LS 20.00 knx: Light/brightness sensor
- LS 30.00 knx: Light/brightness sensor and temperature sensor

**Technical data**

|   |                                       |
|---|---------------------------------------|
| <b>Power supply</b>   | via KNX bus voltage                   |
| <b>Bus current</b>  | approx. 10 mA                         |
| <b>Bus system</b>   | KNX                                   |
| <b>Measuring range light sensor</b>                           | 1 ... 22.000 Lux                      |
| <b>Measuring range temperature sensor (LS 30.00 knx only)</b> | -30°...+55°C                          |
| <b>Permitted ambient temperature</b>                          | -30°...+55°C                          |
| <b>Housing</b>  | self-extinguishing thermoplastic      |
| <b>Mounting</b>   | wall mounting (with included bracket) |
| <b>Type of protection</b>                                     | IP 54 (DIN EN 60529)                  |
| <b>Type of connection</b>                                     | KNX bus terminal                      |



| Order Number   | Version                                   | Sensors                       |
|----------------|---|-------------------------------|
| ✓ LS 20.00 knx | for wall mounting (with included bracket) | Light/brightness              |
| ✓ LS 30.00 knx | for wall mounting (with included bracket) | Light/brightness, temperature |

▼ Housing colour