



STANDARD EXECUTIONS

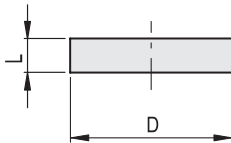
- **RMA-US-SC:** (SmCo) Samarium cobalt magnet, resistant to temperatures up to 200°C.
 - **RMA-US-ND:** (NdFeB) Neodymium- iron-boron magnet, resistant to temperatures up to 80°C, nickel-plated finish.
- See Guidelines for the choosing (on page 1052).

FEATURES AND APPLICATIONS

RMA-US retaining magnets are unshielded round magnets. They are mostly attached by gluing. When used without air gap, RMA-US unshielded magnets have lower adhesive forces than the magnet systems RMA (see page 1054) in which magnetic shielding increases enormously the intensity of the adhesive force acting on the surface.

SPECIAL EXECUTIONS ON REQUEST

Retaining magnet made of ferrite, resistant to temperatures up to 200°C.



RMA-US-SC

| Code | Description | D±0.1 | L±0.1 | Nominal adhesive forces* [N] | ⚖️ |
|--------|----------------|-------|-------|------------------------------|----|
| 501091 | RMA-US-SC-4-3 | 4 | 3 | 2.5 | 1 |
| 501092 | RMA-US-SC-5-3 | 5 | 3 | 3.5 | 1 |
| 501093 | RMA-US-SC-6-3 | 6 | 3 | 4 | 1 |
| 501094 | RMA-US-SC-8-3 | 8 | 3 | 8 | 1 |
| 501095 | RMA-US-SC-10-3 | 10 | 3 | 10 | 2 |
| 501096 | RMA-US-SC-12-3 | 12 | 3 | 11 | 3 |
| 501097 | RMA-US-SC-15-3 | 15 | 3 | 16 | 4 |
| 501098 | RMA-US-SC-18-3 | 18 | 3 | 25 | 6 |
| 501099 | RMA-US-SC-24-3 | 24 | 3 | 36 | 11 |

RMA-US-ND

| Code | Description | D±0.1 | L±0.1 | Nominal adhesive forces* [N] | ⚖️ |
|--------|----------------|-------|-------|------------------------------|----|
| 501081 | RMA-US-ND-4-3 | 4 | 3 | 4 | 1 |
| 501082 | RMA-US-ND-5-3 | 5 | 3 | 5 | 1 |
| 501083 | RMA-US-ND-6-3 | 6 | 3 | 7.5 | 1 |
| 501084 | RMA-US-ND-8-3 | 8 | 3 | 13 | 1 |
| 501085 | RMA-US-ND-10-3 | 10 | 3 | 15 | 2 |
| 501086 | RMA-US-ND-12-3 | 12 | 3 | 20 | 2 |
| 501087 | RMA-US-ND-15-3 | 15 | 3 | 28 | 4 |
| 501088 | RMA-US-ND-18-3 | 18 | 3 | 35 | 5 |
| 501089 | RMA-US-ND-20-3 | 20 | 3 | 42 | 7 |
| 501090 | RMA-US-ND-24-3 | 24 | 3 | 55 | 10 |

* The values of the nominal adhesive forces are approximate and refer to magnetic properties observed on laboratory samples.

STANDARD EXECUTION

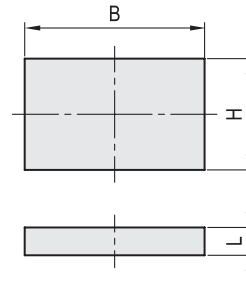
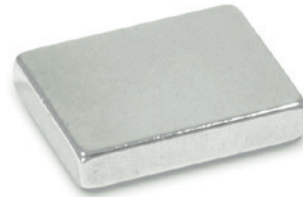
- **RMX-US-SC:** (SmCo) Samarium cobalt magnet, resistant to temperatures up to 200°C.
 - **RMX-US-ND:** (NdFeB) Neodymium- iron-boron magnet, resistant to temperatures up to 80°C, nickel-plated finish.
- Technical Data (on page 1054).

FEATURES AND APPLICATIONS

RMX-US retaining magnets are unshielded flat magnets. They are mostly attached by gluing. When used without air gap, RMX-US unshielded magnets have lower adhesive forces than the magnet systems RMA (see page 1054) in which magnetic shielding increases enormously the intensity of the adhesive force acting on the surface.

SPECIAL EXECUTIONS ON REQUEST

- Retaining magnet made of ferrite, resistant to temperatures up to 200°C.
- Other dimensions.



RMX-US-SC

| Code | Description | B±0.1 | H±0.1 | L±0.1 | Nominal adhesive forces* [N] | ⚖️ |
|--------|-----------------------|-------|-------|-------|------------------------------|----|
| 503231 | RMX-US-SC-7.5-4-1.5 | 7.5 | 4 | 1.5 | 3.4 | 1 |
| 503233 | RMX-US-SC-7.5-6-2 | 7.5 | 6 | 2 | 5 | 1 |
| 503235 | RMX-US-SC-10-7.5-2 | 10 | 7.5 | 2.5 | 7.5 | 1 |
| 503237 | RMX-US-SC-12-9.5-2.5 | 12 | 9.5 | 2.5 | 11 | 2 |
| 503239 | RMX-US-SC-16-12.5-2.5 | 16 | 12.5 | 2.5 | 15 | 4 |
| 503241 | RMX-US-SC-18-16.5-4 | 18 | 16.5 | 4 | 29 | 10 |
| 503243 | RMX-US-SC-26-20.3-5 | 26 | 20.3 | 5 | 51 | 22 |
| 503245 | RMX-US-SC-33-26.3-6.5 | 33 | 26.3 | 6.5 | 85 | 47 |

RMX-US-ND

| Code | Description | B±0.1 | H±0.1 | L±0.1 | Nominal adhesive forces* [N] | ⚖️ |
|--------|-----------------------|-------|-------|-------|------------------------------|----|
| 503201 | RMX-US-ND-7.5-4-1.5 | 7.5 | 4 | 1.5 | 5 | 1 |
| 503203 | RMX-US-ND-7.5-6-2 | 7.5 | 6 | 2 | 8 | 1 |
| 503205 | RMX-US-ND-10-7.5-2 | 10 | 7.5 | 2 | 11 | 1 |
| 503207 | RMX-US-ND-12-9.5-2.5 | 12 | 9.5 | 2.5 | 17 | 2 |
| 503209 | RMX-US-ND-16-12.5-2.5 | 16 | 12.5 | 2.5 | 24 | 4 |
| 503211 | RMX-US-ND-18-16.5-4 | 18 | 16.5 | 4 | 50 | 9 |
| 503213 | RMX-US-ND-26-20.3-5 | 26 | 20.3 | 5 | 77 | 20 |
| 503215 | RMX-US-ND-33-26.3-6.5 | 33 | 26.3 | 6.5 | 125 | 42 |

* The values of the nominal adhesive forces are approximate and refer to magnetic properties of laboratory samples.



Industrial magnets