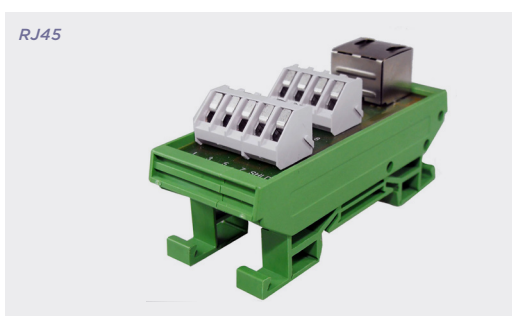


002
PCB TERMINAL
BLOCKS081
TERMINAL STRIPS095
WIRE TO BOARD
CONNECTORS100
CIRCULAR
CONNECTORS151
IP68 CONNECTORS158
INTERFACE
MODULES AND
RELAY BASES

RJ45 interface module

Product overview

- Single RJ45 (8P8C) type socket to screw terminals
- Terminals marked 1 to 8 (+ shield)
- Separate shield connection
- 35mm DIN Rail mounting
- Option for 32mm (G) rail mounting
- 45° terminals for easy access
- RoHS compliant
- SVHC free (2012)
- Optional wall mounting plates are available (CIME/M/MPR)
- Connect Profinet cable: Yellow (TD+) Pin 1, Orange (TD-) Pin 2, White (RD+) Pin 3, Blue (RD-) Pin 6. Shield to Shield
- **CE** approved



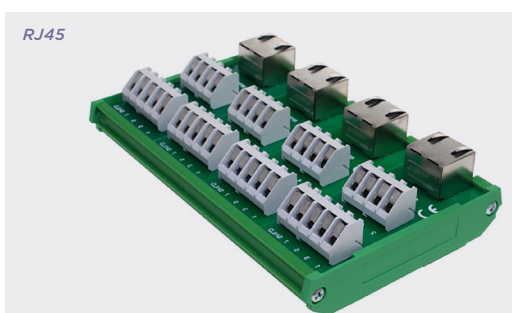
PART NO.	DESCRIPTION
CIM/RJ45	RJ45 to screw terminal interface. 35 mm DIN Rail mounting

SPECIFICATION	
Rating	30V DC 100mA
Cable entry	0.2-4m ² (30-12 AWG)
Terminal screw	M3
Strip length	6mm (0.24")
Max terminal torque	0.5Nm (4lb-in)
Dimensions:	
Height	45mm (1.77")
Width	83mm (3.27")
Length	34mm (1.02")

RJ45 multiway interface modules

Product overview

- Multiway RJ45 (8P8C) type socket to screw terminals
- Separate shield connection
- 35mm DIN Rail mounting
- Option for 32mm (G) rail mounting
- 45° terminals for easy access
- RoHS compliant
- SVHC free (2012)
- Optional wall mounting plates are available (CIME/M/MPR)
- **CE** approved



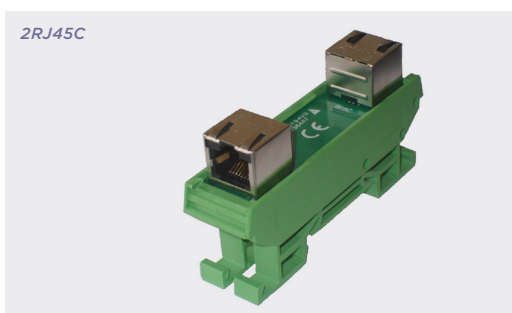
PART NO.	DESCRIPTION	LENGTH
CIM/RJ45-4	RJ45 to screw 4 way	127mm
CIM/RJ45-6	RJ45 to screw 6 way	191mm
CIM/RJ45-8	RJ45 to screw 8 way	255mm

SPECIFICATION	
Rating	30V DC 100mA
Cable entry	0.2-4m ² (30-12 AWG)
Terminal screw	M3
Strip length	6mm (0.24")
Max terminal torque	0.5Nm (4lb-in)
Dimensions:	
Length	45mm (1.77")
Width	83mm (3.27")
Height	34mm (1.02")

RJ45 coupler

Product overview

- Two RJ45 (8P8C) type shielded sockets
- Connected pin to pin (1 to 1, 2 to 2 etc)
- 35mm DIN Rail mounting
- Option for 32mm (G) rail mounting
- Reverse tab sockets for ease of cable release
- RoHS compliant
- SVHC free (2013)
- Optional wall mounting plates are available (CIME/M/MPR)
- **CE** approved



PART NO.	DESCRIPTION
CIM/2RJ45C	RJ45 to RJ45 coupler. 35 mm Din Rail mounting

SPECIFICATION	
Rating	50V DC 500mA
Dimensions:	
Height	42mm (1.66")
Width	83mm (3.27")
Length	23mm (0.91")

ASSOCIATED PRODUCTS

CIME/M/MPR

- Wall mount plates

page 168