

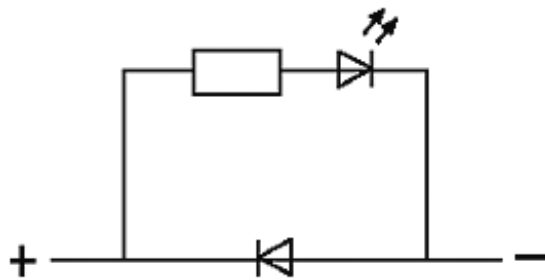
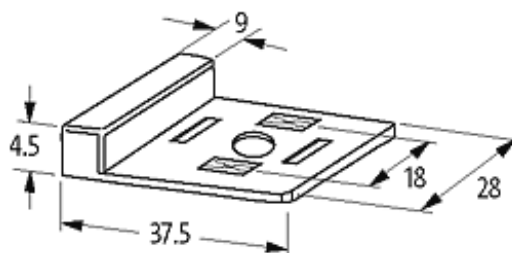
EMC-SUPPRESSORS FOR VALVE PLUG

Diode and LED, 24VDC/60VA/W

24 V AC/DC

Diode + LED (green)

Remove plug gasket when fitting adapter. Other LED colors on request.

[Link to Product](#)**Illustration****LED + Diode**

Product may differ from Image

Technical Data

LED display	(yellow opac)
Contact material	Silvered bronze
Switch off peak	1 V
Switch off delay time	max. 200 ms
Max. power (W)	max. 60 W(VA)
Pin spacing	Form A (18 mm)
Material	PUR

General data

Temperature range	-20...+60 °C
Dimensions H × W × D	4.5×37.5×28 mm

Commercial data

country of origin	DE
customs tariff number	85363010
minimum order quantity	1