



UNDervOLTAGE RELEASE, AC 230V/50HZ, AC 240V/60HZ, W. SCREW CONNECTION; FOR CIRCUIT-BREAKERS 3RV2

General technical data:

product brand name		SIRIUS
Product designation		undervoltage release
Size of the circuit-breaker		S00, S0, S2
Design of the product		<kein Wert>
Suitability for use		motor circuit breaker
Protection class IP on the front		IP20
Design of short-circuit protection		fuse
Degree of pollution		3
Insulation voltage Rated value	V	690
Insulation voltage with degree of pollution 3 Rated value	V	690
Ambient temperature		
• during storage	°C	-50 ... +80
• during operation	°C	-20 ... +60
Equipment marking acc. to DIN 40719 extended according to IEC 204-2 acc. to IEC 750		F
Equipment marking acc. to DIN EN 61346-2		F

Auxiliary circuit:

Number of NC contacts for auxiliary contacts instantaneous contact		0
Number of NO contacts for auxiliary contacts instantaneous contact		0
Number of NO contacts for auxiliary contacts leading contact		0

Number of CO contacts of the auxiliary contacts instantaneous contact		0
Control circuit/ Control:		
Type of voltage of the control supply voltage		AC
Control supply voltage frequency		
<ul style="list-style-type: none"> 1 <ul style="list-style-type: none"> Rated value Initial rated value Final rated value 2 Rated value 	Hz Hz	<kein Wert> 50 60 <kein Wert>
Control supply voltage		
<ul style="list-style-type: none"> 1 <ul style="list-style-type: none"> for DC <ul style="list-style-type: none"> Rated value Initial rated value Final rated value with AC <ul style="list-style-type: none"> at 50 Hz Rated value at 50 Hz Initial rated value at 50 Hz Final rated value at 60 Hz Rated value at 60 Hz Final rated value at 60 Hz Initial rated value 2 <ul style="list-style-type: none"> for DC Rated value with AC <ul style="list-style-type: none"> at 50 Hz Rated value at 60 Hz Rated value 	V V	<kein Wert> <kein Wert> <kein Wert> 230 <kein Wert> <kein Wert> 240 <kein Wert> <kein Wert> <kein Wert> <kein Wert>
Installation/ mounting/ dimensions:		
Mounting type		snap-on mounting
Width	mm	18.5
Height	mm	90
Depth	mm	68
Required spacing with side-by-side mounting		
<ul style="list-style-type: none"> forwards Backwards upwards downwards at the side 		<kein Wert> <kein Wert> <kein Wert> <kein Wert> <kein Wert>
Required spacing for grounded parts		
<ul style="list-style-type: none"> forwards 		<kein Wert>

- Backwards
- upwards
- at the side
- downwards

<kein Wert>
<kein Wert>
<kein Wert>
<kein Wert>

Required spacing for live parts

- forwards
- Backwards
- upwards
- downwards
- at the side

<kein Wert>
<kein Wert>
<kein Wert>
<kein Wert>
<kein Wert>

Certificates/ approvals:

Certificate of suitability

CE / UL / CSA

General Product Approval

Declaration of Conformity

Test Certificates

Shipping Approval



CSA



UL



EG-Konf.

[Special Test
Certificate](#)

[Type Test
Certificates/Test
Report](#)



ABS

Shipping Approval



DNV



GL



LRS



PRS



RINA

Shipping Approval

other



RMRS

[Environmental
Confirmations](#)



VDE

[other](#)

Further information

Information- and Downloadcenter (Catalogs, Brochures,...)

<http://www.siemens.com/industrial-controls/catalogs>

Industry Mall (Online ordering system)

<http://www.siemens.com/industrymall>

Cax online generator

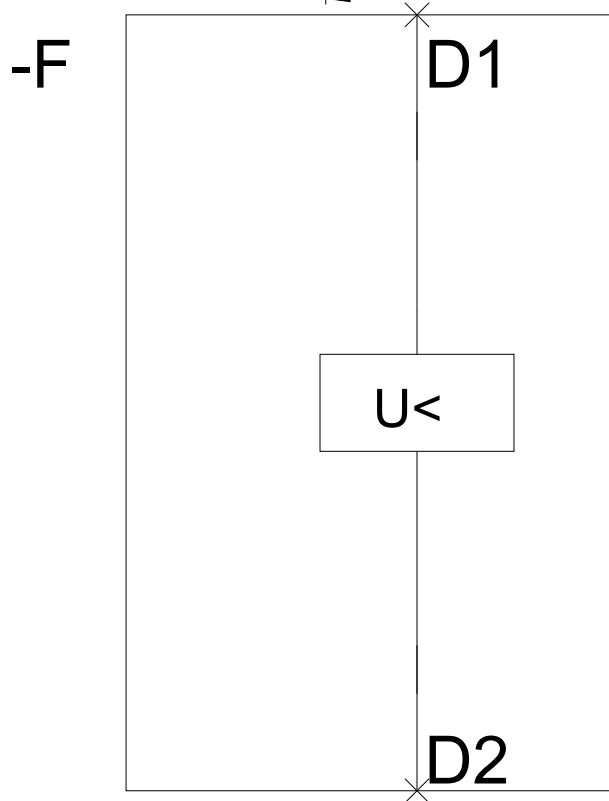
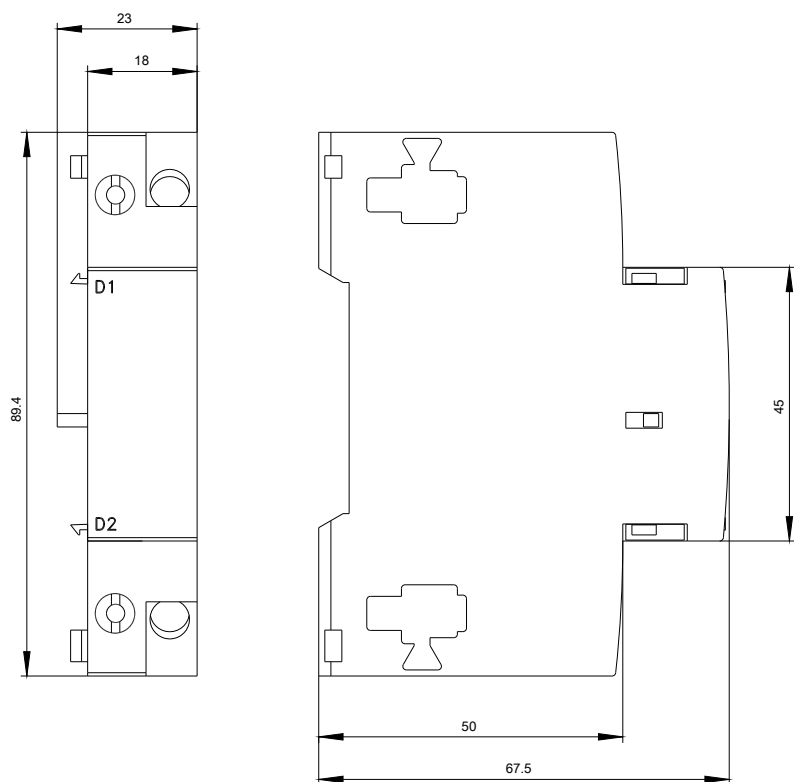
<http://support.automation.siemens.com/WW/CAXorder/default.aspx?lang=en&mlfb=3RV29021AP0>

Service&Support (Manuals, Certificates, Characteristics, FAQs,...)

<http://support.automation.siemens.com/WW/view/en/3RV29021AP0/all>

Image database (product images, 2D dimension drawings, 3D models, device circuit diagrams, EPLAN macros, ...)

<http://www.automation.siemens.com/bilddb/index.aspx?attID9=3RV29021AP0&lang=en>



last modified:

09.03.2015