

- 1
- 2
- 3
- 4
- 5
- 6
- 7
- 8
- 9
- 10
- 11
- 12
- 13
- 14
- 15
- 16
- 17
- 18

STANDARD EXECUTIONS

Die-cast zinc alloy handle shanks, with epoxy resin coating, threaded blind holes. Fixation to the tube by means of two screws.

- **GN 333.1-EL**: anodised aluminium tube, natural colour. Handle shanks RAL 9005 black colour, matte finish.
- **GN 333.1-ES**: anodised aluminium tube, natural colour. Handle shanks RAL 9006 grey colour, matte finish.
- **GN 333.1-SW**: aluminium tube with epoxy resin coating, RAL 9005 black colour, matte finish. Handle shanks RAL 9005 black colour, matte finish.

END CAPS

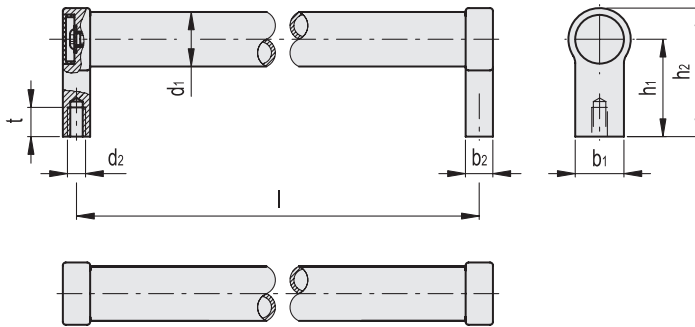
Polyamide based (PA) technopolymer, light grey colour.

FEATURES AND APPLICATIONS

Two screws tighten the tube to the handle shanks, preventing rotation. These handles are typically used on turning or rolling doors.

SPECIAL EXECUTIONS ON REQUEST

Different lengths.



Code	Description	d1	l±0.25	d2	b1	b2	h1	h2	tmin	⚖️
GN.27656	GN 333.1-20-180-A-EL	20	180	M6	24	12	42	54	12	180
GN.27657	GN 333.1-20-180-A-ES	20	180	M6	24	12	42	54	12	180
GN.27658	GN 333.1-20-180-A-SW	20	180	M6	24	12	42	54	12	180
GN.27674	GN 333.1-20-200-A-EL	20	200	M6	24	12	42	54	12	200
GN.27695	GN 333.1-20-200-A-ES	20	200	M6	24	12	42	54	12	200
GN.27675	GN 333.1-20-200-A-SW	20	200	M6	24	12	42	54	12	200
GN.27676	GN 333.1-20-300-A-EL	20	300	M6	24	12	42	54	12	240
GN.27696	GN 333.1-20-300-A-ES	20	300	M6	24	12	42	54	12	240
GN.27677	GN 333.1-20-300-A-SW	20	300	M6	24	12	42	54	12	240
GN.27678	GN 333.1-20-400-A-EL	20	400	M6	24	12	42	54	12	270
GN.27697	GN 333.1-20-400-A-ES	20	400	M6	24	12	42	54	12	270
GN.27679	GN 333.1-20-400-A-SW	20	400	M6	24	12	42	54	12	270
GN.27681	GN 333.1-28-200-A-EL	28	200	M8	25	14	50	66	14	340
GN.27683	GN 333.1-28-200-A-ES	28	200	M8	25	14	50	66	14	340
GN.27682	GN 333.1-28-200-A-SW	28	200	M8	25	14	50	66	14	340
GN.27686	GN 333.1-28-300-A-EL	28	300	M8	25	14	50	66	14	390
GN.27688	GN 333.1-28-300-A-ES	28	300	M8	25	14	50	66	14	390
GN.27687	GN 333.1-28-300-A-SW	28	300	M8	25	14	50	66	14	390
GN.27691	GN 333.1-28-500-A-EL	28	500	M8	25	14	50	66	14	480
GN.27693	GN 333.1-28-500-A-ES	28	500	M8	25	14	50	66	14	480
GN.27692	GN 333.1-28-500-A-SW	28	500	M8	25	14	50	66	14	480