

- 1
- 2
- 3
- 4
- 5
- 6
- 7
- 8
- 9
- 10
- 11
- 12
- 13
- 14
- 15
- 16
- 17
- 18

THREADED BODY, LIFTING LEVER AND PLUNGER

Zinc-plated steel (ST index).
AISI 303 stainless steel (NI index).

SPRING

AISI 301 stainless steel.

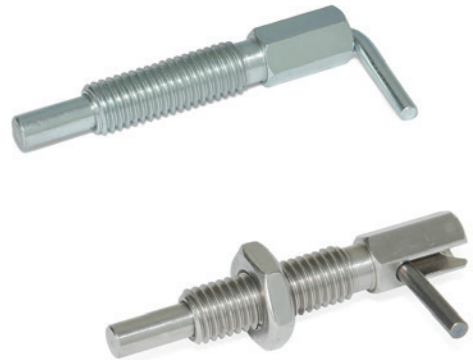
STANDARD EXECUTIONS

- **GN 7017-B**: without rest position and without locking nut.
- **GN 7017-BK**: without rest position, with locking nut.
- **GN 7017-C**: with rest position, without locking nut.
- **GN 7017-CK**: with rest position and locking nut.

Index for material of the threaded body and the locking nut:
- **ST**: zinc-plated steel.
- **NI**: AISI 303 stainless steel.

ASSEMBLY INSTRUCTIONS

During assembly, do not exceed the value of the tightening torque indicated in the table for fastening the locking nut.

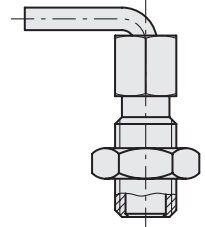
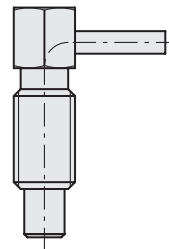
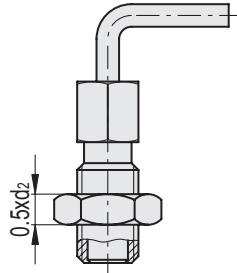
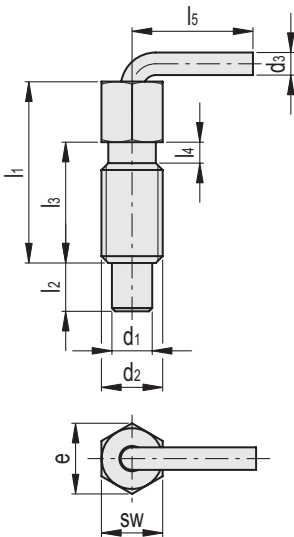


GN 7017-B

GN 7017-BK

GN 7017-C

GN 7017-CK



GN 7017-B-ST

Code	Description	d1										Maximum tightening			
		Plunger h11 Hole +0.08+0.03	d2	d3	e	l1	l2	l3	l4	l5	sw	torque [Nm]	[N]*	[N]#	Δ
GN.71002	GN 7017-4-M6-B-ST	4	M6	2.5	6.9	32	9.5	20	2.5	16	6	1.6	3	10	6
GN.71006	GN 7017-5-M8-B-ST	5	M8	3	9.2	42	12	27	3.1	19.5	8	4.5	3.5	13.5	15
GN.71010	GN 7017-6-M10-B-ST	6	M10	3.5	11.5	51	14	33.5	3.7	24	10	10	4	16	28
GN.71014	GN 7017-8-M12-B-ST	8	M12	5	13.8	54	19	31.8	4.3	32	12	13	4	22	47
GN.71018	GN 7017-10-M16-B-ST	10	M16	5	19.6	77.5	25	50.5	5	33.5	16	42	4	23	110

GN 7017-B-NI

Code	Description	d1										Maximum tightening			
		Plunger h11 Hole +0.08+0.03	d2	d3	e	l1	l2	l3	l4	l5	sw	torque [Nm]	[N]*	[N]#	Δ
GN.71001	GN 7017-4-M6-B-NI	4	M6	2.5	6.9	32	9.5	20	2.5	16	6	1.6	3	10	6
GN.71005	GN 7017-5-M8-B-NI	5	M8	3	9.2	42	12	27	3.1	19.5	8	4.5	3.5	13.5	15
GN.71009	GN 7017-6-M10-B-NI	6	M10	3.5	11.5	51	14	33.5	3.7	24	10	10	4	16	28
GN.71013	GN 7017-8-M12-B-NI	8	M12	5	13.8	54	19	31.8	4.3	32	12	13	4	22	47
GN.71017	GN 7017-10-M16-B-NI	10	M16	5	19.6	77.5	25	50.5	5	33.5	16	42	4	23	110

* Spring preload
Spring maximum load

GN 7017-BK-ST

Code	Description	d1										Maximum tightening			
		Plunger h11 Hole +0.08+0.03	d2	d3	e	l1	l2	l3	l4	l5	sw	torque [Nm]	[N]*	[N]#	⚖
GN.71032	GN 7017-4-M6-BK-ST	4	M6	2.5	6.9	32	9.5	20	2.5	16	6	1.6	3	10	8
GN.71036	GN 7017-5-M8-BK-ST	5	M8	3	9.2	42	12	27	3.1	19.5	8	4.5	3.5	13.5	18
GN.71040	GN 7017-6-M10-BK-ST	6	M10	3.5	11.5	51	14	33.5	3.7	24	10	10	4	16	33
GN.71044	GN 7017-8-M12-BK-ST	8	M12	5	13.8	54	19	31.8	4.3	32	12	13	4	22	56
GN.71048	GN 7017-10-M16-BK-ST	10	M16	5	19.6	77.5	25	50.5	5	33.5	16	42	4	23	130

GN 7017-BK-NI

INOX STAINLESS STEEL

Code	Description	d1										Maximum tightening			
		Plunger h11 Hole +0.08+0.03	d2	d3	e	l1	l2	l3	l4	l5	sw	torque [Nm]	[N]*	[N]#	⚖
GN.71031	GN 7017-4-M6-BK-NI	4	M6	2.5	6.9	32	9.5	20	2.5	16	6	1.6	3	10	8
GN.71035	GN 7017-5-M8-BK-NI	5	M8	3	9.2	42	12	27	3.1	19.5	8	4.5	3.5	13.5	18
GN.71039	GN 7017-6-M10-BK-NI	6	M10	3.5	11.5	51	14	33.5	3.7	24	10	10	4	16	33
GN.71043	GN 7017-8-M12-BK-NI	8	M12	5	13.8	54	19	31.8	4.3	32	12	13	4	22	56
GN.71047	GN 7017-10-M16-BK-NI	10	M16	5	19.6	77.5	25	50.5	5	33.5	16	42	4	23	130

GN 7017-C-ST

Code	Description	d1										Maximum tightening			
		Plunger h11 Hole +0.08+0.03	d2	d3	e	l1	l2	l3	l4	l5	sw	torque [Nm]	[N]*	[N]#	⚖
GN.71004	GN 7017-4-M6-C-ST	4	M6	2.5	6.9	32	9.5	20	2.5	16	6	1.6	3	10	6
GN.71008	GN 7017-5-M8-C-ST	5	M8	3	9.2	42	12	27	3.1	19.5	8	4.5	3.5	13.5	13
GN.71012	GN 7017-6-M10-C-ST	6	M10	3.5	11.5	51	14	33.5	3.7	24	10	10	4	16	26
GN.71016	GN 7017-8-M12-C-ST	8	M12	5	13.8	54	19	31.8	4.3	32	12	13	4	22	41
GN.71020	GN 7017-10-M16-C-ST	10	M16	5	19.6	77.5	25	50.5	5	33.5	16	42	4	23	104

GN 7017-C-NI

INOX STAINLESS STEEL

Code	Description	d1										Maximum tightening			
		Plunger h11 Hole +0.08+0.03	d2	d3	e	l1	l2	l3	l4	l5	sw	torque [Nm]	[N]*	[N]#	⚖
GN.71003	GN 7017-4-M6-C-NI	4	M6	2.5	6.9	32	9.5	20	2.5	16	6	1.6	3	10	6
GN.71007	GN 7017-5-M8-C-NI	5	M8	3	9.2	42	12	27	3.1	19.5	8	4.5	3.5	13.5	13
GN.71011	GN 7017-6-M10-C-NI	6	M10	3.5	11.5	51	14	33.5	3.7	24	10	10	4	16	26
GN.71015	GN 7017-8-M12-C-NI	8	M12	5	13.8	54	19	31.8	4.3	32	12	13	4	22	41
GN.71019	GN 7017-10-M16-C-NI	10	M16	5	19.6	77.5	25	50.5	5	33.5	16	42	4	23	104

GN 7017-CK-ST

Code	Description	d1										Maximum tightening			
		Plunger h11 Hole +0.08+0.03	d2	d3	e	l1	l2	l3	l4	l5	sw	torque [Nm]	[N]*	[N]#	⚖
GN.71034	GN 7017-4-M6-CK-ST	4	M6	2.5	6.9	32	9.5	20	2.5	16	6	1.6	3	10	8
GN.71038	GN 7017-5-M8-CK-ST	5	M8	3	9.2	42	12	27	3.1	19.5	8	4.5	3.5	13.5	16
GN.71042	GN 7017-6-M10-CK-ST	6	M10	3.5	11.5	51	14	33.5	3.7	24	10	10	4	16	31
GN.71046	GN 7017-8-M12-CK-ST	8	M12	5	13.8	54	19	31.8	4.3	32	12	13	4	22	48
GN.71050	GN 7017-10-M16-CK-ST	10	M16	5	19.6	77.5	25	50.5	5	33.5	16	42	4	23	124

GN 7017-CK-NI

INOX STAINLESS STEEL

Code	Description	d1										Maximum tightening			
		Plunger h11 Hole +0.08+0.03	d2	d3	e	l1	l2	l3	l4	l5	sw	torque [Nm]	[N]*	[N]#	⚖
GN.71033	GN 7017-4-M6-CK-NI	4	M6	2.5	6.9	32	9.5	20	2.5	16	6	1.6	3	10	8
GN.71037	GN 7017-5-M8-CK-NI	5	M8	3	9.2	42	12	27	3.1	19.5	8	4.5	3.5	13.5	16
GN.71041	GN 7017-6-M10-CK-NI	6	M10	3.5	11.5	51	14	33.5	3.7	24	10	10	4	16	31
GN.71045	GN 7017-8-M12-CK-NI	8	M12	5	13.8	54	19	31.8	4.3	32	12	13	4	22	48
GN.71049	GN 7017-10-M16-CK-NI	10	M16	5	19.6	77.5	25	50.5	5	33.5	16	42	4	23	124

* Spring preload

Spring maximum load