



Datenblatt - Fiche technique - Data sheet

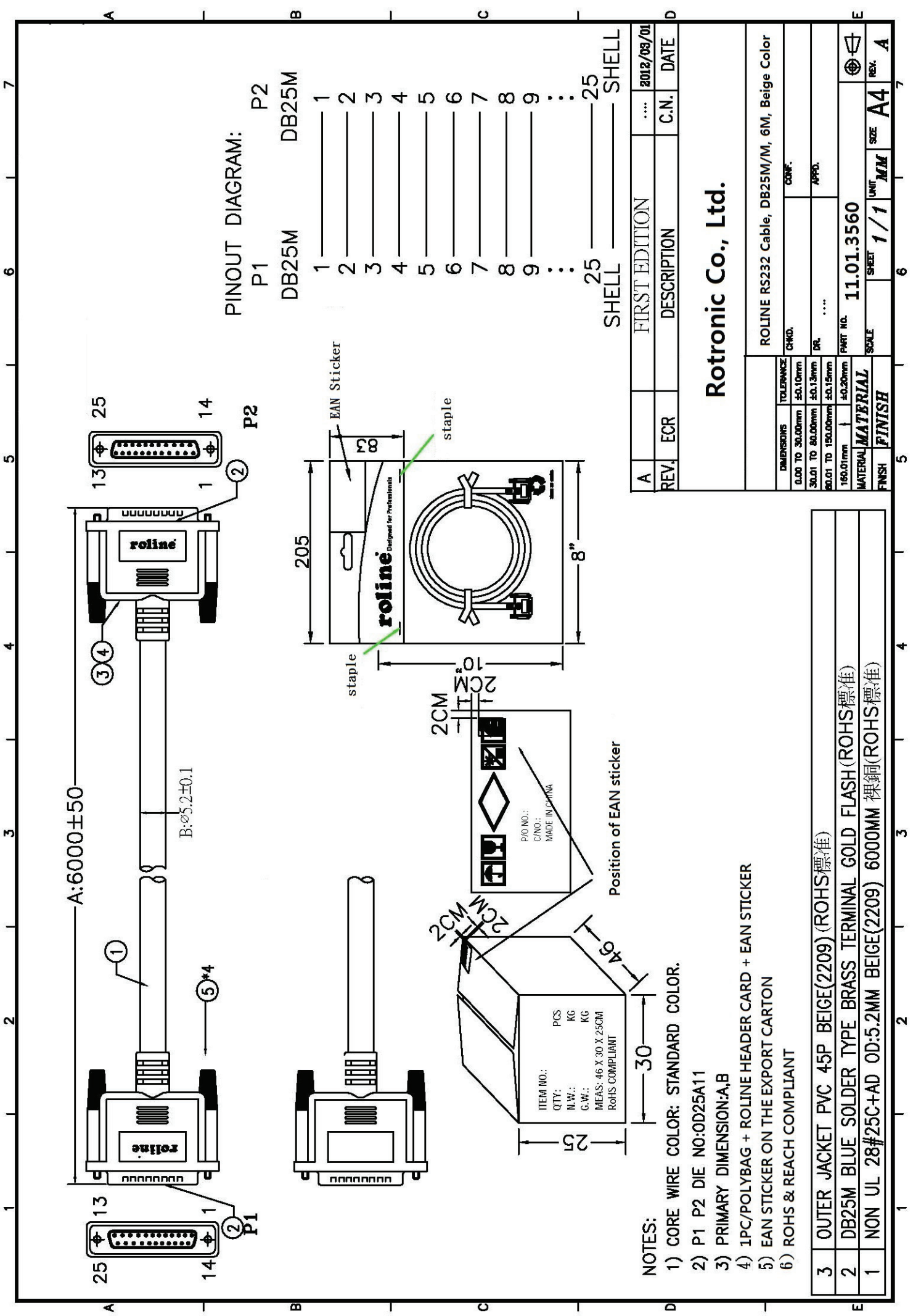
11.01.3560



ROLINE RS232 Kabel ST-ST, 6,0m

ROLINE Câble RS-232 M/M, 6,0m

ROLINE RS232 Cable, M - M, 6 m



PINOUT DIAGRAM:
P1
P2

DB25M DB25M

1	_____	1
2	_____	2
3	_____	3
4	_____	4
5	_____	5
6	_____	6
7	_____	7
8	_____	8
9	_____	9
...	_____	...
25	_____	25
SHELL	_____	SHELL

A	REV.	ECR	FIRST EDITION	...	2012/03/01
			DESCRIPTION	C.N.	DATE

Rotronic Co., Ltd.

DIMENSIONS		TOLERANCE	CONF.
0.00 TO 30.00mm	±0.10mm		
30.01 TO 80.00mm	±0.15mm	DR.	APPD.
80.01 TO 150.00mm	±0.15mm		
150.01mm	±0.20mm		
MATERIAL		PART NO. 11.01.3560	
FINISH	FINISH	SCALE 1/1	SHEET 1/1
		UNIT MM	SIZE A4
			REV. A

- NOTES:
- 1) CORE WIRE COLOR: STANDARD COLOR.
 - 2) P1 P2 DIE NO:0D25A11
 - 3) PRIMARY DIMENSION:A,B
 - 4) 1PC/POLYBAG + ROLINE HEADER CARD + EAN STICKER
 - 5) EAN STICKER ON THE EXPORT CARTON
 - 6) ROHS & REACH COMPLIANT
- | | |
|---|---|
| 3 | OUTER JACKET PVC 45P BEIGE(2209) (ROHS標準) |
| 2 | DB25M BLUE SOLDER TYPE BRASS TERMINAL GOLD FLASH (ROHS標準) |
| 1 | NON UL 28#25C+AD OD:5.2MM BEIGE(2209) 6000MM 裸銅(ROHS標準) |