

Yealink



YEALINK MEETINGBAR

POWERFULLY SIMPLE

For Small and Medium Rooms



YEALINK NETWORK TECHNOLOGY CO., LTD.
sales@yealink.com | www.yealink.com

2022-01-MEETINGBAR-TEAMS-EN-V1.0

www.yealink.com



LEADING VIDEO PLATFORMS WITHIN YOUR CHOICE

Yealink MeetingBar supports diverse video platform experiences. No matter which platform you use, start your meeting right now!



FOR NOW, AND FOR FUTURE

Starting with standalone device mode, later when the company plans to adopt a cloud video platform, Yealink MeetingBar guarantees investment protection by enabling seamless upgrade to a native experience like Teams or Zoom.



MEETINGBAR A20 AND A30

Yealink MeetingBar, the all-in-one video bar is designed for small and medium rooms. Based on the Android 10 OS and supporting cloud video platforms like Microsoft Teams and Zoom, the Yealink MeetingBar integrates the PC, camera and audio components into a simple video bar for a dedicated meeting room.



A20 small rooms (2-6 users)



A30 medium rooms (7-12 users)

SIMPLE TO SET UP A DEDICATED ROOM

Designed with simplicity, Yealink MeetingBar integrates the camera, microphone and speakers into an all-in-one system. No PC or individual components are required, allowing plug-and-play for a dedicated room setup within minutes, greatly reducing the time needed for deployment and management.



— HDMI


— Power


— CAT5e


MEET THE CAMERA TAILORED TO YOUR SPACE



MeetingBar A20 is designed for small rooms. It features a 20-megapixel sensor and 133° field of view, which ensure an ultra-clear and ultra-wide view even in small spaces.


- 


20 MegaPixel sensor
- 

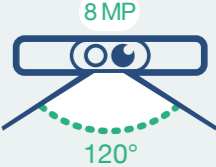
120° field of view
- 

8x digital zoom

MeetingBar A30 dual-camera system is perfect for medium rooms. It features an optical camera with 10x optical zoom and an 8-megapixel digital camera with a 120° field of view, delivering a clear visual experience with depth, which is unable to be achieved with a single camera.

- 

Dual-camera system
- 

10x hybrid HD zoom
- 

8MP sensor, 120° field of view

AI-POWERED VIDEO FOR AUTOMATIC PERFECTION

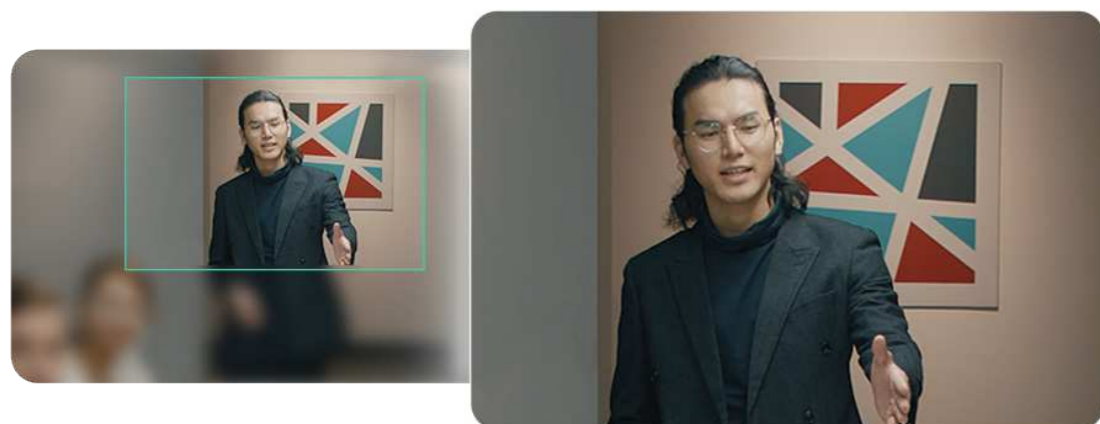
Auto Framing

Auto Framing recognizes the number and the positions of attendees, framing everyone smoothly in the most appropriate view even in small spaces.



Speaker Tracking

Speaker Tracking frames a real-time close-up on the presenter, bringing a vivid face-to-face meeting experience and ensuring attendees are well-engaged.



Picture-in-Picture

Picture-in-picture shows the meeting room and the speaker at the same time, enabling users to keep an eye on who's talking even if the speaker is seated at the far end.



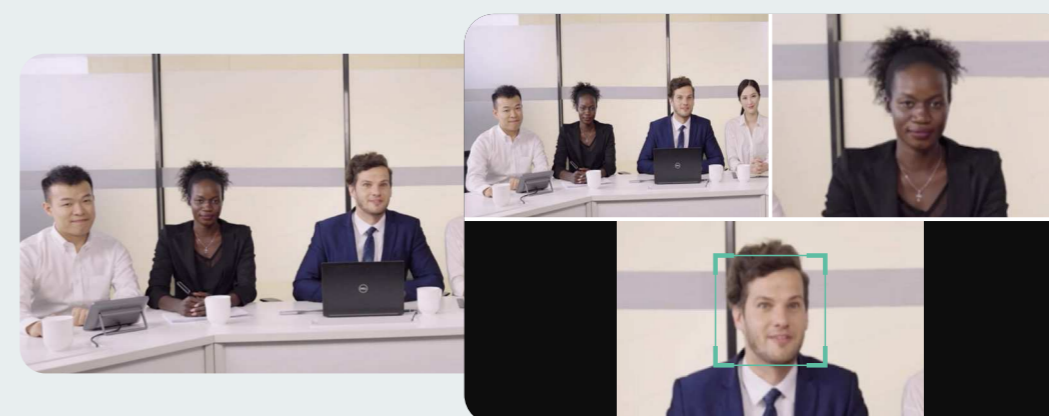
Multi-Focus Framing

It turns equal windows of multiple persons into a recombined meeting view, solving the problem of distractions due to an unclear background.



Smart Gallery (Zoom Only)

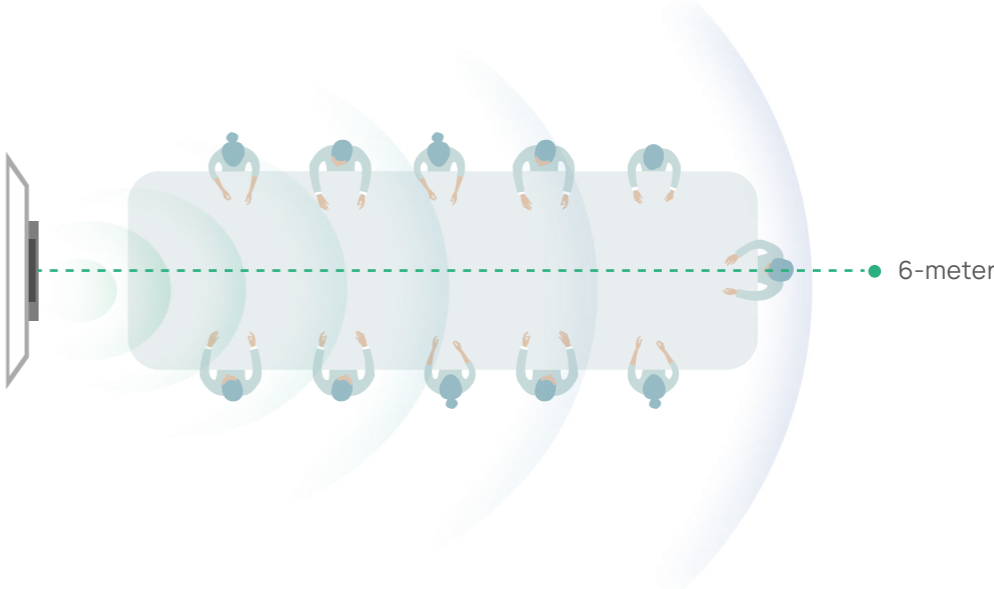
Smart gallery displays three video feeds, one panoramic view, and two individual view of the current and last active speaker. This allows to display the group more clearly to remote attendees.





IMMERSIVE VOICE IN EVERY CORNER

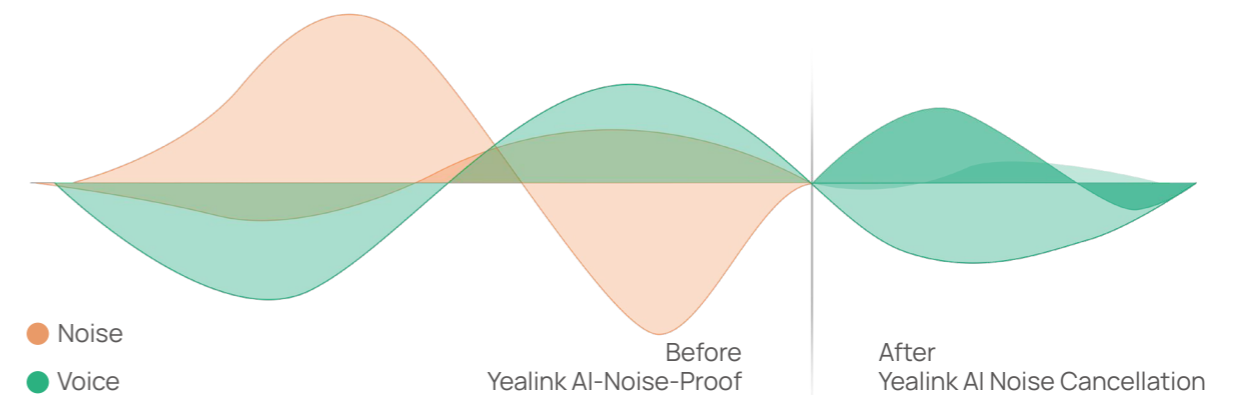
The built-in 8 MEMS microphone arrays and speaker in Yealink MeetingBar, completely cover up to 6-meter medium-sized spaces. As the MeetingBar is equipped with a powerful independent audio processing unit, you can enjoy a worry-free, full-duplex voice experience with superior performance.





AI-BASED VOICE CLEAN UP ALL THE NOISE

Yealink enhanced AI noise cancellation makes the audio experience more brilliant. Leveraging a massive deep-learning sound database to reduce background noises, it is more about intelligent audio analysis than standard filtering of audio frequencies. The distracting keyboard clatter, mouse clicks, footsteps, and other ambient noises are smartly pared back, ensuring that users enjoy crystal-clear audio quality.





ONE MEETINGBAR EFFECTIVE MEETING DONE



CTP18 touch console
Easy meeting control



Human motion sensor
Automatic screen wake-up



Dual-screen support
Video meeting and content sharing



TV mounting
Flexible mounting methods



WPP30
Wireless content sharing
Wireless on device mode



Electric lens cap
Automatically protect room privacy



Whiteboard collaboration



Mobile remote control

ONE-STOP SHOP BLAST MODERN WORKSPACE



Device Mode Solution | VCH51 & WPP30

There are two solutions for device mode connection: wired with the VCH51 and wireless with the WPP30. Both solutions are quite simple: plug-and-play, without any configuration steps.



Room scheduling | RoomPanel

Yealink MeetingBar works seamlessly with Yealink RoomPanel for rooms scheduling, including the at-a-glance room details, up-to-date scheduling status, one tap for reserving meeting spaces, and colored LED bar for indicating room status.



Wireless Microphone Extension | VCM36-W

Yealink VCM36-W wireless microphone works with Yealink MeetingBar as an optional audio component. For medium to large meeting rooms, users can choose the flexible audio solution for a dedicated meeting room based on Android.

MeetingBar Specifications

Items



Yealink A20



Yealink A30

Certification - Small Rooms (Microsoft, Zoom)	●	
Certification - Medium Rooms (Microsoft, Zoom)		●
Operation System	Android 10	Android 10
Sensor	20MP	Dual-camera system with 8MP
Camera	FOV: 120° Zoom: 8X digital	Camera 1 : 8MP / 90° / 3.5X optical PTZ + 3X digital Camera 2 : 8MP / 120° / 4X digital
Maximum Encoding & Decoding capabilities	4K60	4K60
Speaker	Built-in speaker	Built-in speakers (2)
Microphone	Full duplex with built in 8 MEMS microphones	Full duplex with built in 8 MEMS microphones
Camera Privacy Cover	Electric, automatic	Electric, automatic
AI Camera Feature	Auto Framing/Speaker Tracking/Multi-focus Framing/ Picture-in-Picture/Smart Gallery	Auto Framing/Speaker Tracking/ Picture-in-Picture/Smart Gallery

Connections

HDMI	2x HDMI-OUT (CEC supported)	
Wired content sharing	Through Yealink VCH51, easy to extend to the conf. table, HDMI & USB-C interface for different kinds of PC	
Ethernet port	10/100M/1000M	
Motion Sensor	●	
USB Ports	1x USB-A (A20) / 2x USB-A (A30)	
Line-ins	X	3.5mm line-in & out
Wi-Fi/Bluetooth	●	●
Security lock slot	●	●
Reset slot	●	●

Touch Console

Yealink CTP18

Screen	8-inch touchscreen, 1280 x 800
Flexibility	Bracket with adjustable angle: 28° ~ 50°, meets needs for difference perspectives
PoE	●Standard with a PoE adapter
Ultra Sonic Emitter	●
Wall Mounts	Standard with wall mount bracket, set up on a table or mount on a wall