

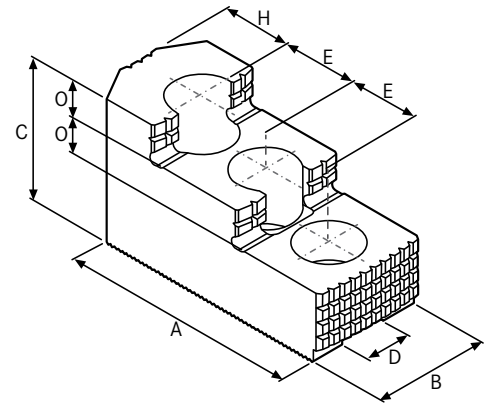
Reversible top jaw, hardened with teeth

ATORN[®]

Delivery

3 pieces in a set

Art. No.	22430 158
Jaws length	79 mm
Jaws width	30 mm
Jaws height	44 mm
Jaw length x jaw width x jaw height	79 x 30 x 44 mm
Groove width	12 mm
Drilling clearance	21 mm
Toothing	1/16 inch x 90°
Suitable for thread	M12
Material of the jaws	Hardened steel



EAN-Code

4050293682915