

D-Sub IDC

Male Connectors w/o strain relief



RoHS
COMPLIANT

SPECIFICATION:

Current rating: 1 A
 Insulation resistance: 1000 MΩ min.
 Contact resistance: 15 mΩ max.
 Dielectric voltage: 500 V AC
 Operation temperature: -25 °C to +85 °C

MATERIAL:

Insulator: PBT black UL94V-0
 Shell: Steel
 Pins: Brass

FINISH:

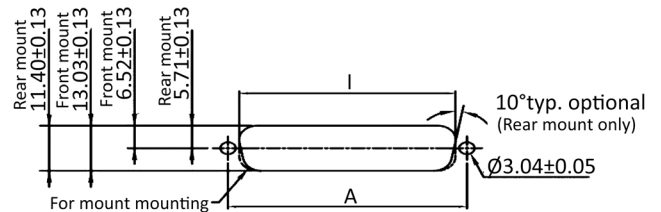
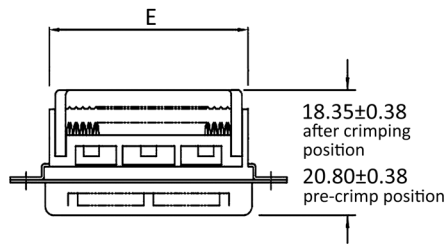
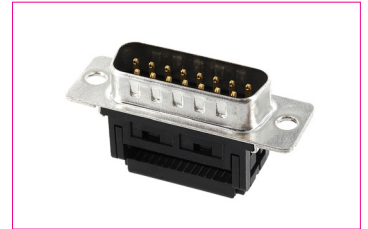
Contacts: Gold plated
 Shell: Nickel or tin plated

HANDLING:

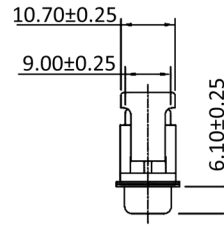
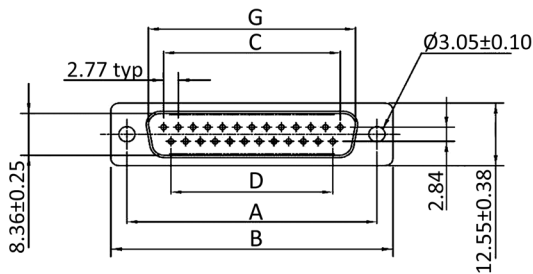
Processing: IDC
 Packing: Tray

TOLERANCE:

.X ± 0.38
 .XX ± 0.25



Recommended panel cutout dimensions



Dimensions

No. of contacts:	A:	B:	C:	D:	E:	G:	I rear:	I front:
9	24.99	30.80	11.08	8.31	16.10	16.92	20.47	22.20
15	33.32	39.10	19.39	16.62	24.00	25.25	28.80	30.52
25	47.04	53.09	33.24	30.47	38.14	38.96	42.52	44.27
37	63.50	69.40	49.86	47.09	54.60	55.45	59.08	60.73

Order-Information

Identifier:	No. of contacts:	Contact Plating:	Shell:		Mounting:	Version:
ST	#	S	K	/	F	OZ
D-Sub Male IDC	9: 9 pin 15: 15 pin 25: 25 pin 37: 37 pin	S: Selective	K: Metal Shell		F: Through Hole	OZ: w/o Strain Relief