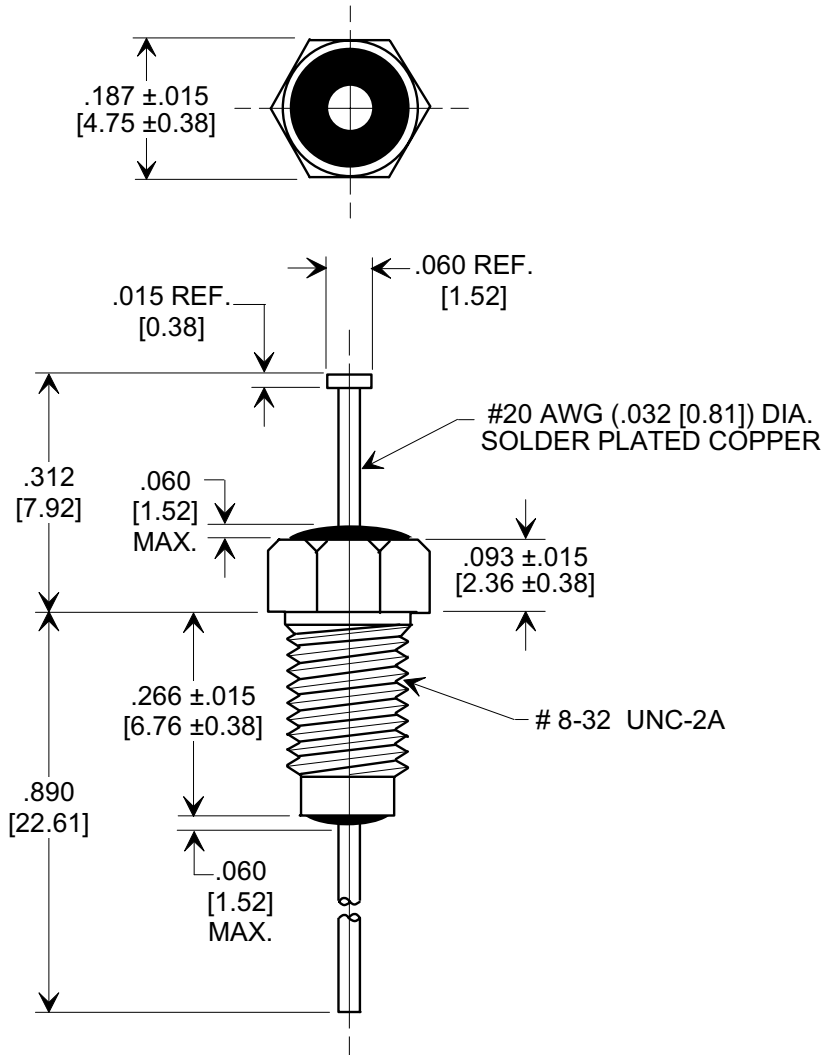
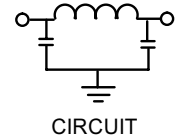
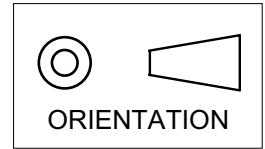


**MARKETING SALES DRAWING**  
**DIMENSIONS IN INCHES - DO NOT SCALE THIS DRAWING**  
**DIMENSIONS IN METRIC - [ ]**

Electrical Testing  
per Tusonix standard  
test plans and Mil-Std-202  
Test Methods.



NOTE:  
SUPPLIED WITH SILVER PLATED  
HEX NUT AND LOCKWASHER.

CAP. (pF)	WORKING VOLTAGE (WVdc)		CURRENT (Idc)	I.R. MIN. @ 100 VDC	D.W.V.	MINIMUM NO LOAD INSERTION LOSS (dB) AT 25°C PER MIL-STD -220			
	85°C	125 °C				10 MHz	100 MHz	1 GHz	10 GHz
1500	200	100	10 A	10 G Ω	400 VDC	5	45	65	70

<b>X-2015 Rev-0</b>	<b>REVISION RECORD</b>							<b>--TOLERANCES--</b> Unless Otherwise Specified	Title <b>BUSHING STYLE EMI FILTER</b>	
	<b>0</b>	Original Release C.O.	<b>1</b>	WAS SK6644-031-S. L.E. 1-13-84	<b>2</b>	MIN CAP PF 1300 ADDED LE 8-16-84	<b>3</b>			
	<b>5</b>	10 GHz WAS 60. E.C. 7-14-92	<b>6</b>	RDN TO COMP FMT & ADDED METRIC. S.M. 01-21-02	<b>7</b>	20020121-1-01 DIM'S REV'D .015 REF. WAS .031 ± .010 & .060 REF. WAS .100 ± .015 & MIN. @ 100 VDC ADDED L.E. 04-16-03	<b>20030414-3-01</b>	Drawn S.M. 01-21-02	Scale 4X	
	Approved T.C. 01-21-02							<b>TUSONIX</b> TUCSON, ARIZONA	<b>A</b>	<b>4201-001</b>