

Clamping sleeves, slotted

Suitable for Parart WB replacement holder

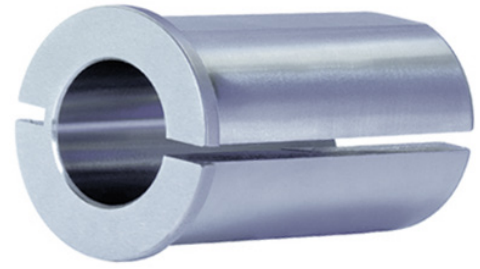


Application:

For clamping cylindrical tools.

Execution:

- External and internal diameter, cylindrical



Art. no.	22277 215
Brand	PARAT TRAUTWEIN
Manufacturer Part Number	401578
Internal diameter	15 mm
For clamping sleeve type	RD 2
Gross Weight	0.670 kg
Product Group	213