

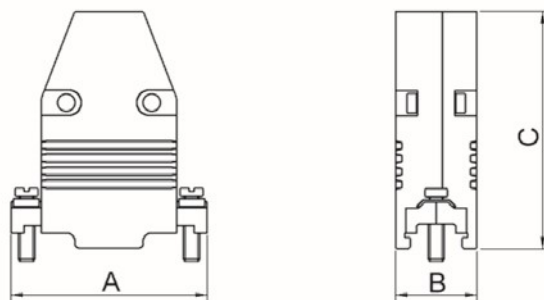
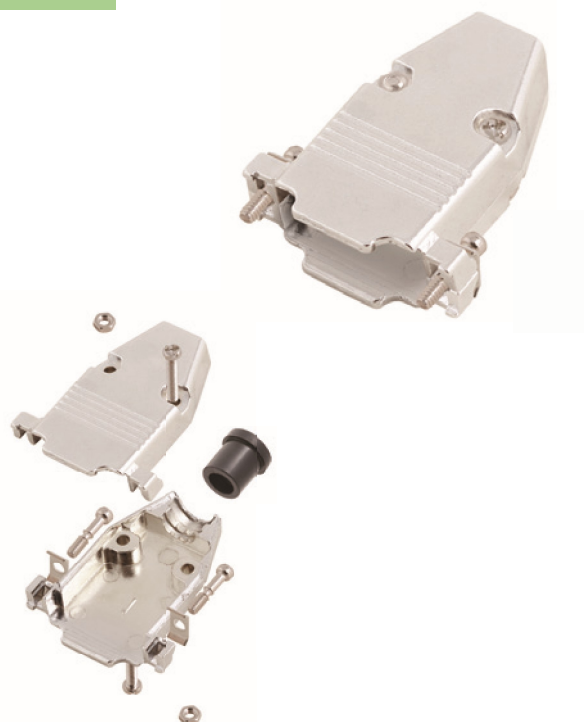
D-Sub Full Metal cover, Top entry, Short Jackscrews + Rubber inserts

TECHNICAL SPECIFICATIONS

Material: Zinc, Nickel Plated
 Operating Temperature: -25°C to +90°C
 Cable Entry: Top Entry
 Cable O.D.:
 Jackscrews: UNC 4-40

Features:

- Available in sizes 9, 15, 25, 37 and 50
- Suitable for any common Sub-D connector
- Re-Openable
- Also available with Long Jackscrews (MEL-RG)



Compression inserts - Inner Diameters:

Size	A	B	C	D	E
9/15	8,00	7,50	7,00	6,00	4,50
25	9,50	8,30	7,90	6,75	5,80
37/50	13,50	13,00	11,00	9,00	8,00

Size CCOV	Dim A	Dim B	Dim C
9-way	31,4	16,2	53,0
15-way	40,2	16,2	48,3
25-way	53,0	16,2	48,3
37-way	69,2	16,2	48,3
50-way	67,0	18,4	48,3

Ordering information:

Size:	P/N - Kitted:	Product Code:
9-way	2360-0107-01	CCOV 9-ME-RG
15-way	2360-0107-02	CCOV15-ME-RG
25-way	2360-0107-03	CCOV25-ME-RG
37-way	2360-0107-04	CCOV37-ME-RG
50-way	2360-0107-05	CCOV50-ME-RG



Encitech AB
 Rörkullsvägen 4
 SE-302 41 HALMSTAD, Sweden

Tel: +46-(0)35-15 13 90
 e-mail: connectors@encitech.com

www.encitech.com