

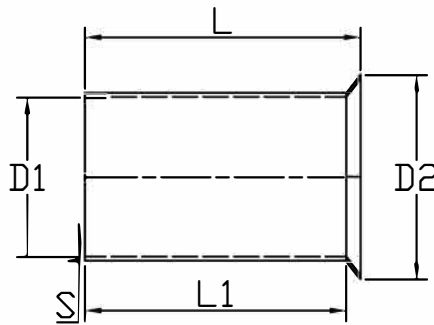
# Non-Insulated Cord-End Sleeve



## Specification

Terminal Material	Tin Plated Copper Tube
Insulation Material	Non-insulated
Max Current	50 A
Wire Range	10 AWG

## Drawing



L	12 mm
D1	3.5 mm
D2	4.7 mm
L1	11 mm
S	0.15 mm

Art. Nr.  
RND 465-01372