

MTJN clamp holder, negative, left

For copy and longitudinal turning with TN indexable insert

ATORN[®]

Application

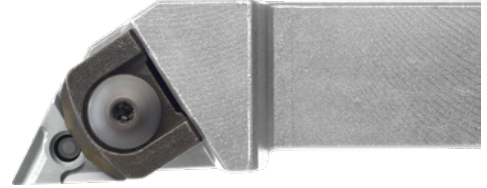
For copy, longitudinal and face turning with TN indexable insert, 60°.

Version

- Precision-manufactured steel support, burnished, hardened, adjustable clamping system, type T, working angle 93°, tip angle 60°, clearance angle 0°

Advantage

- Triple-edge geometry lowers cost per cut
- Negative geometry of the body ensures good stability and force absorption at large cutting depths
- Broad range of use: suitable for both finishing and roughing operations
- Adjustable clamp minimises vibrations and ensures good force transfer



Art. no.	17859 016
ISO name	MTJN R/L 2525 M16
Shaft height	25 mm
Shank width	25 mm
Length	150 mm
Programming size	32 mm
Length of head	32 mm
Suitable for indexable inserts	TN.. 1604..
Tool design	Left
DIN	4983

EAN-Code

4050293320923