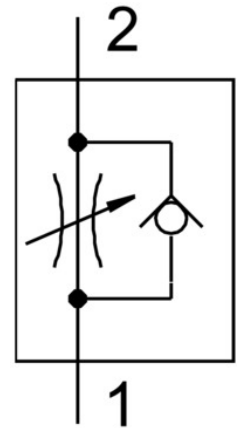


One-way flow control valve GR-QS-6

Part number: 193969

FESTO



Data sheet

Feature	Value
Type code	GR GR
Valve function	Flow control non-return function Flow control non-return function
Pneumatic connection 1	QS-6 QS-6
Pneumatic connection 2	QS-6 QS-6
Adjusting element	Knurled screw Knurled screw
Type of mounting	With accessories With through-hole Optionally: Front panel mounting Front panel mounting With through-hole With accessories Optionally:
Standard nominal flow rate in flow control direction	245 l/min
Standard nominal flow rate in non-return direction	430 l/min
Operating pressure	0.2 bar ... 10 bar
Ambient temperature	-10 °C ... 60 °C
Housing material	PA-reinforced PA-reinforced
Mounting position	Any Any
Symbol	00991453 00991453

Feature	Value
Explosion prevention and protection	Zone 22 (ATEX) Zone 1 (ATEX) Zone 21 (ATEX) Zone 2 (ATEX) Observe the information on the certificate Observe the information on the certificate Zone 1 (ATEX) Zone 2 (ATEX) Zone 21 (ATEX) Zone 22 (ATEX)
Operating medium	Compressed air as per ISO 8573-1:2010 [7:4:4] Compressed air as per ISO 8573-1:2010 [7:4:4]
Information on operating and pilot media	Operation with oil lubrication possible (required for further use) Operation with oil lubrication possible (required for further use)
Temperature of medium	-10 °C ... 60 °C
Product weight	22 g
Note on materials	RoHS-compliant RoHS-compliant
Seals material	NBR NBR
Releasing ring material	POM POM
Material of adjusting screw	High-alloy steel High-alloy steel