

## MTJN clamp holder, negative, left

For copy and longitudinal turning with TN indexable insert

**ATORN**<sup>®</sup>

### Application

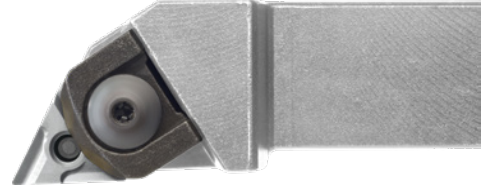
For copy, longitudinal and face turning with TN indexable insert, 60°.

### Version

- Precision-manufactured steel support, burnished, hardened, adjustable clamping system, type T, working angle 93°, tip angle 60°, clearance angle 0°

### Advantage

- Triple-edge geometry lowers cost per cut
- Negative geometry of the body ensures good stability and force absorption at large cutting depths
- Broad range of use: suitable for both finishing and roughing operations
- Adjustable clamp minimises vibrations and ensures good force transfer



<b>Art. no.</b>	<b>17859 011</b>
<b>ISO name</b>	MTJN R/L 2020 K16
<b>Shaft height</b>	20 mm
<b>Shank width</b>	20 mm
<b>Length</b>	125 mm
<b>Programming size</b>	25 mm
<b>Length of head</b>	35 mm
<b>Suitable for indexable inserts</b>	TN.. 1604..
<b>Tool design</b>	Left
<b>DIN</b>	4983

### EAN-Code

4050293320909