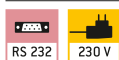


Printers

Important note for printer orders: Please state your balance model when ordering, so that the printer can be preconfigured in the factory to suit your balance.

STANDARD



KERN 911-013

Matrix needle printer

For printing weighing results on normal paper, which is ideal for long-term archiving.

- Interface cable not included with delivery
- Not suitable for KERN DBS, PNS/PNJ, PES/PEJ ranges

Technical data

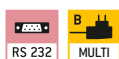
- Needle print
- Speed: 1,8 line/sec
- Max. 40 characters per line
- Paper stripes: 57 mm wide
- Operation via mains adapter 230V/50Hz (standard EU), as standard
- Dimensions housing:
W×D×H 100×180×106 mm

Price printer without interface cable, KERN 911-013

Accessories

- Paper rolls (10 pcs.), KERN 911-013-010
- Universal mains adapter, standard EU/GB/US, KERN ABS-A01

STANDARD



KERN YKN-01

Matrix needle printer

For printing weighing results on normal paper, which is ideal for long-term archiving.

- Dimensions housing:
W×D×H 158×106×40 mm
- Interface cable not included with delivery

Technical data

- Needle print
- Speed: 1 line/sec
- Max. 16 characters per line
- Paper stripes: 44 mm wide
- Operation via mains adapter 230V/50Hz, as standard

Price printer without interface cable, KERN YKN-01

Accessories

- Paper rolls (5 pcs.), KERN YKN-A01

STANDARD



KERN YKB-01N

Thermal printer

For printing weighing results, recipes, quantities etc. or for GLP record keeping of balance adjustment with date and time print. Language versions: DE, GB, FR.

- Dimensions housing:
W×D×H 165×140×50 mm
- Interface cable not included with delivery

Technical data

- Thermal print
- Speed: 0,75 lines/sec
- Max. 40 characters per line
- Paper stripes: 112 mm wide
- Operation via mains adapter 230V/50Hz, Standard EURO/UK/US, as standard

Price printer without interface cable, KERN YKB-01N

Accessories

- Paper rolls (10 pcs.), KERN YKB-A10

Individual header data:

For printers **KERN 911-013, YKN-01, YKB-01N, YKE-01 and YKC-01 (in combination with YKI-02)** the free software **KERN SHM-01** can be used to print 4 header lines on the printout (see marking on balance). Compatible models: KERN 440, DE, FCB, FKB-A, PCB, PCD.

Printers

STANDARD



KERN YKS-01

Thermal statistics printer

For printing weighing results, recipes etc. or for GLP record keeping of weighing data with date and time print (not in combination with KERN counting scales or KERN moisture analysers).

Numerator; with statistical functions such as count and total of all measurements, minimum and maximum values of the main unit, range (Max-Min), average value, standard deviation, available units: mg, g, kg, pcs. Language versions: DE, GB, FR.

- Max. 40 characters per line
- Paper stripes: 112 mm wide
- Operation via mains adapter 230V/50Hz, Standard EURO/UK/US, as standard
- Dimensions housing: W×D×H 165×140×50 mm
- Interface cable not included with delivery
- Not suitable for KERN PFB ranges

Price printer without interface cable, KERN YKS-01

Technical data

- Thermal print
- Speed: 0,75 lines/sec

Accessories

Paper rolls (10 pcs.), KERN YKB-A10

STANDARD



KERN YKE-01

Thermal label printer

Affordable universal label printer to print out weighing results on thermal labels, compatible with all KERN 2018 balances. ASCII-capable.

- Interface cable not included with delivery
- Not suitable for KERN CPB, RPB, CFS, CKE, IFS, CDS, CCS, BFS, KFS-TM ranges

Price printer without interface cable, KERN YKE-01

Technical data

- Thermal print
- Speed: 22 mm/s
- Max. 82 characters per line
- Paper stripes: 112 mm wide
- Operation via mains adapter 230V/50Hz, Standard EURO/UK/US, as standard
- Dimensions housing: W×D×H 150×155×65 mm

Accessories

- Paper roll (1 pc.), Dimensions labels: W×D 73×61 mm, 100 labels: KERN YKE-A02 105×48 mm, 45 labels: KERN YKE-A03

Interface cable for RS-232

For direct connection to a printer or PC, cable length approx. 1.5 m. The interface parameters can be set using the balance keypad.

The interface cable is **free of charge** if you purchase balance, printer or Ethernet-/WLAN-/Bluetooth adapter together. **Note**

Printer, ...	PC, YKI-01/-02/-03	911-013, YKE-01, YKB-01N, YKN-01	YKS-01
Balance	KERN	KERN	KERN
440, 572, 573, ALJ-AM, ALS-A, ALT-B, CDS, CKE, DE-D, DS, EMB-V, FCB, FKA, FKB, FKC, FKB-A, FKT, FKTF, IKT, KB, PCB, PCD, PKS, PKT, PLJ-A, PLJ-F, PLS-A, PLS-F, PLE, PLT, KDP		572-926	
EOC, IOC, BID		EOC-A12	
BFA, BFB, BFN, GAB-N, GAB-P, GAT, IFB, KFB-TAM, KFN-TAM, NBB, NFB, NFN, PFB, SFB, UFA, UFB, UFC, UFN		CFS-A01	
ABT-NM, PBJ, PBS		770-926	
HFT		KFF-A01	
EG-N, EW-N		474-926	
ADB, AEJ-CM, AEJ-NM, AES-C, AES-N, AET, CCP, CCT (for connecting the peripheral device to the PLJ-C reference balance), ILJ-C, ILS-C, ILT, PET, PLJ-C, PLJ-G, PNJ, PNS, PEJ, PES (printer/PC connection bidirectional)		MLB-A05	
DAB, KFS-T, KFS-T, MLS-D		MLB-A05	-
DLB, DLT; DBS (not suitable in combination with KERN 911-013)		572-926	-
BFS, CCS, CFS, CPB, EWJ, KFG-TM, KFS-TM, KFT-TM, IFG, IFS (from year of production 2015), IFT, PFB, PFB-M, RPB		CFS-A01	-
YKU-01	CFS-A01	-	-
PEJ, PES (printer connection unidirectional)	-	474-926	
ABJ-NM, ABS-N		ACS-A01	
BAN, BKN, BXS, IXS, KXS-TM, SXS		KXS-A04 (Factory Option)	
CCT (for connecting the peripheral device to the bulk scale ILT)		KET-A09	

KERN SCD-4.0

BalanceConnection Software –

Flexible recording or transfer of measurements, particularly to Microsoft® Excel or Access

Features

- For operating systems Windows XP, Vista, 7, 8, 8.1, 10
- Supports balances measuring devices with RS 232, RS 485, Bluetooth, LAN or WLAN network (TCP/UDP/IP)
- Highly flexible formatting of the output (any order, formatting and rounding), particularly recording of date and time for every value transferred, if required
- Any number of devices/interfaces can be connected, as well as simultaneous and synchronised recording of several balances
- Key-activated or time-controlled interrogation of measurements or trigger of device functions, also for continuous recording
- The interface protocols for KERN balances are already predefined (standard configuration)

- Compatible interface cable included when you order a KERN balance at the same time
- Many different transfer and recording options:
 - Microsoft® Excel/Access/Word in the foreground or background
 - Other Windows applications (through key simulation), e.g. shipping software or ERP system (SAP, Sage, etc.)
 - File recording (e.g. as text or CSV file)
 - Print out on text or label printer
 - ODBC/SQL databases such as SQL Server or MySQL
 - Transfer to HTTP Webservices/Web forms
 - Screen output such as large display, line chart (drying curve for moisture analyzer), histogram, etc.

- Enables the connection of medical balances to practice EDP systems using the device data transfer protocol (GDT) and also the HL7 protocol

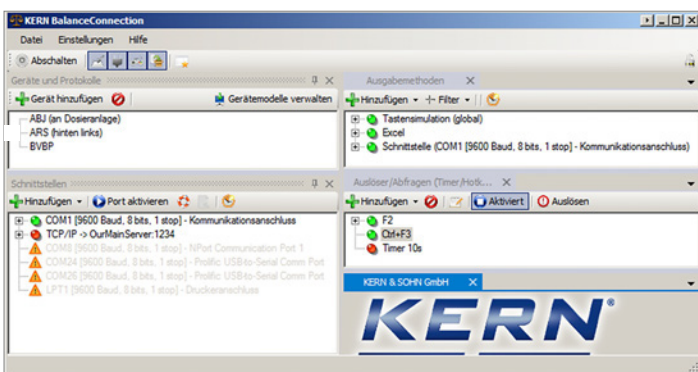
Benefits

- Typing errors during e.g. manual transfer are avoided
- Automatic recording, e.g. for long-term tests
- GLP-compliant lab software

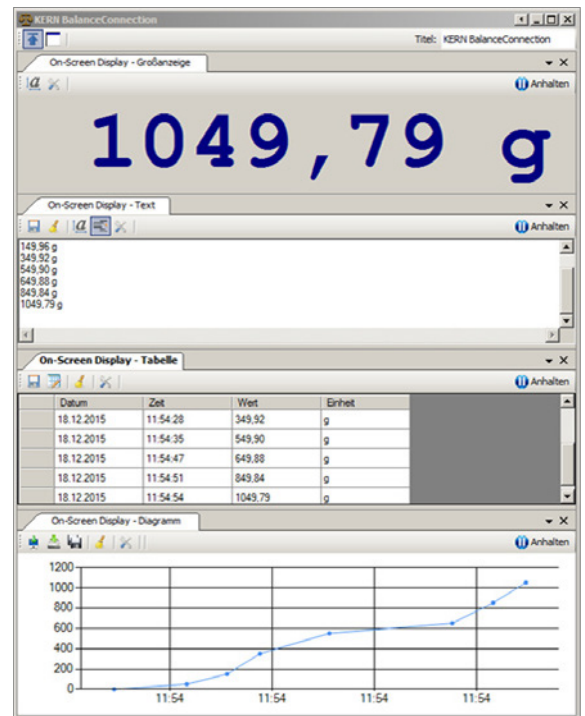
KERN SCD-4.0

Soll	Ist	Datum / Uhrzeit	Differenz	Abweichung	Gesamt
200,47 g	200,47 g	07.05.2012 12:15	0,47 g	0,23%	200,47 g
400 g	411,21 g	07.05.2012 12:15	11,21 g	2,80%	611,68 g
1000 g	1.002,39 g	07.05.2012 12:15	2,39 g	0,24%	1.614,07 g
5,000 g	4,9993 g	07.05.2012 12:16	-0,0007 g	-0,01%	1.619,0693 g
1,000 g	0,9984 g	07.05.2012 12:16	-0,0016 g	-0,16%	1.620,0677 g

1 Easy transfer and editing of measuring results e.g. in Microsoft® Excel



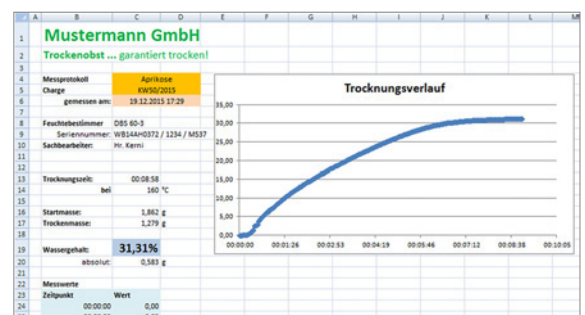
2 Full overview of devices, outputs, queries, interfaces, etc. shown on the output window immediately



3 Different on-screen displays with export function

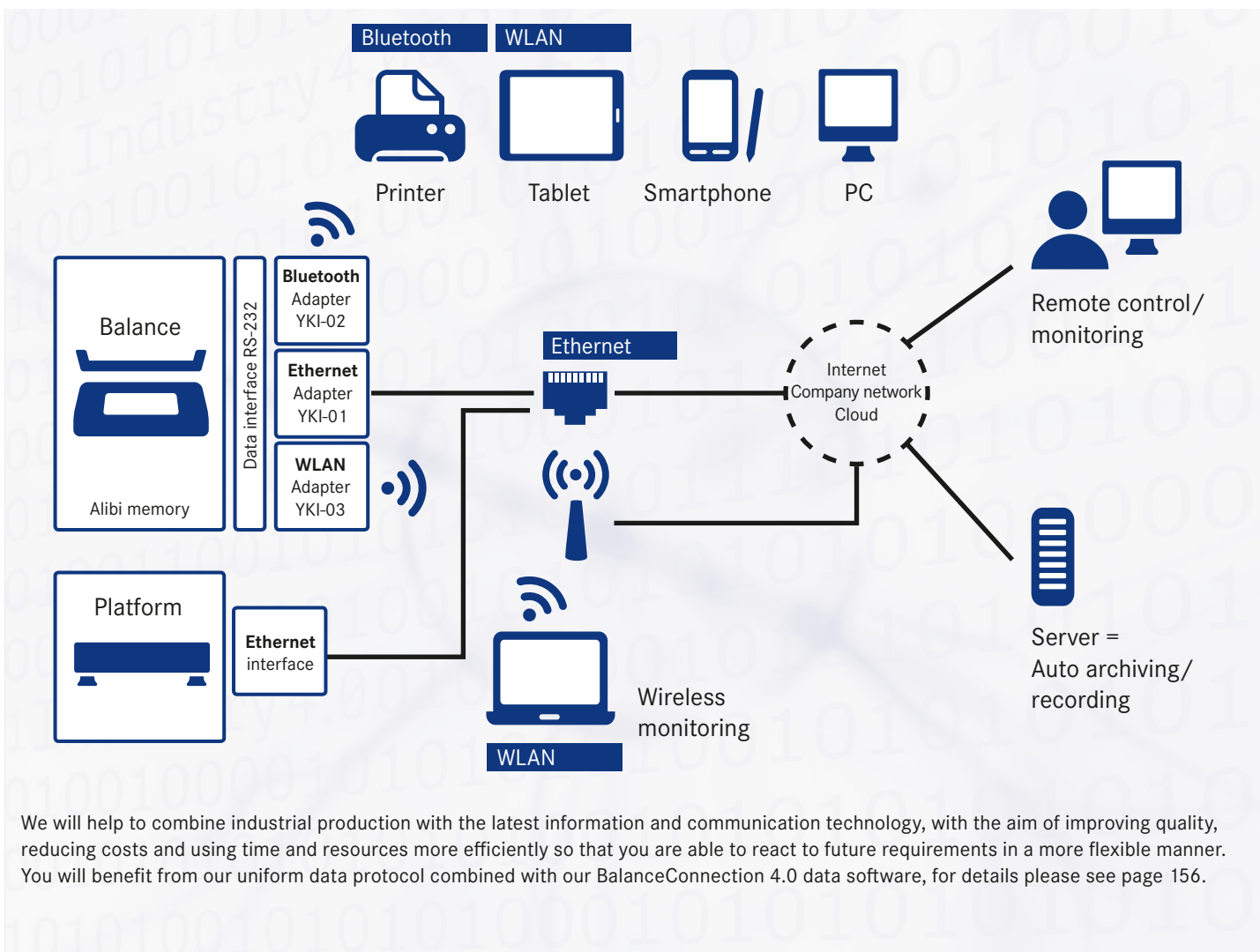
Note

Do you have questions about our software? The team from our Industry 4.0 centre of expertise will be happy to help.
E-Mail: ITsupport@kern-sohn.com



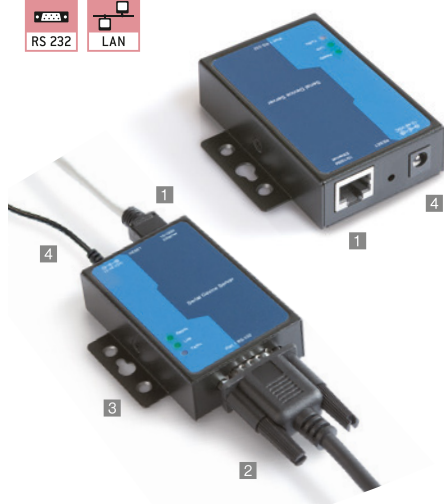
4 Measurement report with line chart showing a moisture analysis

With products from KERN you are ready to face the challenges of Industry 4.0



We will help to combine industrial production with the latest information and communication technology, with the aim of improving quality, reducing costs and using time and resources more efficiently so that you are able to react to future requirements in a more flexible manner. You will benefit from our uniform data protocol combined with our BalanceConnection 4.0 data software, for details please see page 156.

STANDARD



▲ **Note:** To connect to your network, you will need information from your network administrator. We recommend discussing connecting your device into your network with the administrator before you place your order.

If you order a KERN balance at the same time, then the interface cable is **free of charge** (please specify balance model).

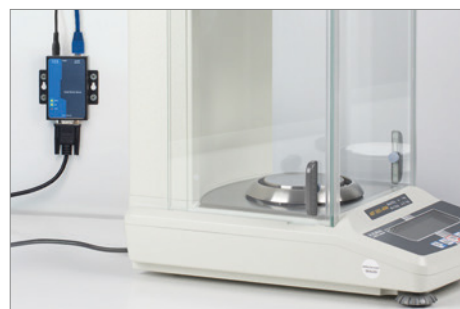
KERN YKI-01

RS-232 / Ethernet adapter

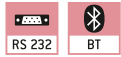
Adapter to connect balances, force measuring devices etc. with an RS-232 interface 2 to an IP-based Ethernet network 1. The adapter allows direct integration of measuring devices into most company networks, with automatic configuration using DHCP or statistical IP allocation. You can access the current measuring data at any time from within the whole network, without having to use additional cables. The adapter supports a wide range of configurational options using the enclosed administration software or by the web interface. The driver delivered with the goods allows you to access the measuring device with existing, non-network-compatible applications using a virtual COM port. Compatible with **KERN BalanceConnection software**. DIN track mount 3 or free-standing.

Scope of delivery: RS-232 Ethernet adapter with 1x Port RS-232 1, mains adapter 4, CD (driver, software, operating instructions), adhesive feet, (interface cable see page 155).

KERN YKI-01



STANDARD



▲ **Note:** To connect to your network, you will need information from your network administrator. We recommend discussing connecting your device into your network with the administrator before you place your order. If you order a KERN balance at the same time, then the interface cable is **free of charge** (please specify balance model). ▼

KERN YKI-02

RS-232/Bluetooth-Adapter

adapter for the wireless connection of balances, force measuring devices etc. with an RS-232 interface to Bluetooth devices, such as Bluetooth printers (e.g. KERN YKC-01), tablets, laptops, Smartphones etc. In this way, where there is a physical separation or a large distance between the devices, the weighing data from one or several balances can be easily sent without cable and printed on a Bluetooth printer or transferred to a Bluetooth device (you would need the relevant software on the Bluetooth device, not included with the delivery). The compact adapter with its attractive design can usually be connected directly to the balance **1**, e.g. an additional interface cable would not be necessary.

Bluetooth adapter will be powered by the balance (if compatible) or with the mains adapter which is supplied as standard **2**. Range up to 100 m outside, depending on obstacles, such as, walls, the sensitivity and type of antenna of the receiver. Intersections of sending and receiving lines using the DCE/DTE switch **3**. Compatible with **KERN BalanceConnection software**.

Scope of delivery: RS-232/Bluetooth adapter, mains adapter (EU/UK/USA/AUS/CH) **2**, USB-A to Mini-USB-B cable **4**, gender changer **5**, driver CD, (interface cable see page 155).

KERN YKI-02

STANDARD



KERN YKI-03

RS-232/WLAN-Adapter

High-quality adapter for the wireless connection of balances, force measuring devices etc. with RS-232 interface to WLAN-enabled devices, such as tablets, laptops, Smartphones etc. In this way, where there is a physical separation or a large distance between the devices, the weighing data from one or several balances can be easily transferred without cable to a WLAN device or a network (relevant software on the WLAN device needed, not included in delivery). The adapter allows direct integration of measurement devices into most company networks, with automatic configuration using DHCP or statistical IP allocation. You can access the current measuring data at any time from within the whole network, without having to use additional cables. The adapter supports a wide range of configurational options using the enclosed administration software or by the web interface. The driver delivered with the goods allows you to access the measurement device with existing, non-network-compatible applications using a virtual COM port.

Compatible with **KERN BalanceConnection Software**. The adapter also has an Ethernet interface for a wired connection to an IP-based Ethernet network **1**. Thanks to the screw terminals **2**, the power connection can be implemented individually using individual wires or using the robust, screw-in power connector **3**. Large input voltage range from 12 V–48 V. Suitable for wall mounting and DIN track mount **4** or free-standing.

Scope of delivery: RS-232/WLAN adapter, mains adapter, network cable (1 m), driver CD, (interface cable see page 155).

KERN YKI-03



KERN YKD-A02

Large display
with superior display size, digit height 3" (76 mm). Luminescent, red LED display for easy reading of weight, even from a distance or under poor lighting conditions. 6 segments, mains connection as standard (230 V, EU/GB), connection using RS-232 data interface, dimensions W×D×H 541×55×180 mm.

Suitable for series IFB, BFB, NFB, UFA, UFB,
KERN YKD-A02



KERN CFS-A03

Signal lamp
Signal lamp for visual support of weighing with tolerance range. Three-colour LED, red, green, yellow. Power supply via balance using RS-232. Total dimensions W×D×H 100×180×300 mm

Suitable for series BFB, BFN, BID, CPB-N, GAB-N, GAB-P, IFB, IOC, KFB-TM, KFN-TM, KIB-TM, NBB, NFB, NFN, SFB, UFA, UFB, UFC, UFN,

KERN CFS-A03



KERN CFS-A04

2nd RS-232 data interface
separate Y cable, e.g. for simultaneous connection of a printer, signal lamp etc. Suitable for series BAN, BFB, CFS, CPB-N, GAB-N, GAB-P, IFB, KFB-TM, NFB, NFN, UFN, UFA, UFB, SFB,

KERN CFS-A04



KERN AFH 12

RS-232/USB adapter
to connect peripheral devices with USB connection, fits on all balances and measuring instruments with RS-232 port.

Scope of delivery:
Converter cable, CD with driver,

KERN AFH 12



KERN AFH 14

2 × RS-232/USB adapter
to connect peripheral devices with USB connection, fits on all balances and measuring instruments with RS-232 port.

Scope of delivery:
Converter cable, CD with driver,

KERN AFH 14



KERN YKA-02

Power supply adapter set
from standard EU to GB/US/AUS/CH etc. Four pieces. Ideal for devices with Class II protection (not earthed). Ideal for Euro moulded plug,

KERN YKA-02



KERN YKP-01

Stand (tripodal)
stable and robust, to elevate display device, stainless steel, height-adjustable, large three-legged adjustable foot, height of stand approx. 750–1000 mm, Factory Option.

Suitable for series BFA, BBB, BFN, BBN, KEN-TM, NFN, SFB (from weighing plate size W×D 500×400 mm), UFN,

KERN YKP-01



KERN YKP-02

Stand (tripodal)
stable and robust, to elevate display device, stainless steel, height-adjustable, large three-legged adjustable foot, height of stand approx. 750–1000 mm, Factory Option.

Suitable for series BFB, BXS, BFS, BFA, BBB, BBN, BKN, IFS, IFB, KFE-TM, KXG-TM, KXS-TM, KEN-TM, NFB, NBB, SFE, UFA, UFB, UFC,

KERN YKP-02



KERN RFS-A02

Tare pan

Made of stainless steel, which makes cleaning easy and hygienic. Ideal for weighing loose screws, small parts, fruit, vegetables, cheese, etc.

- W×D×H 370×240×20 mm
- Net weight approx. 524 g

KERN RFS-A02



KERN CH-A01N

Tare pan with pan beam

Made of stainless steel. Ideal for weighing loose small parts, fruit, vegetables etc. Max. load 30 kg. Removable tare pan which makes cleaning easy and hygienic. Suitable for models KERN CH 15K20, HCB 20K10, HCN 20K50IP, HDB-N.

- Dimensions: Tare pan ϕ /H 273×40 mm
- Pan beam: W×D×H 320×273×300 mm
- Total dimensions: W×D×H 320×273×340 mm
- Total net weight approx. 1000 g

KERN CH-A01N



KERN ABS-A08

Protective dust cover

For protection from dust and light. Suitable for all KERN analytical balances and precision balances with glass draught shield.

KERN ABS-A08



KERN YDB-03

Universal density set

Universal density set for precise and convenient density determination of liquids and solids $\leq/\geq 1$. Suitable for all KERN analytical balances.

Scope of delivery: Beaker (ϕ ×H 84×113 mm), thermometer, sample holder, adapter, equalising weights, volume plummet (stainless steel, 20 g), universal submersible basket for solid bodies which float and sink. The wire of the submersible basket has a diameter of 0.5 mm and therefore complies with the requirements

of DIN EN ISO 1183-1 (test methods for the determination of density of non-foamed plastics)

KERN YDB-03

Optional:


Density determination of the volume plummet, DAkS calibration certificate with all data relating to the density and volume, KERN 962-335V



KERN YBI-01A

Ioniser to neutralise electrostatic charge

Goods to be weighed which are non-conductive, such as plastic, china, glass, etc often carry electrostatic charge. The electromagnetic field which then occurs between the goods to be weighed and the balance can cause the weighing result to be distorted by up to a gramme.

Therefore, when weighing in milligrammes or even smaller increments, we recommend neutralising the electrostatic charge with the KERN AC-Korona discharge ioniser. With feet  supplied with the ioniser, it can be positioned conveniently next to the balance or

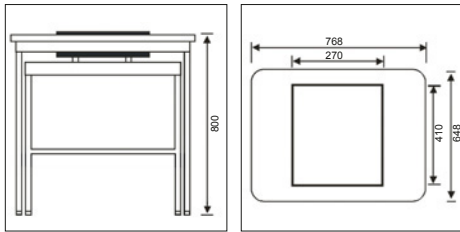
you can manually direct it from all sides onto a particular item to be weighed.

- Discharge of ozone 0,05 ppm/h
- Total dimensions W×D×H 115×100×60 mm (Adjustable foot retracted), 115×110×80 mm (Adjustable foot folded out)
- Net weight approx. 0,31 kg
- Mains connection 100-240V, 50/60 Hz, AC power supply, DC 12V, 500 mA, output,

KERN YBI-01A



STANDARD



KERN YPS-03

Weighing table

The KERN YPS-03 weighing table has been constructed to absorb vibrations and oscillations, which would otherwise distort the weighing result.

The YPS-03 weighing table consists of:

- a heavy, polished granite slab (34 kg) and is positioned on absorbing rubber components and is used as a surface on which to stand the analytical balance
- a work table, the work surface of which surrounds the slab and offers many storage options. The sturdy powder-coated steel frame has four height-adjustable feet, which can be used to accurately level the weighing table if the floor is at all uneven
- You can work in an ergonomic way at the weighing table whether you are in a standing or seated position. The inlet on the front of the table offers enough space for you to sit down and operate the scale without touching the weighing table.

- All surfaces are easy and hygienic to clean
- Suitable for all KERN analytical balances with total dimensions $\leq W \times D$ 270×410 mm
- Total dimensions $W \times D \times H$ 768×648×800 mm (Height adjustable)
- Dimensions granite slab, $W \times D \times H$ 270×410×115 mm
- Net weight approx. 62 kg

Ready for shipping in 2 working days. Dispatch complete on pallet. Please ask for dimensions, gross weight, shipping costs,

KERN YPS-03

STANDARD



KERN YRO-01 / YRO-02 / YRO-03

Roller conveyor

Through the **smooth-running KERN roller conveyor attachments**, KERN YRO, you can convert your platform scale into a **robust measuring system** for rapid and flexible weight determination in conveyor applications

Especially **suitable for use in production and dispatch lines** where time means money. The goods or packages can either be weighed as they pass over the balance or, at fixed stations, heavy goods can easily be pushed onto the scale thanks to the roller conveyor and moved onto the connected roller conveyor

- **1** Simply connect the roller conveyor attachment to a platform (e.g. KERN IFB, IFG, IFS, IXS, KFP, KXP, SXS) – done!
- **Robust aluminium profile frame.** The modular design means that you can **easily disassemble it for cleaning** or to replace individual components
- **Smooth-running, hot-dip galvanised steel rollers with ball bearings**
- **Conductive rollers** (suitable for use in hazardous areas)
- Suitable for use in **dry environments**

- Roller distance approx. 30 mm
- Direction of movement is lengthways
- Total dimensions: $W \times D \times H$
YRO-01: 405×305×130 mm, suitable for platforms with weighing plate sizes $W \times D$ 400×300 mm
YRO-02: 505×405×130 mm, suitable for platforms with weighing plate sizes $W \times D$ 500×400 mm
YRO-03: 655×505×130 mm, suitable for platforms with weighing plate sizes $W \times D$ 650×500 mm
- Total net weight approx. YRO-01: 6 kg, YRO-02: 8 kg, YRO-03: 12 kg
- Scope of delivery: 1 roller conveyor attachment (without scale)

KERN YRO-01

KERN YRO-02

KERN YRO-03

KERN Pictograms

 Internal adjusting: Quick setting up of the balance's accuracy with internal adjusting weight (motordriven)	 GLP/ISO log: The balance displays serial number, user ID, weight, date and time, regardless of a printer connection	 Suspended weighing: Load support with hook on the underside of the balance
 Adjusting program CAL: For quick setting up of the balance's accuracy. External adjusting weight required	 GLP/ISO log: With weight, date and time. Only with KERN printers	 Battery operation: Ready for battery operation. The battery type is specified for each device
 Memory: Balance memory capacity, e.g. for article data, weighing data, tare weights, PLU etc.	 Piece counting: Reference quantities selectable. Display can be switched from piece to weight	 Rechargeable battery pack: Rechargeable set
 Alibi memory: Secure, electronic archiving of weighing results, complying with the 2014/31/EU standard.	 Recipe level A: The weights of the recipe ingredients can be added together and the total weight of the recipe can be printed out	 Universal mains adapter: with universal input and optional input socket adapters for A) EU, GB B) EU, GB, CH, USA C) EU, GB, CH, USA, AUS
 Data interface RS-232: To connect the balance to a printer, PC or network	 Recipe level B: Internal memory for complete recipes with name and target value of the recipe ingredients. User guidance through display	 Mains adapter: 230V/50Hz in standard version for EU. On request GB, USA or AUS version available
 RS-485 data interface: To connect the balance to a printer, PC or other peripherals. Suitable for data transfer over large distances. Network in bus topology is possible	 Recipe level C: Internal memory for complete recipes with name and target value of the recipe ingredients. User guidance through display, multiplier function, adjustment of recipe when dosages are exceeded or barcode recognition	 Power supply: Integrated in balance. 230V/50Hz standard EU. More standards e.g. GB, USA or AUS on request
 USB data interface: To connect the balance to a printer, PC or other peripherals	 Totalising level A: The weights of similar items can be added together and the total can be printed out	 Weighing principle: Strain gauges Electrical resistor on an elastic deforming body
 Bluetooth* data interface: To transfer data from the balance to a printer, PC or other peripherals	 Percentage determination: Determining the deviation in % from the target value (100 %)	 Weighing principle: Tuning fork A resonating body is electromagnetically excited, causing it to oscillate
 WLAN data interface: To transfer data from the balance to a printer, PC or other peripherals	 Weighing units: Can be switched to e.g. nonmetric units at the touch of a key. See balance model. Please refer to KERN's website for more details	 Weighing principle: Electromagnetic force compensation Coil inside a permanent magnet. For the most accurate weighings
 Control outputs (optocoupler, digital I/O): To connect relays, signal lamps, valves, etc.	 Weighing with tolerance range: (Check-weighing) Upper and lower limiting can be programmed individually, e.g. for sorting and dosing. The process is supported by an audible or visual signal, see the relevant model	 Weighing principle: Single cell technology Advanced version of the force compensation principle with the highest level of precision
 Interface for second balance: For direct connection of a second balance	 Hold function: (Animal weighing program) When the weighing conditions are unstable, a stable weight is calculated as an average value	 Verification possible: The time required for verification is specified in the pictogram +3 DAYS
 Network interface: For connecting the scale to an Ethernet network	 Protection against dust and water splashes IPxx: The type of protection is shown in the pictogram.	 DAkkS calibration possible (DKD): The time required for DAkkS calibration is shown in days in the pictogram +3 DAYS
 Wireless data transfer: between the weighing unit and the evaluation unit using an integrated radio module	 Stainless steel: The balance is protected against corrosion	 Package shipment: The time required for internal shipping preparations is shown in days in the pictogram 1 DAY
 KERN Communication Protocol (KCP): It is a standardized interface command set for KERN balances and other instruments, which allows retrieving and controlling all relevant parameters and functions of the device. KERN devices featuring KCP are thus easily integrated with computers, industrial controllers and other digital systems		 Pallet shipment: The time required for internal shipping preparations is shown in days in the pictogram 2 DAYS

KERN – Precision is our business

To ensure the high precision of your balance KERN offers you the the appropriate test weight in the international OIML error limit classes E1-M3 from 1 mg - 2500 kg. In combination with a DAkkS calibration certificate the best pre-requisite for proper balance calibration.

The KERN DAkkS calibration laboratory today is one of the most modern and best-equipped DAkkS calibration laboratories for balances, test weights and force-measurement in Europe.

Thanks to the high level of automation, we can carry out DAkkS calibration of balances, test weights and force-measuring devices 24 hours a day, 7 days a week.

Range of services:

- DAkkS calibration of balances with a maximum load of up to 50 t
- DAkkS calibration of weights in the range of 1 mg – 2500 kg
- Volume determination and measuring of magnetic susceptibility (magnetic characteristics) for test weights
- Database supported management of checking equipment and reminder service
- Calibration of force-measuring devices
- DAkkS calibration certificates in the following languages DE, GB, FR, IT, ES, NL, PL
- Conformity evaluation and reverification of balances and test weights

Your KERN specialist dealer: