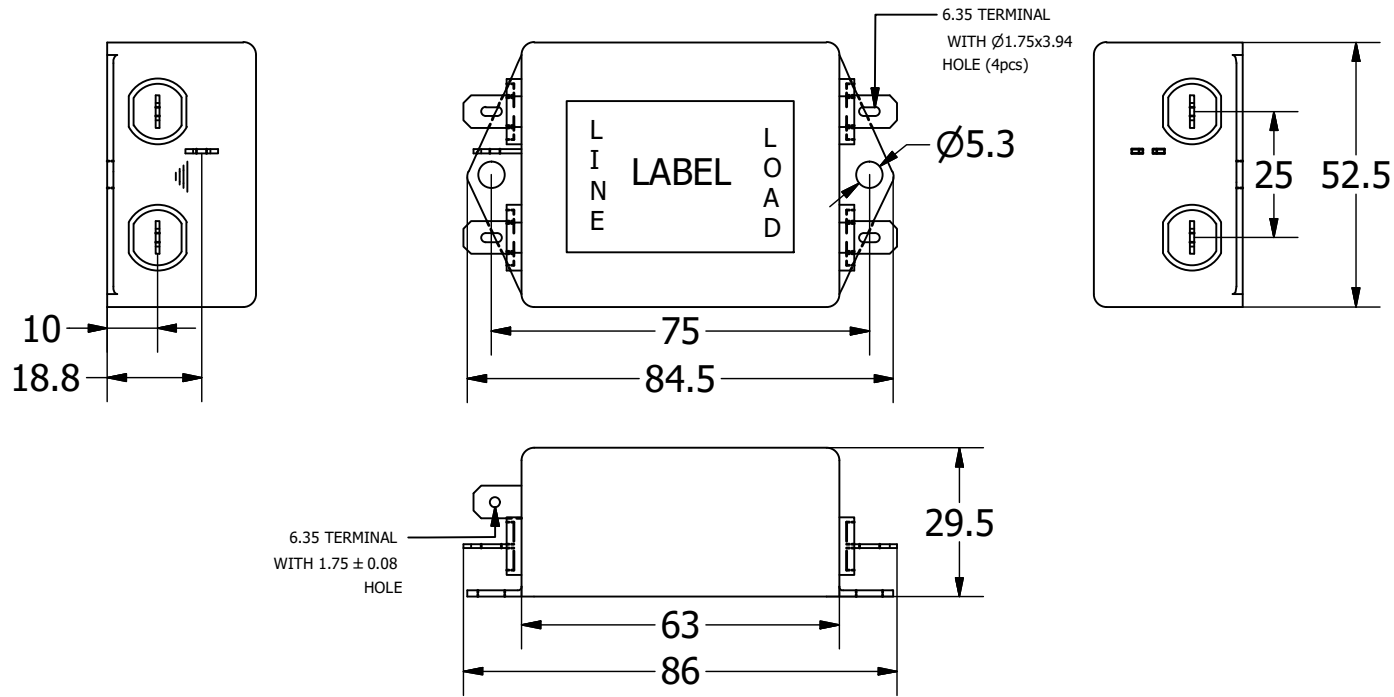


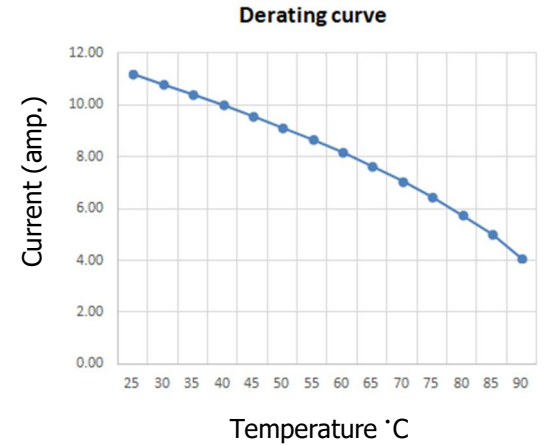
This DWG. is a sole property of ARROW POWER COMPONENTS PVT. LTD. unauthorised use of this DWG. or making product as per DWG. without our permission or any misuse is not permitted.

Mechanical Details



NOTES: UNLESS OTHERWISE SPECIFIED

1	TOLERANCE TO BE ± 1.0 mm.
2	ALL DIMENSIONS ARE IN MM
3	



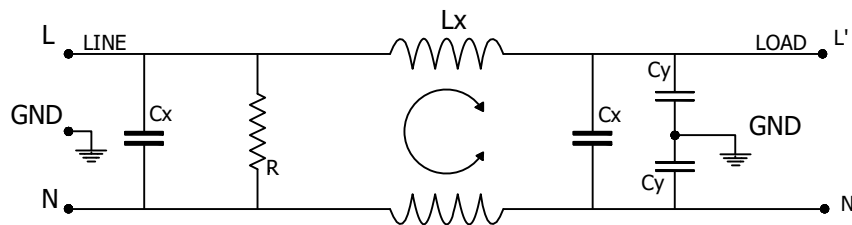
PRODUCT LABEL

EMC EMV FILTER

EN2030-10-F
120/250 VAC, 50/60 Hz
10A@40°C
25/100/21

UL US CE

Electrical Schematic

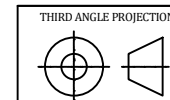


SPECIFICATION

- 1) RATED VOLTAGE (MAX):
10 AMP, 120/250 VAC 50-60HZ;
 - 2) Hi-pot RATING (ONE MINUTE):
LINE TO GROUND: 3000 VDC
LINE TO LINE : 1100 VDC
 - 3) MAXIMUM LEAKAGE LINE TO GROUND:
0.43mA @120 VAC 60 Hz;
0.74mA @250 VAC 50 Hz;
 - 4) CLIMATE CLASS: 25/100/21
- TEMPRATURE RANGE: -25°C to +100°C
OVERLOAD CURRENT: 1.5x Rated ct. for 1 min.

50 ohm - 50 ohm Typical Insertion Loss

FREQUENCY MHZ	0.01	0.1	0.5	1.0	2.0	5.0	10
COMMON DB	15	34	41	48	52	44	25
DIFFERENTIAL DB	25	62	86	71	59	41	28



A	ISSUE	SUJIT	AJAY	AUG. 2019
REV.	DESCRIPTION	ECN	DWN	APVD.
ARROW POWER COMPONENTS PVT. LTD. A-40, Wazirpur Industrial Area New Delhi, 110052 Email:- aj@emcemv.com				
DRAWN BY	VERIFIED BY	APPROVED BY	CHECKED DATE	
SUJIT	RISHABH	AJAY	09-AUG-2019	
DESC. SINGLE PHASE SINGLE STAGE FILTER				PAGE 1 Of 1
SERIES	PART NO.			
EN2030	EN2030-10-F			