


PCB TERMINAL BLOCKS

5mm Pitch Low Profile Rising Clamp Terminal Blocks

- 2 & 3 pole double interlocking mechanism for increased strength
- 4-12 pole solid block end stackable
- Moulded in green UL94-V0 flame retardant PA
- Professional rising clamp terminals
- 0.2-2.5mm² (30-14AWG) solid cable
- 0.2-1.5mm² (30-14AWG) stranded cable
- Guided pin alignment
- Captive screw
-  approved

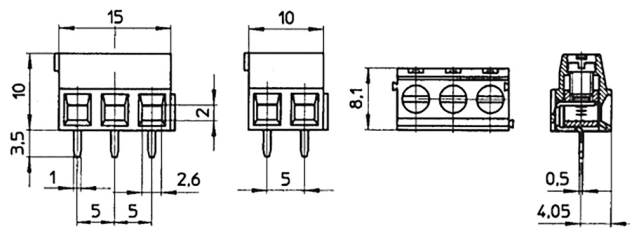
CTB0500



TYPE NO.	POLES	LENGTH
CTB0500/2	2	10mm
CTB0500/3	3	15mm
CTB0500/4	4	20mm
CTB0500/5	5	25mm
CTB0500/6	6	30mm
CTB0500/7	7	35mm
CTB0500/8	8	40mm
CTB0500/9	9	45mm
CTB0500/10	10	50mm
CTB0500/11	11	55mm
CTB0500/12	12	60mm

SPECIFICATION

Rating	14A/250V UL=14A/300V, VDE&IMQ=14A/250V
Dielectric strength	≥2kV
Impulse withstand voltage	4kV
Working temperature	110°C
Moulding	UL94-V0 flame retardant PA
Pin/terminal	Tinned, nickel plated brass
Rising clamp	Tinned, nickel plated brass
Screw/torque	M3 steel zinc plated, 0.5Nm
Recommended PCB hole size	ø1.3mm



PCB
TERMINAL
BLOCKS

INTER-
CONNECTION

FUSES &
FUSE-
HOLDERS

LEDs &
INDICATORS

MINIATURE
SWITCHES

LIMIT &
SAFETY
SWITCHES

CONTROL
PRODUCTS

INTERFACE
MODULES &
SUPPORTS

RELAY
BASES

DIN RAIL
ENCLOSURES

BATTERIES

SOLAR
PANELS

TRANS-
FORMERS