



Figure similar

SIGNAL COLUMN DIAMETER 50 MM; SINGLE ELEMENT IP54; FLASHING LIGHT ELEMENT, LED YELLOW 115 V AC/DC

General technical data:

product brand name		SIRIUS
Product component Light source		Yes
Design of the optical signal		blinklight
Type of voltage of the operating voltage		AC
Operating voltage		
• 1 with AC at 50 Hz Rated value	V	115
• 1 with AC at 60 Hz Rated value	V	115
Equipment marking acc. to DIN EN 61346-2		P

Mechanical data:

Outer diameter of the signal column element	mm	50
---	----	----

Lamp:

Type of light source		LED
----------------------	--	-----

Ambient conditions:

Ambient temperature during operation	°C	-20 ... +50
Protection class IP		IP54
Height	mm	67
Width	mm	52

Certificates/ approvals:

General Product Approval	EMC	Declaration of Conformity	Shipping Approval
--------------------------	-----	---------------------------	-------------------



Further information

Information- and Downloadcenter (Catalogs, Brochures,...)

<http://www.siemens.com/industrial-controls/catalogs>

Industry Mall (Online ordering system)

<http://www.siemens.com/industrymall>

Cax online generator

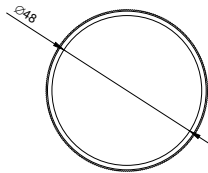
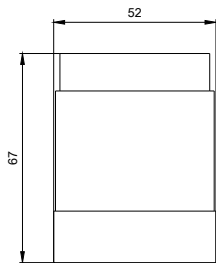
<http://support.automation.siemens.com/WW/CAXorder/default.aspx?lang=en&mlfb=8WD42405BD>

Service&Support (Manuals, Certificates, Characteristics, FAQs,...)

<https://support.industry.siemens.com/cs/ww/en/ps/8WD42405BD>

Image database (product images, 2D dimension drawings, 3D models, device circuit diagrams, EPLAN macros, ...)

http://www.automation.siemens.com/bilddb/cax_de.aspx?mlfb=8WD42405BD&lang=en



W8 4444: 8WD42-..._ALL

last modified:

15.01.2015