

Power Entry Connector

pro-ELEC



RoHS
Compliant

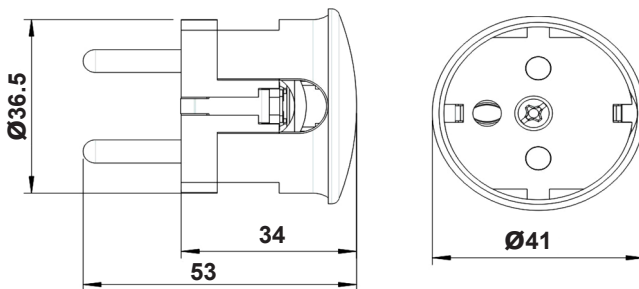
Description

Rewireable, for supply line H05VV-F 3G 0.75mm², 3G 1mm² and 3G 1.5mm²

Specifications

Rated Voltage	: 250V
Rated Current	: 16A
Type of Terminals	: Screw terminals
Material of Terminals	: CuZn 37, CuZn 39, Fe
According to	: DIN49441 Teil 1
Carrying Parts, Cover	: Urea moulding compound type 131.5 or phenolic moulding compound type 31

Diagram



	N	L	PE
Wire stripping	25mm	25mm	40mm

Part Number Table

Description	Part Number
Power Entry Connector, 16A, White, Nylon Body	2029/WS

Dimensions : Millimetres

Important Notice : This data sheet and its contents (the "Information") belong to the members of the AVNET group of companies (the "Group") or are licensed to it. No licence is granted for the use of it other than for information purposes in connection with the products to which it relates. No licence of any intellectual property rights is granted. The Information is subject to change without notice and replaces all data sheets previously supplied. The Information supplied is believed to be accurate but the Group assumes no responsibility for its accuracy or completeness, any error in or omission from it or for any use made of it. Users of this data sheet should check for themselves the Information and the suitability of the products for their purpose and not make any assumptions based on information included or omitted. Liability for loss or damage resulting from any reliance on the Information or use of it (including liability resulting from negligence or where the Group was aware of the possibility of such loss or damage arising) is excluded. This will not operate to limit or restrict the Group's liability for death or personal injury resulting from its negligence. pro-ELEC is the registered trademark of Premier Farnell Limited 2019.

Newark.com/exclusive-brands
Farnell.com/exclusive-brands
Element14.com/exclusive-brands

pro-ELEC