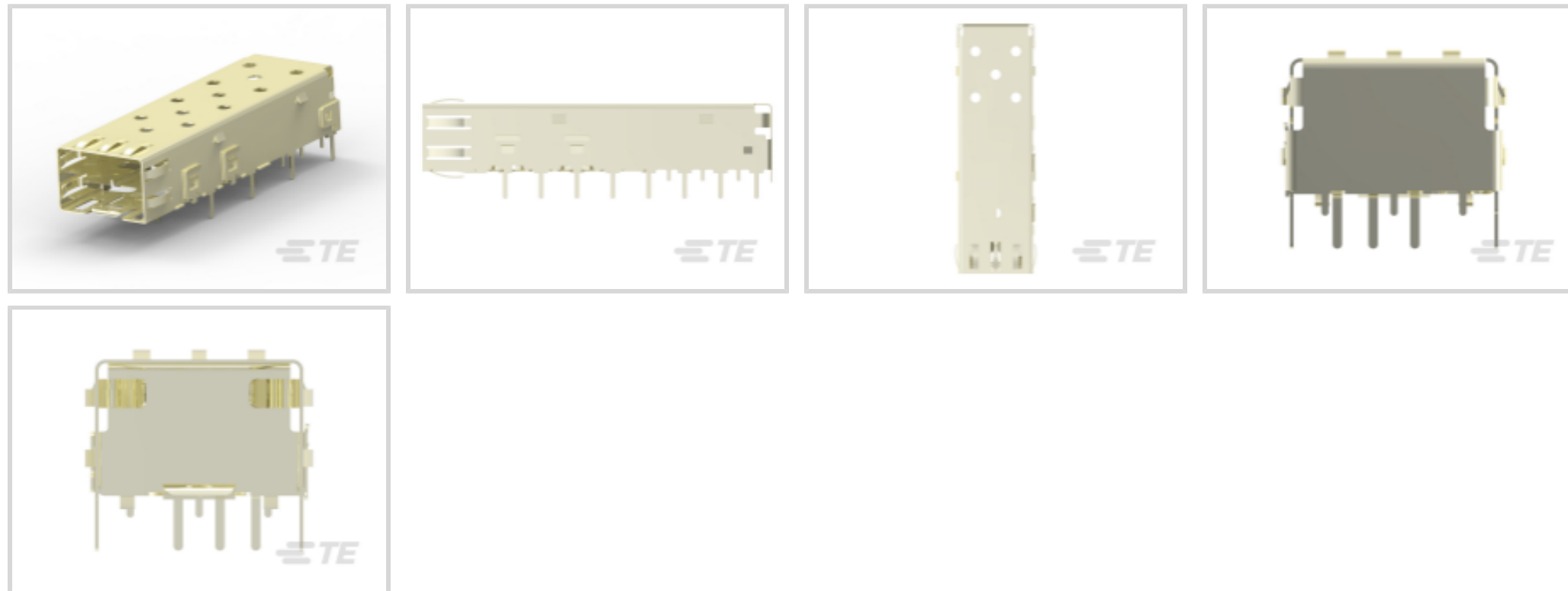




TE Internal #: 2227303-3
 SFP/SFP+/zSFP+, Cage, Data Rate (Max) 4 Gb/s, External Springs,
 zSFP+ Thermally Enhanced, Port Matrix Configuration 1 x 1,
 Through Hole - Solder

[View on TE.com >](#)

Connectors > Pluggable IO Connectors & Cages > SFP/SFP+/zSFP+



Pluggable I/O Product Type: **Cage**

Data Rate (Max): **4 Gb/s**

EMI Containment Feature Type: **External Springs**

Pluggable I/O Applications: **zSFP+ Thermally Enhanced**

Included Lightpipe: **No**

Features

Product Type Features

Form Factor	SFP
Cage Type	Single
Pluggable I/O Product Type	Cage
Connector System	Cable-to-Board
Sealable	No
Connector & Contact Terminates To	Printed Circuit Board

Configuration Features

Port Matrix Configuration	1 x 1
Number of Ports	1

Electrical Characteristics

Data Rate (Max)	4 Gb/s
-----------------	--------

Contact Features

Tail Plating Material	Tin
-----------------------	-----

Termination Features



Termination Method to Printed Circuit Board	Through Hole - Solder
---	-----------------------

Mechanical Attachment

PCB Mounting Style	Through Hole - Solder
--------------------	-----------------------

Connector Mounting Type	Board Mount
-------------------------	-------------

Housing Features

Cage Material	Stainless Steel
---------------	-----------------

Dimensions

Tail Length	1.8 mm[.071 in]
-------------	-----------------

PCB Thickness (Recommended)	1.5 mm[.059 in]
-----------------------------	-----------------

Usage Conditions

Operating Temperature Range	-55 – 85 °C[-67 – 185 °F]
-----------------------------	---------------------------

Operation/Application

Heat Sink Compatible	No
----------------------	----

For Use With Pluggable I/O Products	SFP SMT Connector
-------------------------------------	-------------------

Pluggable I/O Applications	zSFP+ Thermally Enhanced
----------------------------	--------------------------

Packaging Features

Packaging Method	Box & Tray, Tray
------------------	------------------

Other

EMI Containment Feature Type	External Springs
------------------------------	------------------

Included Lightpipe	No
--------------------	----

Product Compliance

[For compliance documentation, visit the product page on TE.com>](#)

EU RoHS Directive 2011/65/EU	Compliant
------------------------------	-----------

EU ELV Directive 2000/53/EC	Not Yet Reviewed
-----------------------------	------------------

China RoHS 2 Directive MIIT Order No 32, 2016	No Restricted Materials Above Threshold
---	---

EU REACH Regulation (EC) No. 1907/2006	Current ECHA Candidate List: JAN 2021 (211) Candidate List Declared Against: JAN 2021 (211) Does not contain REACH SVHC
--	---

Halogen Content	Low Halogen - Br, Cl, F, I < 900 ppm per homogenous material. Also BFR/CFR/PVC Free
-----------------	---

Solder Process Capability

Wave solder capable to 260°C

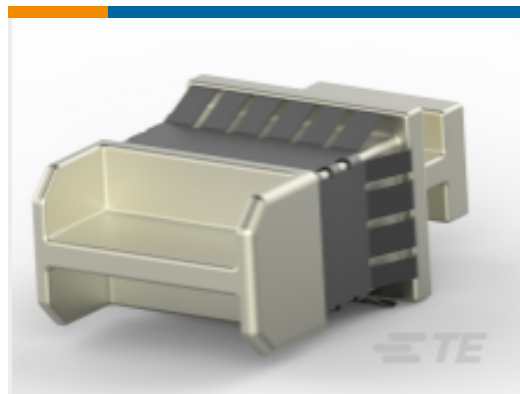
Product Compliance Disclaimer

This information is provided based on reasonable inquiry of our suppliers and represents our current actual knowledge based on the information they provided. This information is subject to change. The part numbers that TE has identified as EU RoHS compliant have a maximum concentration of 0.1% by weight in homogenous materials for lead, hexavalent chromium, mercury, PBB, PBDE, DBP, BBP, DEHP, DIBP, and 0.01% for cadmium, or qualify for an exemption to these limits as defined in the Annexes of Directive 2011/65/EU (RoHS2). Finished electrical and electronic equipment products will be CE marked as required by Directive 2011/65/EU. Components may not be CE marked. Additionally, the part numbers that TE has identified as EU ELV compliant have a maximum concentration of 0.1% by weight in homogenous materials for lead, hexavalent chromium, and mercury, and 0.01% for cadmium, or qualify for an exemption to these limits as defined in the Annexes of Directive 2000/53/EC (ELV). Regarding the REACH Regulation, the information TE provides on SVHC in articles for this part number is based on the latest European Chemicals Agency (ECHA) 'Guidance on requirements for substances in articles' posted at this URL: <https://echa.europa.eu/guidance-documents/guidance-on-reach>

Compatible Parts



TE Part # CAT-SF59-C76264
SFP Connectors



TE Part # 1888901-1
SFP+ EMI Plug



TE Part # 1367147-1
SFP COVER, UNPLATED



TE Part # 1367147-3
SFP COVER, UNPL, NO LOGO

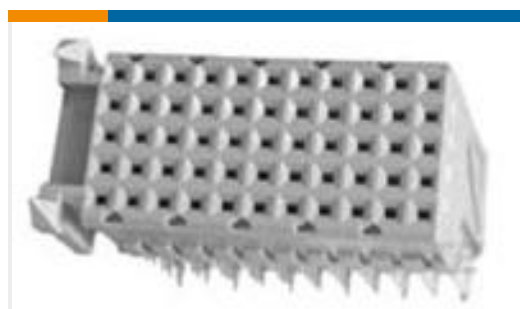


TE Part # 1761394-1
DUST COVER, SFP, GANGED & STACKED

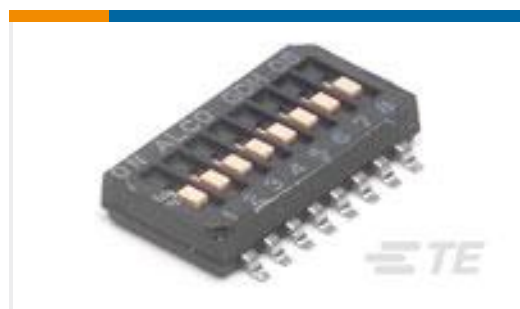
Customers Also Bought



TE Part #1367073-1
20 POS SMT CONN, SFP, 15AU



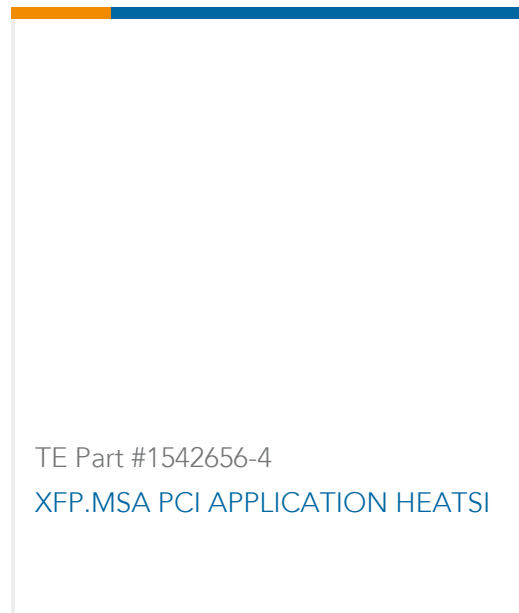
TE Part #100161-1
Z-PACK/C F-HDR 55P



TE Part #1571983-5
GDH04STR04=DIP SWITCH



TE Part #1888250-3
Low Profile,RJ45,1x1,No Led's



Documents

CAD Files

[3D PDF](#)

3D

Customer View Model

[ENG_CVM_CVM_2227303-3_C.2d_dxf.zip](#)

English

Customer View Model

[ENG_CVM_CVM_2227303-3_C.3d_igs.zip](#)

English

Customer View Model

[ENG_CVM_CVM_2227303-3_C.3d_stp.zip](#)

English

By downloading the CAD file I accept and agree to the [Terms and Conditions](#) of use.

Product Specifications

[Application Specification](#)

English

Product Environmental Compliance

[Product Compliance](#)

English

[Product Compliance](#)

English