

Tubular Handles • front mounting

24321.0625



Product Description

Tubular handles are used, for example, on machine doors. These tubular handles made of aluminium are characterised by their ergonomic and robust construction and modern design. This version is equipped with angled handle legs (legs).

Material

Cap

- Plastic, light grey

Handle

- Aluminium, plastic coated, similar to RAL 9005 black, matt structure

Covering

- Plastic, black

Assembly

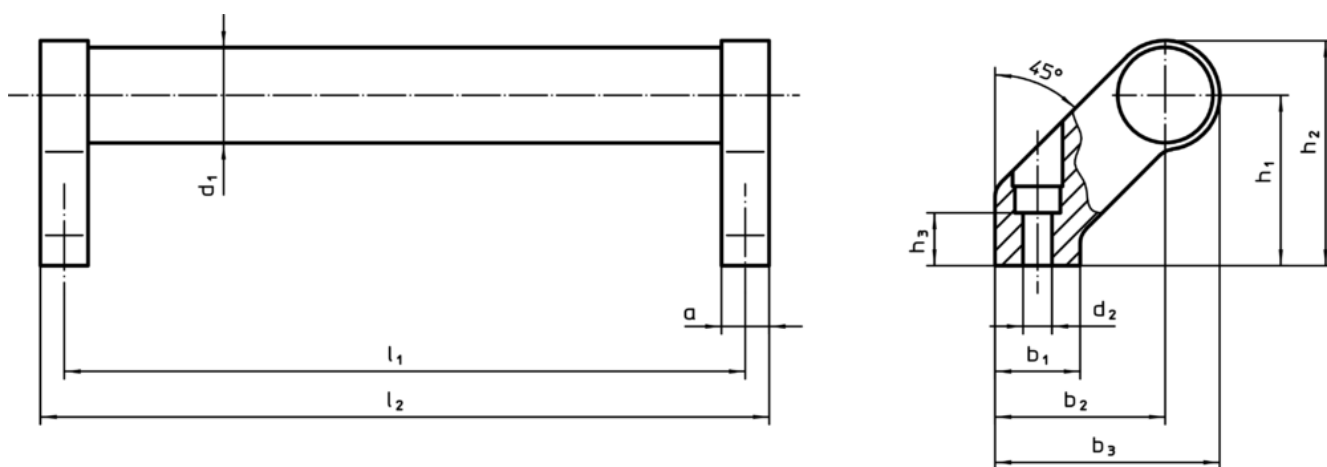
The handles can be mounted to the component from the front (operating side) using cylinder screws. The hole is closed with a plastic covering.

More information

Notes

Special types on request.

Drawing



Order information

d_1	l_1 ± 0.25	a	b_1	b_2	Dimensions			d_2	h_1	h_2	h_3 min.	l_2	[g]	Art. No.
					b_3	[mm]	[mm]							
black														
28	500	14	25	50	66	6.5	50	66	17	514	559	24321.0625		

Compliance

RoHS compliant

Contains lead - compliant according to exceptions 6a / 6b / 6c

Contains SVHC substances >0,1% w/w

Contains lead - SVHC list [REACH] as of 10.06.2022

Contains Proposition 65 substances



Lead can cause cancer and reproductive harm from exposure
<https://www.P65Warnings.ca.gov/>

Free from Conflict Minerals

This product does not contain any substances designated as "conflict minerals" such as tantalum, tin, gold or tungsten from the Democratic Republic of Congo or adjacent countries.