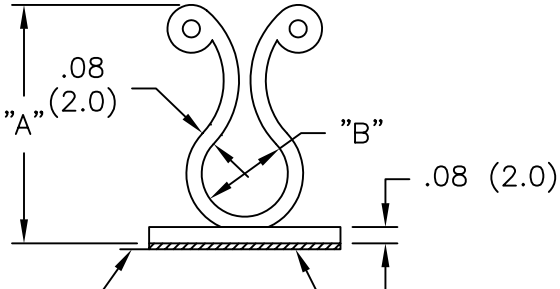
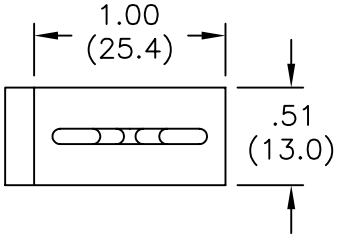


PART NO. W/ADHESIVE	"A" REF.	"B" BUNDLE DIA. RANGE
KLB-350A-RT	1.07 (27.2)	.30-.40 (7.6-10.1)
KLB-450A-RT	1.23 (31.2)	.40-.50 (10.1-12.7)
KLB-750A-RT	1.58 (40.1)	.70-.80 (17.8-20.3)



TYPICAL RELEASE
TAB LOCATION

1/32 (0.8) THICK,
DOUBLE SIDED
ADHESIVE TAPE

NOTES:

1. MATERIAL: NYLON 6/6 (RMS-01).
FLAME RETARDANT, NYLON (RMS-19),
AVAILABLE BY SPECIAL ORDER ONLY.
2. COLOR: NATURAL.
3. ACRYLIC ADHESIVE TAPE (RMS-15), WHITE LINER.
RUBBER ADHESIVE TAPE (RMS-102), BLUE LINER,
AVAILABLE BY SPECIAL ORDER ONLY.
TO ORDER USE KLB-XXXA1-RT.

TITLE: KURLY-LOK ON BASE			DWG IN IN (MM)		FINAL	
TOLERANCES UNLESS NOTED .XX=±.010 .XXX=±.005 FRAC=±1/64 ANG=±1'			FILE # KLB	DWN: J.B.	APP:	
C ADDED RUBBER ADHESIVE BY SPECIAL ORDER SM 05.17.02			MAT'L: SEE NOTES	DT: 01-23-96	DT:	PART #
B ADDED NOTE 3. SJ 03.05.02			RE: RICHCO, INC.	RICHCO INC. PO BOX 804238, CHICAGO, 60680 (773) 539-4060		SEE TABLE
A CHANGED FILE NUMBER SM 05.31.01						PRINT TYPE
REV DESCRIPTION ENGR DATE						CA