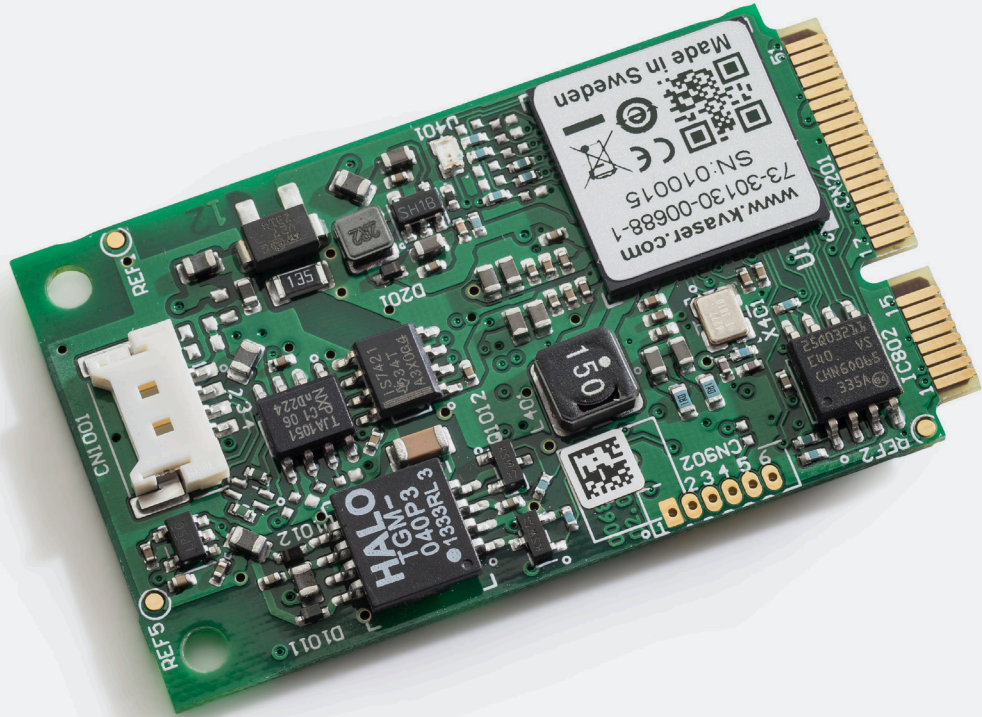
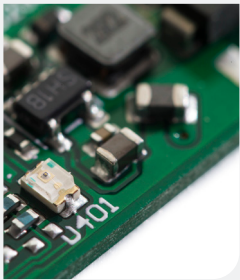




Learn more about
this product



Your Gateway to Efficient Connectivity

The Kvaser Mini PCI Express HS is a highly integrated CAN (controller area network) add-on board that lets embedded system developers add CAN functionality to any standard computer board with mini PCI Express capability.

The add-on board offers a single channel, high-speed CAN interface with error frame detection and on-board buffer. This board has a low profile connector that complies with the mini PCI Express standard, which connects via a cable to a DSUB connector (or other type) at the computer housing. With just the CAN communication link itself exposed, total system EMC performance is protected because all the electronics remain inside the computer housing.



Warranty

2-Year warranty. See our general conditions and policies for details.



Support

Free support for all products by contacting support@kvaser.com



EAN

73-30130-00688-1

Major Features

- Supports a bitrate from 40 to 1,000 kbit/s and a CAN transfer rate up to 20,000 messages/s.
- Timestamp accuracy is 25 µs.
- Low profile connector complies with the mini PCI Express standard, which connects via a cable to a DSUB (or other type) at the computer housing.
- A 4-pin Molex connector provides single CAN channel access.
- Complies with EN 61000-6-2:2005, specifying EMC immunity for industrial environments.
- Operates over the industrial temperature range of -40 to +85 °C.
- Kvaser's free of charge CANLIB SDK can be used to develop software for the Mini PCI Express HS board.
- Compatible with J1939, CANopen, NMEA 2000® and DeviceNet. Higher layer protocol translation handled by the user's application. For software support please see our Technical Associates products and our Software Download page (www.kvaser.com).

Support

Documentation, Kvaser SDK and drivers can be downloaded for free at www.kvaser.com/downloads.

Kvaser SDK is a free resource that includes everything you need to develop software for the Kvaser CAN interfaces. Includes full documentation and many program samples, written in C, C++, C#, Delphi, Visual Basic, Python and t script language.

Kvaser CAN hardware is built around the same common software API. Applications developed using one device type will run without modification on other device types.



Technical Data

Bit Rate	40-1000 kbps
Buffers	On Board Buffer
Channels	1
Certifications	CE, RoHS
Connectors	Molex 53780 PanelMate™
Current Consumption	Typical values are (@ 3.3V from Mini PCI Express slot): 180mA (Kvaser Mini PCI Express HS), 280mA (Kvaser Mini PCI Express 2xHS)
Dimensions	51 x 30 x 5 mm
Error Frame Generation	No
Error Counters Reading	No
Galvanic Isolation	Yes
Interfaces	CAN, USB
Messages Per Second Receive	14000 mps
Messages Per Second Sending	18000 mps
Operative Systems	Linux, Windows ¹
Silent Mode	Yes
Temperature Range	-40 to +85 °C
Weight	5 g (13 g including cable)

¹ Windows 7, 8, 10 (IA-32 and x86-64)
Windows 11 (x86-64)