

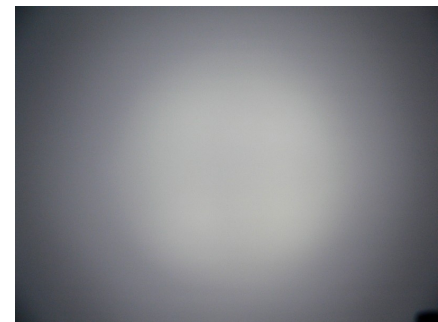
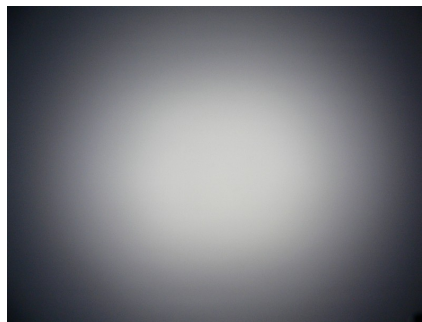
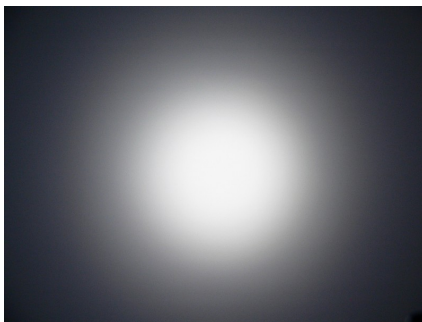
Boom-MC reflector for Cree's MC-E series of LEDs



- Specially designed for Cree's MC-E series of LEDs.
- Special care taken to make a uniform white or warm white illumination. Lenses work well with other colors, too.
- Lens material optical grade metallized PC. Allows use of high current and temperature conditions
- Best available optical efficiency, up to 90%.

LENS TYPES

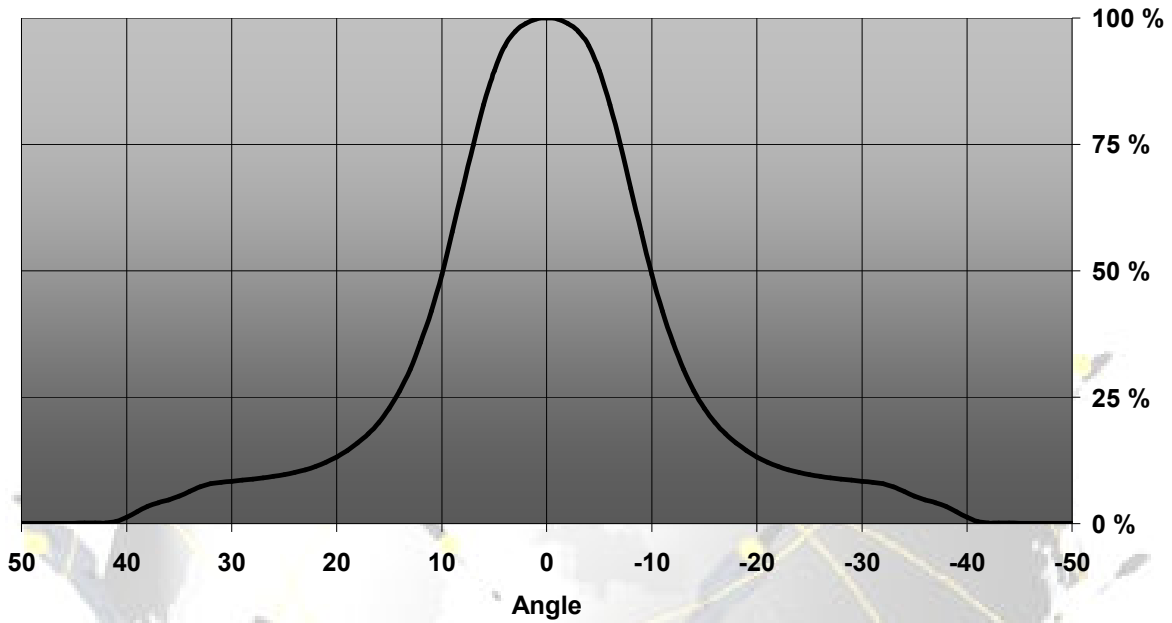
NAME	ORDERING CODE	FWHM Angle
Boom-MC Spot	CA10716_Boom-MC-S	±10°
Boom-MC Medium	CA10928_Boom-MC-M	±19°
Boom-MC Wide	CA10929_Boom-MC-W	±24°



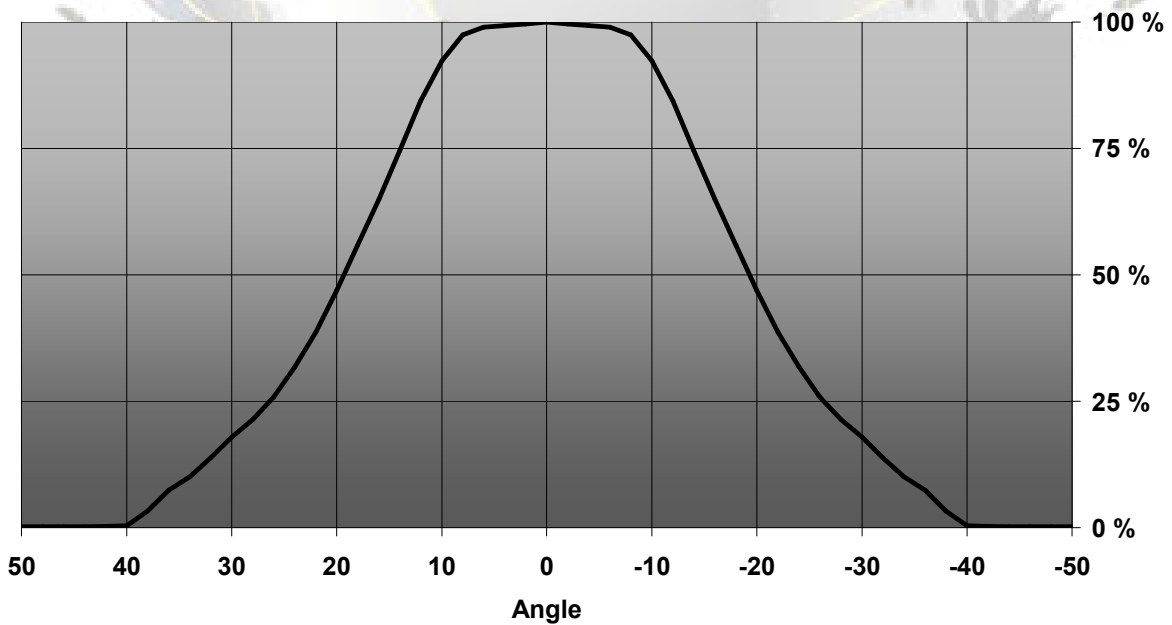
© Ledil Oy – PRELIMINARY - Subject to change without prior notice

MEASUREMENT DATA

Relative Intensity of BOOM-MC-S

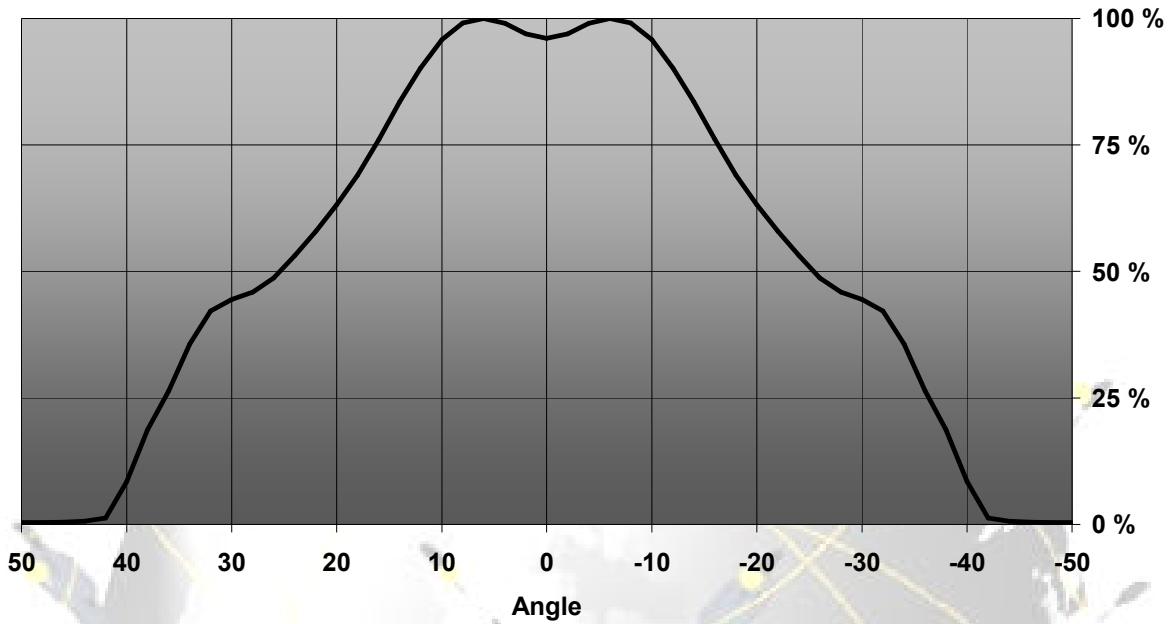


Relative Intensity of BOOM-MC-M



© Ledil Oy – PRELIMINARY - Subject to change without prior notice

Relative Intensity of BOOM-MC-W



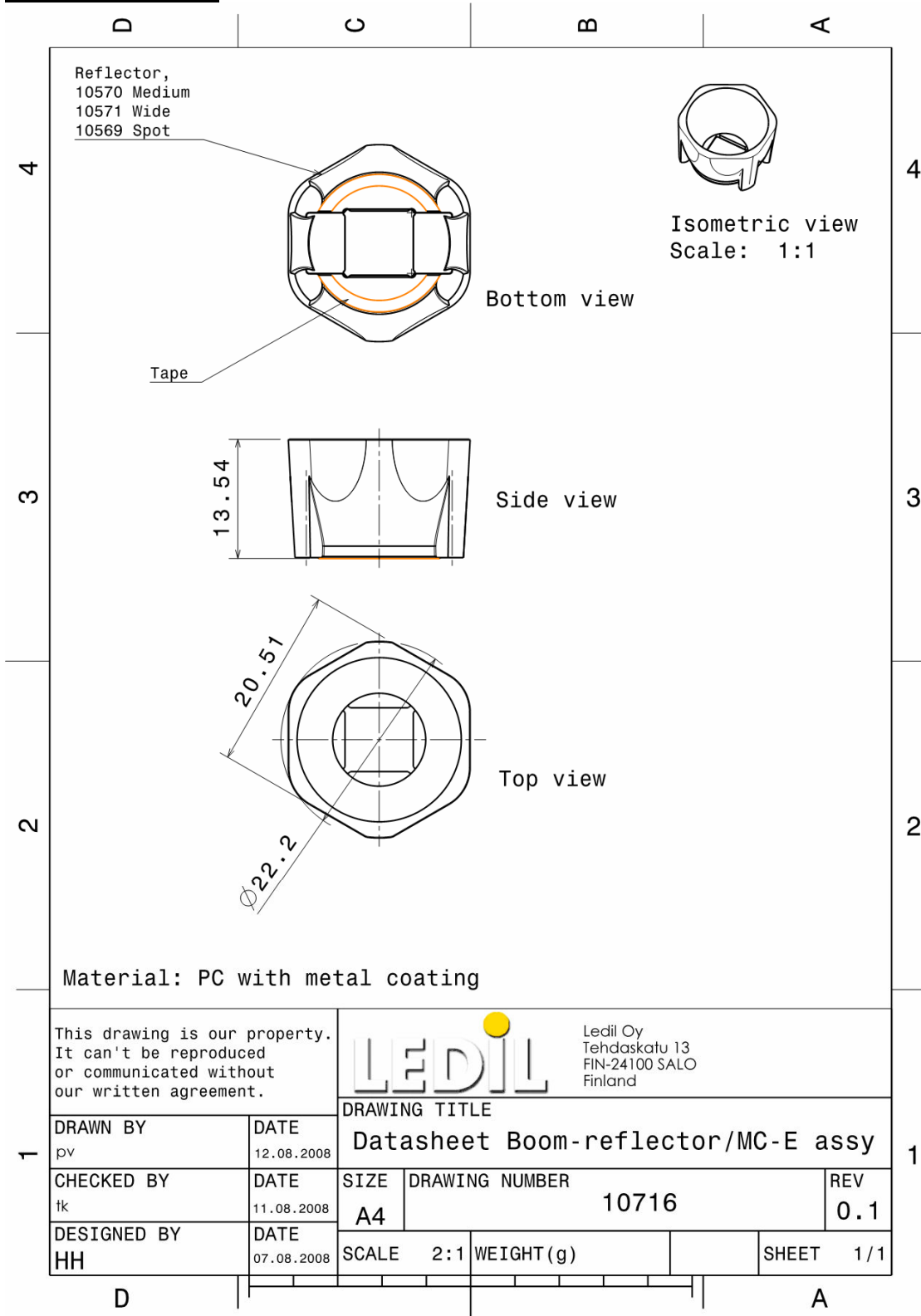
© Ledil Oy – PRELIMINARY - Subject to change without prior notice

Ledil Oy
 Tehdaskatu 13
 FIN-24100 SALO, Finland

www.ledil.com
 email: ledil@ledil.com
 FAX: +358-2-733 8001

2009-11-28

DRAWINGS



© Ledil Oy – PRELIMINARY - Subject to change without prior notice