

Software IBREXDLL

Measured data can be recorded in MS Excel via IMBus module



Application:

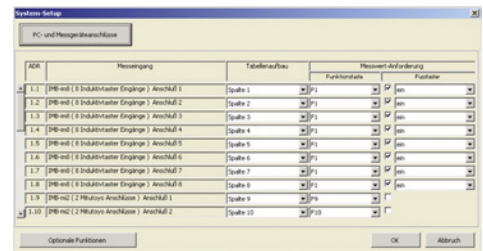
For transmitting measured data from all IBR interfaces and measuring instruments to MS Excel. Imported measuring data can be freely assigned to cells of an Excel file for subsequent statistical evaluation using control charts, histograms etc.

Execution:

- Easy and clear operation
- Automatic allocation of measuring inputs to columns or cells in an Excel table
- Visualisation of up to 20 measuring inputs on digit and bar graph displays
- Time-controlled measured value recording
- Zero balance and calibration of measuring inputs
- No impairment of standard Excel functions
- Value measurements triggered via data button on measuring instrument, function keys on the PC or foot-operated switch on the interface
- Integrated SPC elements (control chart, histogram, statistical data etc.)
- Supports European and Asian languages

Delivery:

CD with detailed operating instructions in PDF file



Art. no.	39956505
Brand	IBR
Manufacturer Part Number	F710 001 + F720 002
Harmonized System Code	85234990
Gross Weight	0.319 kg