

har-modular fixing rail 25.30

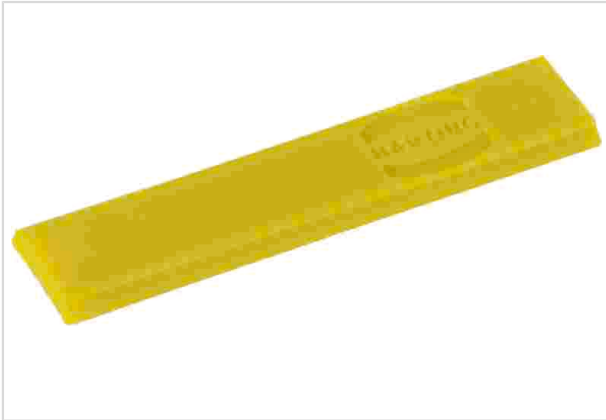


Image is for illustration purposes only. Please refer to product description.

Part number	02 09 500 1005
Specification	har-modular fixing rail 25.30
HARTING eCatalogue	https://b2b.harting.com/02095001005

Identification

Category	Accessories
Series	har-modular®
Type of accessory	Fixing rail

Technical characteristics

Length	25.3 mm
Isolation group	I ($600 \leq CTI$)
Moisture Sensitivity Level (MSL)	1 acc. to ECA/IPC/JEDEC J-STD-020D

Material properties

Material (accessories)	Polyamide (PA)
Colour (accessories)	Yellow
RoHS	compliant
ELV status	compliant
China RoHS	e
REACH Annex XVII substances	Not contained
REACH ANNEX XIV substances	Not contained
REACH SVHC substances	Not contained
California Proposition 65 substances	Not contained



Pushing Performance

Specifications and approvals

UL / CSA	UL 1977 ECBT2.E102079
	CSA-C22.2 No. 182.3 ECBT8.E102079

Commercial data

Packaging size	100
Net weight	0.2 g
Country of origin	Romania
European customs tariff number	85389099
eCl@ss	27440292 Connector component (accessories)