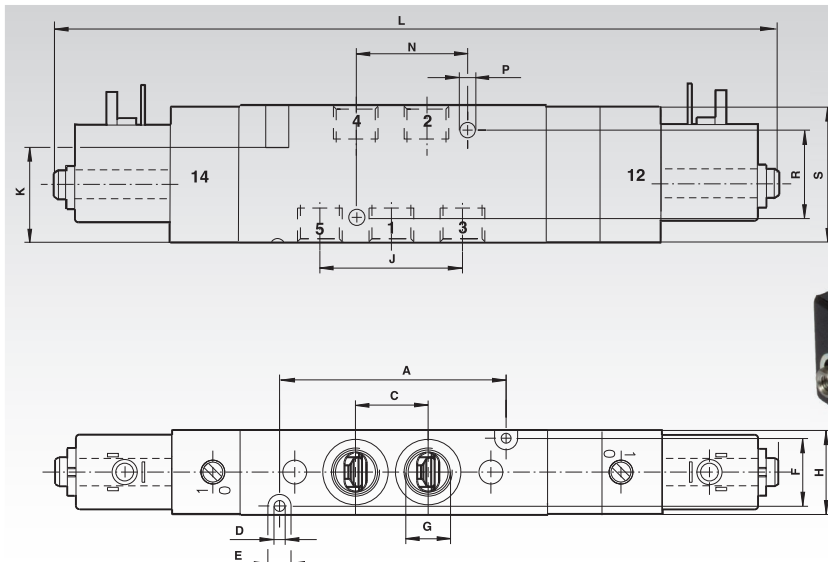


## 5/3 Solenoid Valves, with twin pilot



### Materials:

Housing and base plates: Aluminium, Spindle: Stainless Steel;  
Piston, spacers and cover: Plastic; Static and dynamic seals: NBR;  
Screws: zinc-plated;  
Springs: Stainless Steel.

Standard pilot controls with replaceable solenoid system for all common voltages.

The valves are suitable for lubricated or non-lubricated standard compressed air.

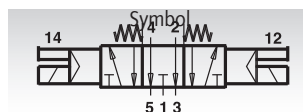
At normal operating conditions the system has a lifespan of 50 million switching cycles.

The valve system (cartridge) is an optimised version of the million-times proven sealing system. Manual override with detent.

### Version A: Rest position: all connections locked



### Version B: Rest position: Connection 2 and 4 relieved



Ordering Details: e.g.: Product No. 850 518 11, 5/3 Solenoid Valve, Connecting Thread G 1/8, Voltage 24 V

Product No. Version A	Product No. Version B	Connection	Voltage	Flow (l/min)	Operating pressure (bar)	Weight g	Product No. Socket*	Product No. Spare Solenoid*
850 518 11	850 618 11	G 1/8	24V DC	500	3 - 8	350	858 000 01	858 000 06
850 528 11	850 628 11	G 1/4	24V DC	950	3 - 8	470	858 000 01	858 000 06
850 528 12	850 628 12	G 1/4	230V 50/60Hz	950	3 - 8	470	858 000 01	858 000 07

\* See below.

Dim.	A	B	C	D	E	F	G	H	J	K	L	M	N	O	P	R	S	T	U
G 1/8	50	—	16,2	3,2	6,5	17	G 1/8	22	32,4	28	189	—	25	—	4,5	26	35	—	—
G 1/4	66	—	21	3,2	6,5	20	G 1/4	25	42	28	217	—	32	—	4,5	26	40	—	—

### Solenoid and Voltage Selection

22 mm solenoid with plug interface according to DIN 43650 Form B.  
Solenoid can be turned in steps of 90°.

Voltage: 24V DC  $\pm 10\%$ .

Solenoid power inrush/holding: 2W.

Voltage: 230V  $\pm 10\%$ , 50/60Hz.

Solenoid power inrush/holding: 6/5VA.

Duty cycle: 100% ED.

Protection rating: IP 65 with sealed connectors (ISO 6952).

### Socket according to DIN 43650, without Cable

**Material:** Polyamide.

**Weight:** 20 g.

**Product No.**

858 000 01



### Spare Solenoids according to DIN 43650

**Weight:** 63 g.

**Product No.** 24 V DC

858 000 06

**Product No.** 230 V 50/60 Hz

858 000 07

