

Tubular Handles

24321.0550

Product Description

Tubular handles are used, for example, on machine doors. These tubular handles made of aluminium are characterised by their ergonomic and robust construction and modern design. This version is equipped with angled handle legs (legs).



Material

Cap

- Plastic, light grey

Handle

- Aluminium, plastic coated, similar to RAL 9005 black, matt structure

Assembly

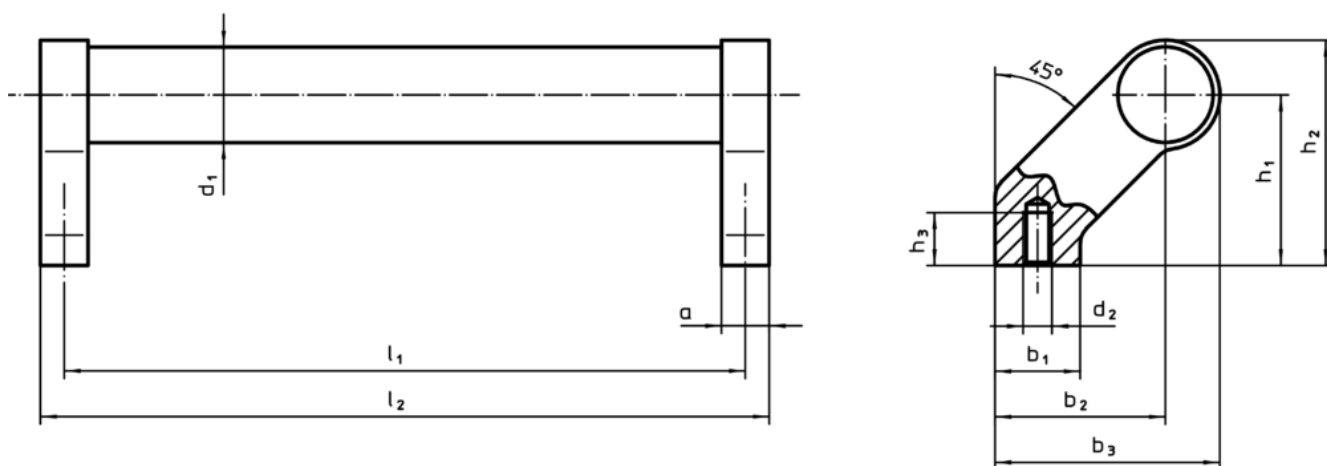
Back mount handle.

More information

Notes

Special types on request.

Drawing



Order information

Dimensions											[g]	Art. No.	
d ₁	l ₁ ±0.25	a	b ₁	b ₂	b ₃	d ₂	h ₁	h ₂	h ₃ min.	l ₂			
black													
28	350	14	25	50	66	M8	50	66	15	364	501	24321.0550	

Compliance

RoHS compliant

Contains lead - compliant according to exceptions 6a / 6b / 6c

Contains SVHC substances >0,1% w/w

Contains lead - SVHC list [REACH] as of 10.06.2022

Contains Proposition 65 substances



Lead can cause cancer and reproductive harm from exposure
<https://www.P65Warnings.ca.gov/>

Free from Conflict Minerals

This product does not contain any substances designated as "conflict minerals" such as tantalum, tin, gold or tungsten from the Democratic Republic of Congo or adjacent countries.