

MATERIAL

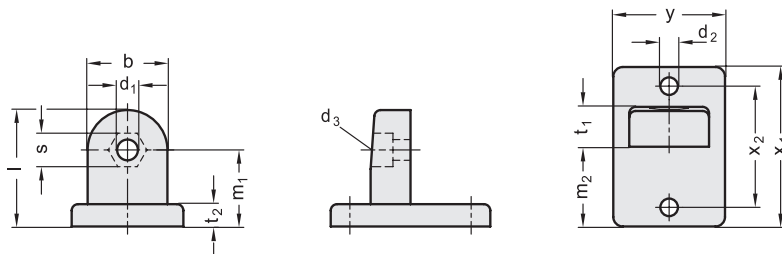
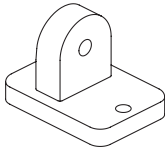
Aluminium.

STANDARD EXECUTIONS

- **GN 271-BL**: natural aluminium, matte finish.
- **GN 271-SW**: epoxy resin coating, RAL 9005 black colour, matte finish.

FEATURES AND APPLICATIONS

GN 271 bases can be assembled with pivoting connecting clamps GN 273 (see page 1753), GN 275 (see page 1756) or GN 277 (see page 1757).



| Code | Description | b | d1 | d2 | d3 | l | m1 | m2 | t1 | t2 | s | x1 | x2 | y | ⚖️ |
|----------|--------------|----|-----|-----|----|------|----|----|------|----|----|----|----|----|----|
| GN.56906 | GN 271-25-SW | 25 | 6.5 | 5.5 | M6 | 36.5 | 24 | 25 | 12.5 | 7 | 10 | 50 | 38 | 35 | 44 |
| GN.56901 | GN 271-25-BL | 25 | 6.5 | 5.5 | M6 | 36.5 | 24 | 25 | 12.5 | 7 | 10 | 50 | 38 | 35 | 44 |

- 1
- 2
- 3
- 4
- 5
- 6
- 7
- 8
- 9
- 10
- 11
- 12
- 13
- 14
- 15
- 16
- 17
- 18

Connecting clamps