



**Features**

- 1. IP66 waterproof construction**  
The front panel surface keeps water and dust out. Perfect for use in rough conditions.
- 2. Includes operation light (LED)**  
The operation LED illuminates so you can quickly verify operation status.

- 3. Certified with CE marking**  
EMC directive (EN50081-2/EN50082-2)  
Low voltage directive (EN61010-1)

**Product type**

Installation	Measurement time	Operation light	Rated voltage	Part No.
Panel installation	0 to 9999.9 hours	LED illuminates while operating.	12 V DC	TH833C
			24 V DC	TH834C

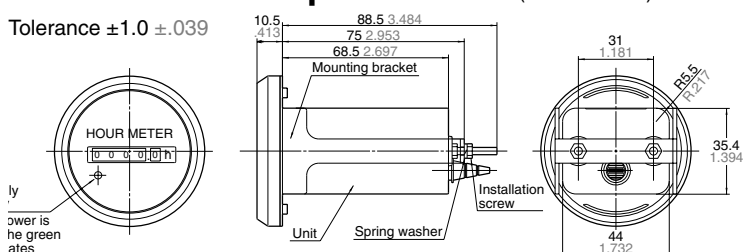
Note: Products are UL and c-UL certified as standard. (Suffix "U" is not required ON part numbers when ordering.)

**Specifications**

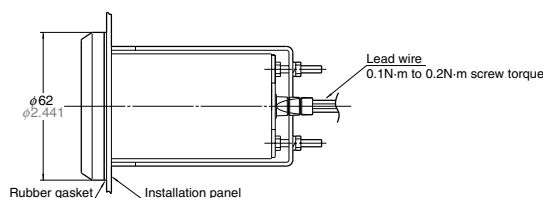
Item		Type	TH833C	TH834C
Rating	Rated voltage		12 V DC	24 V DC
	Usage voltage range		10.2 to 15.6 V DC	20.4 to 31.2 V DC
	Measurement time		0 to 9999.9 hours	
	Min. measurement time		0.1 hour (6 min.)	
Electrical characteristics	Power consumption		Approx. 1.5 W (With rated voltage applied at 25°C 77°F)	
	Insulation resistance (initial)		Min. 100 MΩ between charged and uncharged parts (measured at 500 V DC)	
	Breakdown voltage (initial)		Between charged and uncharged parts: 2,000 V AC for 1 minute.	
Mechanical characteristics	Temperature rise		Max. 55°C 131°F (measured at rated voltage and resistance law)	
	Functional vibration resistance		10 to 55 Hz (1 cycle/min.) Single amplitude: 0.35 mm (10 min. ON 3 axes)	
	Functional shock resistance		Min. 98 m/s <sup>2</sup> (4 times ON 3 axes)	
	Destructive vibration resistance		Min. 980 m/s <sup>2</sup> (5 times ON 3 axes)	
Usage conditions	Operation temperature		-20°C to +60°C -4°F to +140°F (Without due and frost)	
	Ambient humidity		45 to 85% RH (relative humidity)	
	Power supply ripple		Approx. 48% or less (single phase, all-wave rectification)	
Protective construction			IP66 (front panel with a rubber gasket)	

**Dimensions and part names** (unit: mm inch)

Tolerance ±1.0 ±.039

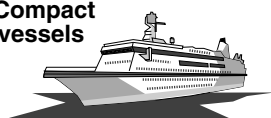


**Panel installation diagram**

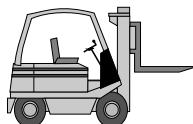


**APPLICATIONS**

• Compact vessels



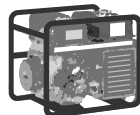
• Construction machines



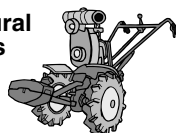
• Busses



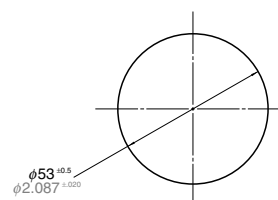
• Generators



• Agricultural machines



**Panel cutout dimensions**



(Unit: mm inch)