

- 1
- 2
- 3
- 4
- 5
- 6
- 7
- 8
- 9
- 10
- 11
- 12
- 13
- 14
- 15
- 16
- 17
- 18

**KNOB**

High-resilience polypropylene based (PP) technopolymer.

**STANDARD EXECUTIONS**

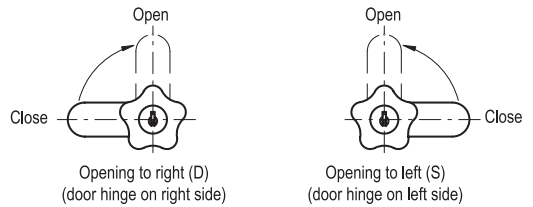
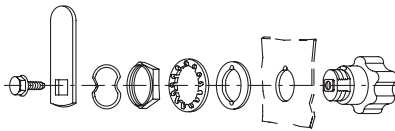
- Lock with stainless steel front plate, movement of the knob at 90°.
- Two nickel-plated brass keys, removable in two positions at 180° (locked or unlocked position).
- Opening to the right side (D) or left side (S).
- Stator and rotor in Zamac.
- Locking nut in brass.
- Spring washer in zinc-plated steel.
- Positioning washer in zinc-plated steel, thickness 1.2 mm to be welded to the metal sheet of the door for thin thickness.
- Flat closing lever in zinc-plated steel.
- **VC.308**: lock with 400 different combinations. Each lock has a key with different combination.
- **VC.308-U**: lock with one combination. All locks have the same combination and can be opened with the same key.
- **VC.308-M**: lock with 160 different combinations and master-key: each lock has a different combination and relative key. Two master-keys, which open all of them, are supplied for every purchase order.
- **VC.308-SS**: without lock. The knob can be used for opening both to the right or to left side.

**ACCESSORIES ON REQUEST**

Threaded extension to position the closing lever with l=10 mm.

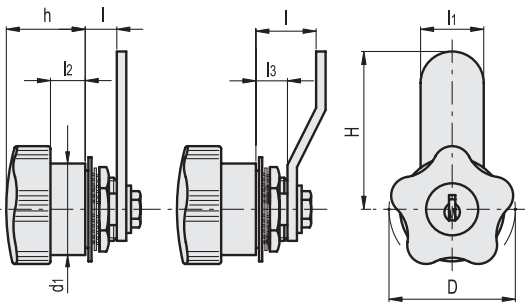


ELESA Original design

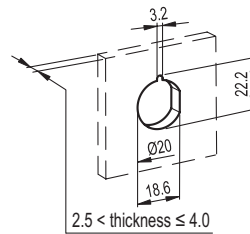


VC.308

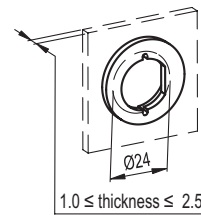
VC.309



Drilling template for direct fitting



Positioning washer (included in the supply) to be welded to the metal sheet of the door for thin thickness



**VC.308**

Code	Description	D	H	l±0.5	l1	l2	h	d1	⚖
68101	VC.308/40-D	40	50	10	20	11	25	29	146
68102	VC.308/40-S	40	50	10	20	11	25	29	146

**VC.308-U**

68103	VC.308/40-UD	40	50	10	20	11	25	29	146
68104	VC.308/40-US	40	50	10	20	11	25	29	146

**VC.308-M**

68105	VC.308/40-MD	40	50	10	20	11	25	29	146
68106	VC.308/40-MS	40	50	10	20	11	25	29	145

**VC.308-SS**

68111	VC.308/40-SS	40	50	10	20	11	25	29	115
-------	--------------	----	----	----	----	----	----	----	-----