

200 x 100 x 40 cm*

78.7" x 39.4" x 15.8"

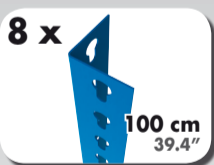
KIT AUTOCLICK RUEDAS PLUS 3-400



5 years
SIMONRACK
GUARANTEE



8 x



6 x



6 x



4 x



*MEDIDAS EN USO: 1979 x 1011 x 410 mm
USED MEASUREMENTS: 77.91" x 39.80" x 16.14"



ESTANTERIAS SIMON S.L. B.50.556.463
PG. ALFAMEN C/ POLIGONO C, N°3
ALFAMEN (ZARAGOZA)

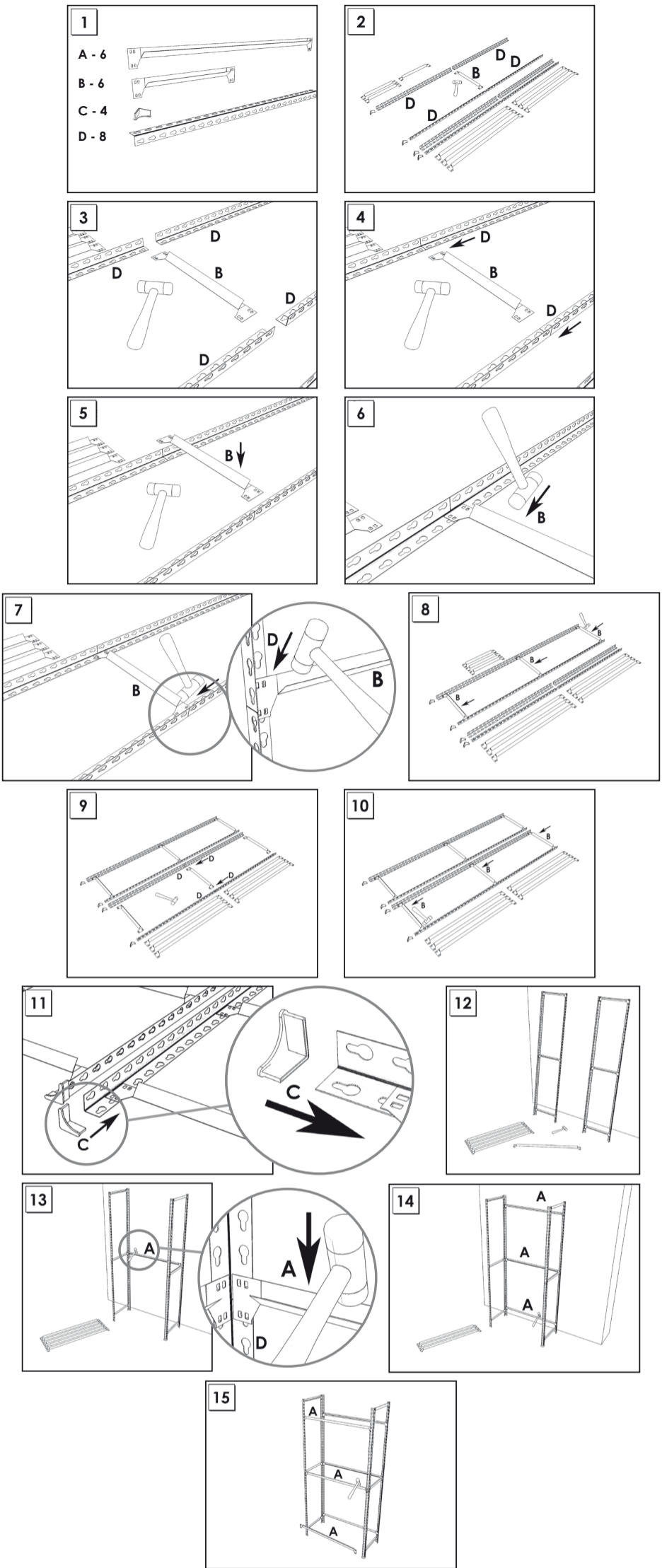
Simon
Rack
SINCE 1964 - MANUFACTURER
www.simonrack.com

www.simonrack.com



Management System
ISO 9001:2008
www.tuv.com
ID 910504425

INSTRUCTIONS



On-line instructions: www.instructionsrack.com/autoclick

www.simonrack.com • www.simonrack.com • www.simonrack.com • www.simonrack.com

SIMONCLASSIC

BOLTS SYSTEM



Up to: **150 Kg**
(331 lb)
Kg/Shelf
Uniformly Distributed Load



SIMONCLICK

NO BOLTS SYSTEM



Up to: **400 Kg**
(882 lb)
Kg/Shelf
Uniformly Distributed Load



SIMONOFFICE

NO BOLTS SYSTEM



Up to: **275 Kg**
(606 lb)
Kg/Shelf
Uniformly Distributed Load



SIMONTALLER

NO BOLTS SYSTEM



Up to: **700 Kg**
(1543 lb)
Kg/Shelf
Uniformly Distributed Load



BANCOS DE TRABAJO

Up to: **800 Kg**
(1764 lb)
Kg/Shelf
Uniformly Distributed Load



ALTILLOS Y PASILLOS ELEVADOS



SIMONHOME

Up to: **150 Kg**
(331 lb)
Kg/Shelf
Uniformly Distributed Load



TAQUILLAS



SIMONINOX

NO BOLTS SYSTEM



Up to: **900 Kg**
(1984 lb)
Kg/Shelf
Uniformly Distributed Load



SIMONTITÁN

NO BOLTS SYSTEM

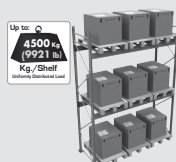


Up to: **900 Kg**
(1984 lb)
Kg/Shelf
Uniformly Distributed Load



SIMONPALET

Up to: **4500 Kg**
(9921 lb)
Kg/Shelf
Uniformly Distributed Load



SIMONLEVER

