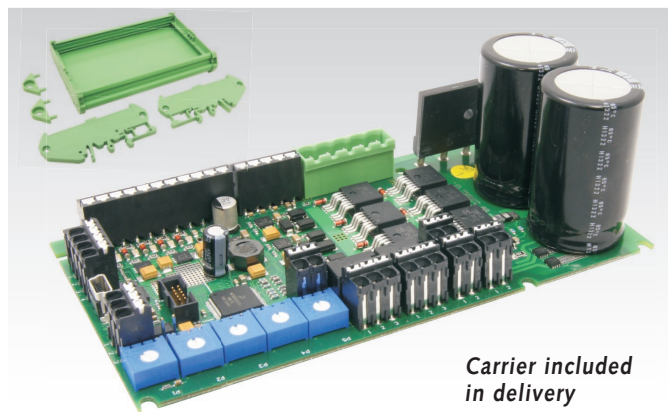


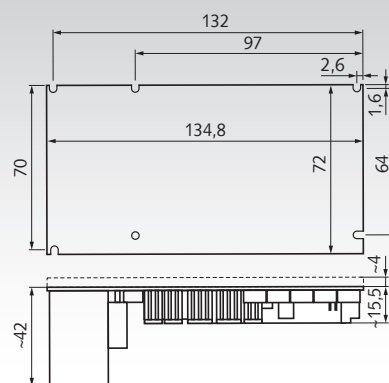
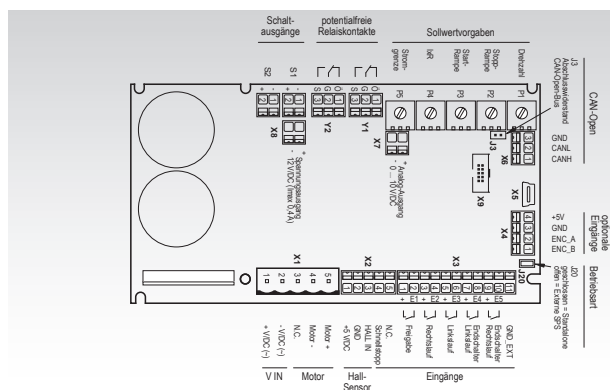
Motor controller SFRG 3 for DC-drives

- Intelligent motor controller with PWM output for speed setting or controlling (option) of brushed DC motors.
- Supply voltages: 10 - 36 V DC or 10 - 24 V AC.
- Motor current up to 10 A continuous load.
- CANopen.
- 5 potential-free switching inputs or 5 voltage input signals 10 - 24 V (switchable per jumpers), 5 setting potentiometers.
- 2 counting inputs for hall sensors or encoder.
- 2 switching outputs, max. 1.5 A.
- 2 zero-voltage relays with changeover contacts.
- Output 12V DC max. 0,4 A, e.g. to supply stop switches.
- Ramp function for start / stop.
- Motor current monitoring.
- pre-programmed functions: Left, right, stop, release.

Ordering Details: Product No. 430 460 30, Control Unit SFRG 3



Carrier included in delivery

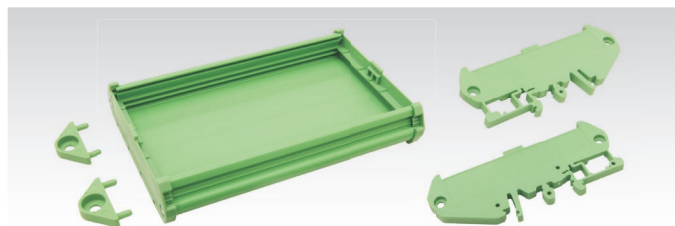


Product No. 430 460 30, Control Unit SFRG 3

Electrical data

| | |
|-----------------------------|---|
| Supply voltage: | 10 V... 36 V DC/10 V... 24 V AC. |
| Motor nominal current: | 10 A continuous load (peak current max. 25 A). |
| Motor current limit: | adjustable (stepless 0-100 % in 1% steps). |
| Speed setting range: | up to 50:1 (setting mode IxR / controlled operation.) |
| Digital inputs: | potential-free NO contact, approx. 2 mA or voltage input signals 10 - 24V DC, (switchable per jumpers). |
| Output switching frequency: | approx. 18 kHz. |
| Switching outputs: | max. 1.5 A. |
| Relay outputs: | max. 1A / 24 V DC. |
| Ramp function: | Rise time/fall time 0-100 % in 1% steps. |
| Interfaces: | CANopen. |

Carrier for SFRG 3



Plastic carrier for easy mounting of motor controller SFRG 3 on a rail EN 60715 width 35 mm or at a housing wall.
Total height of SFRG 3 with carrier, on a DIN rail with height 7.5 mm: 76 mm. Total height of SFRG 3 with carrier, at a wall: 60 mm.
This carrier is included in delivery of motor controller SFRG 3.

General data

| | |
|--|--|
| Connector technology: | plug-in spring-type terminals. |
| Approvals: | complies to the CE standard. |
| Protection class: | 3. |
| Protection rating: | open module IP00 as per IEC529 / EN 60529 / DIN VDE 0470 T1. |
| Isolation: | Low voltage operation. not needed. |
| Shock protection: | |
| Level of contamination: | 2. Weight 120 g. |
| Permissible ambient operating temperature: | -10 to +60°C. |
| The circuit board is designed for installing in a closed control cabinet or similar housing made from metal with protection class IP 4x. Adequate ventilation is to be provided (free convection). The wiring has to be carried out as per EMC requirements. | |
| Application specific matching of the software functions is possible, as well as terminal connection for external pots as an option. | |