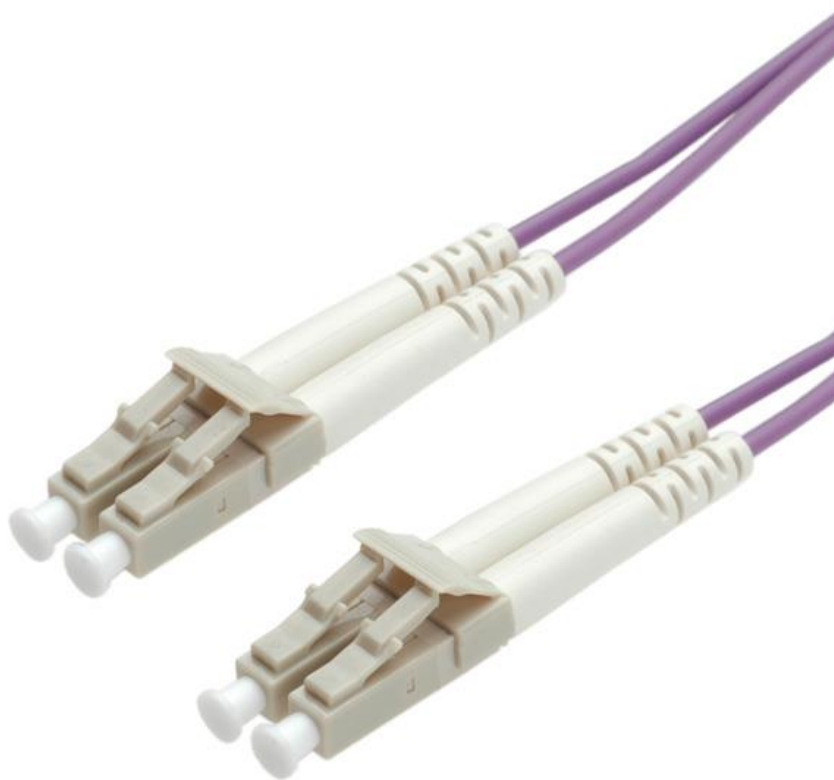




Datenblatt - Fiche technique - Data sheet

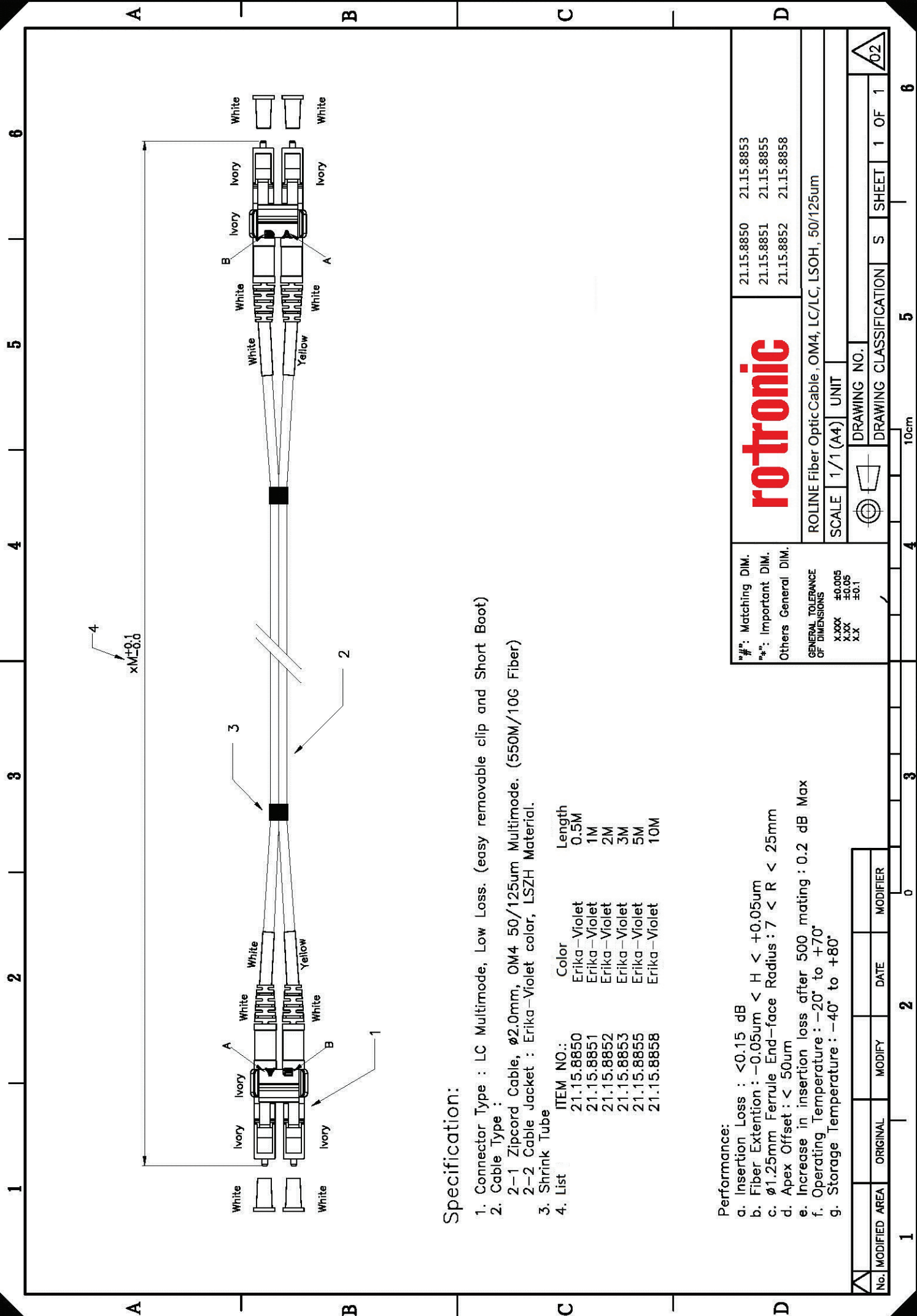
**21.15.8850**



ROLINE LWL-Kabel 50/125 $\mu$ m OM4, LC/LC, Low-Loss-Stecker, 0,5m

ROLINE Câble FO 50/125 $\mu$ m OM4, LC/LC, connecteurs Low-Loss, 0,5m

ROLINE FO Jumper Cable 50/125 $\mu$ m OM4, LC/LC, Low-Loss-Connector, 0,5m



**Specification:**

1. Connector Type : LC Multimode, Low Loss. (easy removable clip and Short Boot)
2. Cable Type :
  - 2-1 Zipcord Cable,  $\phi 2.0\text{mm}$ , OM4 50/125um Multimode. (550M/10G Fiber)
  - 2-2 Cable Jacket : Erika-Violet color, LSZH Material.
3. Shrink Tube
4. List

ITEM NO.:	Color	Length
21.15.8850	Erika-Violet	0.5M
21.15.8851	Erika-Violet	1M
21.15.8852	Erika-Violet	2M
21.15.8853	Erika-Violet	3M
21.15.8855	Erika-Violet	5M
21.15.8858	Erika-Violet	10M

**Performance:**

- a. Insertion Loss :  $< 0.15 \text{ dB}$
- b. Fiber Extension :  $-0.05\mu\text{m} < H < +0.05\mu\text{m}$
- c.  $\phi 1.25\text{mm}$  Ferrule End-face Radius :  $7 < R < 25\text{mm}$
- d. Apex Offset :  $< 50\mu\text{m}$
- e. Increase in insertion loss after 500 mating :  $0.2 \text{ dB Max}$
- f. Operating Temperature :  $-20^\circ \text{ to } +70^\circ$
- g. Storage Temperature :  $-40^\circ \text{ to } +80^\circ$

<b>rotronic</b>		21.15.8850	21.15.8853
		21.15.8851	21.15.8855
		21.15.8852	21.15.8858
ROLINE Fiber Optic Cable, OM4, LC/LC, LSOH, 50/125um			
SCALE 1/1 (A4)		UNIT	
DRAWING NO.		DRAWING CLASSIFICATION	
10cm		SHEET 1 OF 1	
4		5	
3		6	
2		1	
1		0	

No.	MODIFIED AREA	ORIGINAL	MODIFY	DATE	MODIFIER
1					