

## Reference sheets in precision design

Shaped sections

L<sub>3</sub>

### Application:

For setting up tools, adjusting apparatuses, levelling tolerances, aligning devices, aligning workpieces etc.

### Execution:

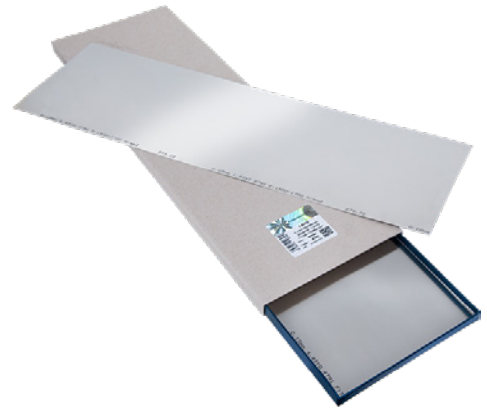
- Cold-rolled INOX spring steel
- Alloy with 17% chromium and 7% nickel
- Corrosion-resistant
- High strength
- Weakly magnetic

### Advantage:

- Advantage over rolled materials: evenly aligned

### Delivery:

In sturdy sliding carton



<b>Art. no.</b>	<b>36241 100</b>
<b>Brand</b>	H+S
<b>Manufacturer Part Number</b>	901000
<b>Material</b>	Chrome-nickel-steel
<b>Material number</b>	Stainless steel A2 1.4310
<b>Nominal thickness</b>	1 mm
<b>Length x width</b>	500 x 150 mm
<b>Width</b>	150 mm
<b>Length</b>	500 mm
<b>Number of pieces in assortment/set</b>	5
<b>Gross Weight</b>	3.313 kg
<b>Product Group</b>	360

### EAN

4250760507660