

## HEINE BETA® 200 Fiber Optic (F.O.) VET Otoscope

### Veterinary Otoscope with Fiber Optic illumination



Solid, all-metal construction. A quality instrument for the Vet's office with Fiber Optic (F.O.) illumination. Insufflation port. The swivel window features an airtight seal.

- ⌘ **Distal Fiber Optic illumination.** Perfectly even illumination of auditory canal and tympanum.
- ⌘ **Large, scratch-resistant glass viewing window with 2.5x magnification.** Unobstructed view, distortion-free image.
- ⌘ **Swivelling viewing window built into instrument.** Useful for instrumentation, cannot be mislaid.
- ⌘ **Insufflation port.** Reliable test of tympanic mobility.
- ⌘ **Durable metal body, matt chrome-plated.** Unbreakable, long-life.
- ⌘ **XHL Xenon Halogen Technology.** Extremely bright, white light.
- ⌘ **For use with reusable SANALON S VET Specula (G-000.21.213).**
- ⌘ **Instrument head matt-black inside.** Eliminates reflexes.



Fiber Optic (F.O.) illumination

<b>BETA 200 VET Otoscope</b>	<b>2.5V</b>	<b>3.5V</b>
without specula, without handle	<b>G-001.21.250</b>	<b>G-002.21.250</b>
XHL Xenon Halogen spare bulb	<b>X-001.88.077</b>	<b>X-002.88.078</b>

## HEINE BETA® 100 VET Otoscope

### Veterinary Otoscope with direct illumination

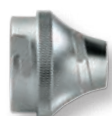


Otoscope with all-metal construction and direct Xenon Halogen illumination. Suitable for use with short, closed specula. With the use of the VET adaptor, it is possible to fit reusable VET specula for ear examinations.

- ⌘ **All-metal housing.** Exceptionally-tough and long-lasting.
- ⌘ **XHL Xenon Halogen Technology.** Extremely bright, white light.
- ⌘ **Large, scratch-resistant glass viewing window with 2.5x magnification.** Unobstructed view, distortion-free image.
- ⌘ **Swivelling viewing window built into instrument.** Useful for instrumentation, cannot be mislaid.
- ⌘ **Insufflation port.** Reliable test of tympanic mobility.
- ⌘ **Can be used with short, closed specula G-000.21.316 (no adaptor required).**
- ⌘ **Versatile, useful for very small animals.**
- ⌘ **Instrument head matt-black inside.** Eliminates reflexes.



Direct Xenon Halogen illumination



[01]



[02]

<b>BETA 100 VET Otoscope</b>	<b>2.5V</b>	<b>3.5V</b>
without specula, without handle	<b>G-001.21.260</b>	<b>G-002.21.260</b>
XHL Xenon Halogen spare bulb	<b>X-001.88.037</b>	<b>X-002.88.049</b>
Adaptor for reusable SANALON S VET specula [01]	<b>G-000.21.214</b>	
Adaptor for AllSpec tips [02]	<b>B-000.11.306</b>	