

PCB TERMINAL BLOCKS

5.08mm Pitch Standard Profile Rising Clamp Terminal

- 2 & 3 pole double interlocking mechanism for increased strength
- 4 -12 pole pre-assembled
- Moulded in grey UL94-V0 flame retardant PA
- Professional rising clamp terminals
- Moulded in grey UL94-V0 flame retardant PA
- 2.5mm² cable entry
- cULus, CE, approved
- Guided pin alignment
- Captive screws

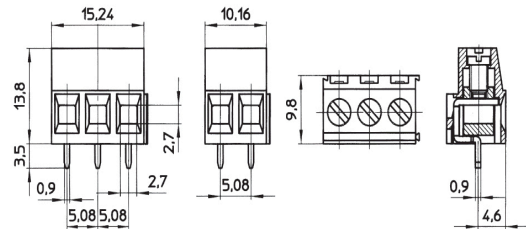
CTB0109



TYPE NO.	POLES	LENGTH
CTB0109/2	2	10.2mm
CTB0109/3	3	15.2mm
CTB0109/4	4	20.3mm
CTB0109/5	5	25.4mm
CTB0109/6	6	30.5mm
CTB0109/7	7	35.6mm
CTB0109/8	8	40.6mm
CTB0109/9	9	45.7mm
CTB0109/10	10	50.8mm
CTB0109/11	11	55.9mm
CTB0109/12	12	61mm

SPECIFICATION

Rating	24A/250V, UL=14A, CUL=14A, IMQ=24A, VDE=24A
Dielectric strength	≥2.0kV
Impulse withstand voltage	4kV
Working temperature	110°C
Moulding	UL94-V0 flame retardant PA
Pin/terminal	Tinned, nickel plated brass
Wire/clamp	Nickel plated steel
Screw/torque	M3 steel zinc plated, 0.5Nm
Recommended PCB hole size	ø1.5mm



PCB
TERMINAL
BLOCKS

INTER-
CONNECTION

FUSES &
FUSE-
HOLDERS

LEDs &
INDICATORS

MINIATURE
SWITCHES

LIMIT &
SAFETY
SWITCHES

CONTROL
PRODUCTS

INTERFACE
MODULES &
SUPPORTS

RELAY
BASES

ENCLOSURES

BATTERIES

TRANS-
FORMERS



+44 (0)1638 716101
info@camdenboss.com
www.camdenboss.com

We operate a constant improvement policy,
our products are subject to change without notice.

Ver 1.0

CAMDENBOSS
ELECTRONICS & ENCLOSURES