

Tubular Handles

24321.0560

Product Description

Tubular handles are used, for example, on machine doors. These tubular handles made of aluminium are characterised by their ergonomic and robust construction and modern design. This version is equipped with angled handle legs (legs).



Material

Cap

- Plastic, light grey

Handle

- Aluminium, plastic coated, similar to RAL 9005 black, matt structure

Assembly

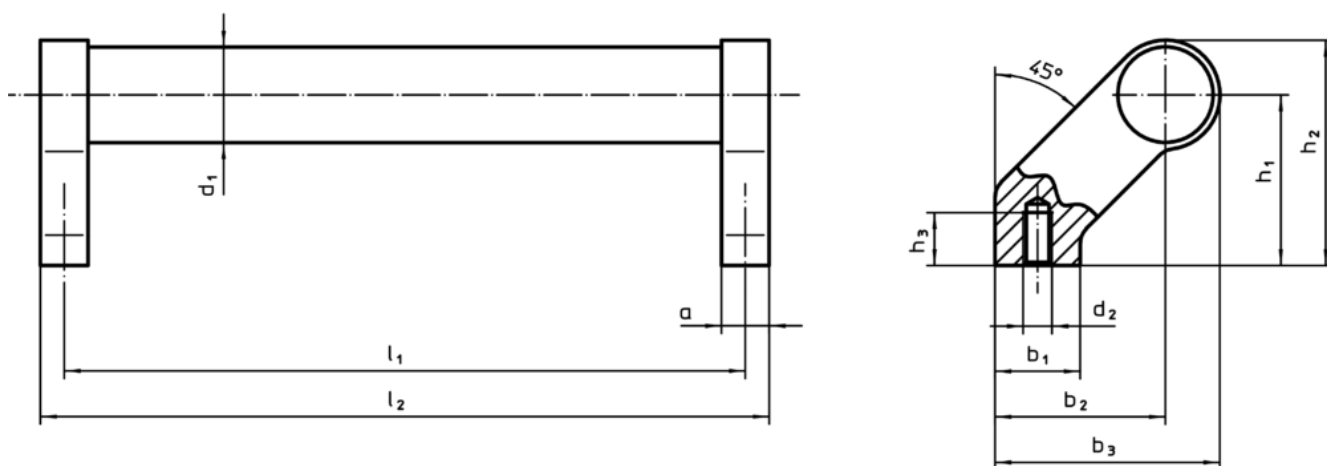
Back mount handle.

More information

Notes

Special types on request.

Drawing



Order information

d_1	l_1 ± 0.25	a	b_1	b_2	Dimensions			d_2	h_1	h_2	h_3 min.	l_2	[g]	Art. No.
					b_3	[mm]								
28	500	14	25	50	66	M8		50	66	15	514	572	24321.0560	

Compliance

RoHS compliant

Contains lead - compliant according to exceptions 6a / 6b / 6c

Contains SVHC substances >0,1% w/w

Contains lead - SVHC list [REACH] as of 10.06.2022

Contains Proposition 65 substances



Lead can cause cancer and reproductive harm from exposure
<https://www.P65Warnings.ca.gov/>

Free from Conflict Minerals

This product does not contain any substances designated as "conflict minerals" such as tantalum, tin, gold or tungsten from the Democratic Republic of Congo or adjacent countries.