

1 KNOB

High-resilience polypropylene based (PP) technopolymer.

STANDARD EXECUTIONS

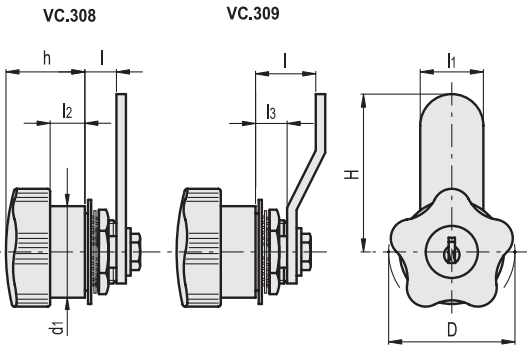
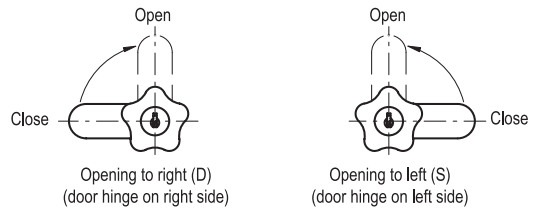
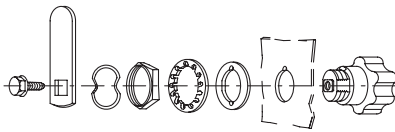
- Lock with stainless steel front plate, movement of the knob at 90°.
- Two nickel-plated brass keys, removable in two positions at 180° (locked or unlocked position).
- Opening to the right side (D) or left side (S).
- Stator and rotor in Zamac.
- Locking nut in brass.
- Spring washer in zinc-plated steel.
- Positioning washer in zinc-plated steel, thickness 1.2 mm to be welded to the metal sheet of the door for thin thickness.
- Folded closing lever in zinc-plated steel.
- **VC.309**: lock with 400 different combinations. Each lock has a key with different combination.
- **VC.309-U**: lock with one combination. All locks have the same combination and can be opened with the same key.
- **VC.309-M**: lock with 160 different combinations and master-key: each lock has a different combination and relative key. Two master-keys, which open all of them, are supplied for every purchase order.
- **VC.309-SS**: without lock. The knob can be used for opening both to the right or to left side.

ACCESSORIES ON REQUEST

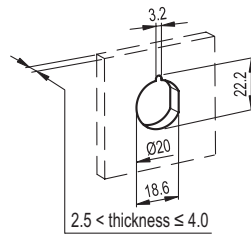
Threaded extension to position the closing lever with l=18 mm.



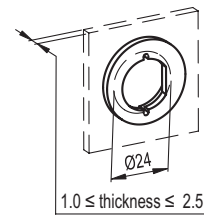
ELESA Original design



Drilling template for direct fitting



Positioning washer (included in the supply) to be welded to the metal sheet of the door for thin thickness



VC.309

Code	Description	D	H	l±0.5	l1	l2	l3	h	d1	⚖
68121	VC.309/40-D	40	48	18	20	11	10	25	29	146
68122	VC.309/40-S	40	48	18	20	11	10	25	29	146

VC.309-U

68123	VC.309/40-UD	40	48	18	20	11	10	25	29	146
68124	VC.309/40-US	40	48	18	20	11	10	25	29	146

VC.309-M

68125	VC.309/40-MD	40	48	18	20	11	10	25	29	146
68126	VC.309/40-MS	40	48	18	20	11	10	25	29	146

VC.309-SS

68131	VC.309/40-SS	40	48	18	20	11	10	25	29	115
-------	--------------	----	----	----	----	----	----	----	----	-----