



Flow control valves with flow pin and filter, low leakage loss

Inch thread

Product Description

- > Sealing of unused suction openings to maintain the system vacuum
- > Ball seat valve with filter (not suitable for high levels of dust or dirt)
- > Suitable for short cycle times
- > Limited leakage prevents premature triggering with porous workpieces
- > Preset at the factory, 63.003 can be adjusted if necessary
- > Vertical mounting, exception of 63.001 to 63.003: Any mounting position

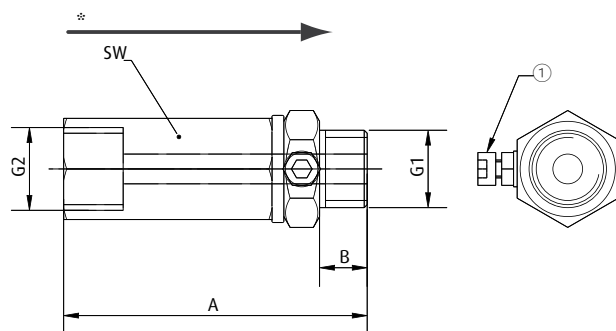
Technical data

Item no.	Suction power to achieve 30 % vacuum [scfm]	Suction power to achieve 60 % vacuum [scfm]	Max. flow rate with blow-off at 72.5 psi [scfm]	Weight [oz]
63.001	0.14	0.25	9.1	0.53
63.002	0.14	0.28	12.6	0.85
63.003	0 - 0.79	0 - 1	19.3	0.88
63.008	0.11	0.11	11.9	0.6
63.011	0.25	0.28	20.7	1.09
63.012	0.28	0.32	27.7	1.73
63.060	0.25	0.28	20.7	0.35

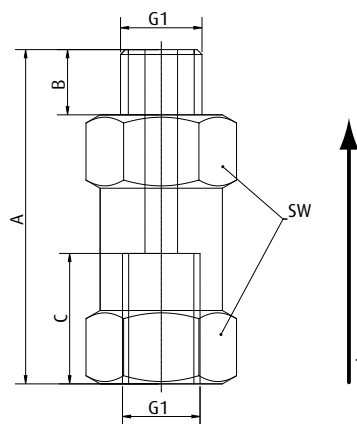
Dimensions

G1	G2	A [mm]	B [mm]	C [mm]	SW
G1/8	G1/8	48.5	6	--	14
G1/4	G1/4	50	10	--	17
G1/4	G1/4	50	8	--	17
G1/4	--	36	10	11	17
G3/8	--	39	10	12	22
G1/2	--	41	12	14	27
R1/8	--	39	10	12	22

Dimensions



63.001 | 63.002 | 63.003



63.008 | 63.011 | 63.012 | 63.060

① = Adjusting screw for 63.003 * = Flow direction