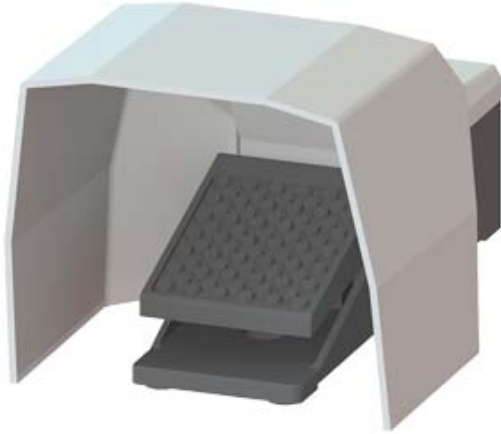


FOOT -OPERATED BUTTON, ( WITHOUT LATCHING)  
SINGLE PEDAL, M20X1,5 CABLE ENTRY IP65, 1NO +  
1NC WITH COVER



Product designation		momentary-contact foot switch
<b>General technical data:</b>		
Protection class IP		IP65
Equipment marking		S
<ul style="list-style-type: none"> <li>• acc. to DIN EN 61346-2</li> <li>• acc. to DIN EN 81346-2</li> </ul>		S
Number of switching steps		1
Number of the actuation pedals		1
Operating current at AC-15		
<ul style="list-style-type: none"> <li>• at 230 V Rated value</li> <li>• at 400 V Rated value</li> </ul>	A	16
	A	16
<b>Enclosure:</b>		
Material of the enclosure		metal
Color		
<ul style="list-style-type: none"> <li>• of the enclosure</li> <li>• of top part of the enclosure</li> </ul>		black
		grey
<b>Safety related data:</b>		
B10 value with high demand rate acc. to SN 31920		1 000 000
Proportion of dangerous failures		
<ul style="list-style-type: none"> <li>• with low demand rate acc. to SN 31920</li> <li>• with high demand rate acc. to SN 31920</li> </ul>	%	50
	%	50
Failure rate [FIT] with low demand rate acc. to SN 31920	FIT	100

T1 value for proof test interval or service life acc. to IEC 61508	y	20
--	---	----

### Mechanical data:

Cable entry type		M20 x 1.5
------------------	--	-----------







### Ambient conditions:



Ambient temperature		
• during operation	°C	-25 ... +80

### Installation/ mounting/ dimensions:

Mounting type		screw fixing
Height	mm	265
Width	mm	156
Depth	mm	138

### Certificates/ approvals:

General Product Approval	Declaration of Conformity	Shipping Approval
 CCC	 EG-Konf.	 ABS
 CSA		 LRS

Shipping Approval	other
 PRS	 RINA
	<a href="#">Confirmation</a>
	<a href="#">other</a>

### Further information

Information- and Downloadcenter (Catalogs, Brochures,...)

<http://www.siemens.com/industrial-controls/catalogs>

Industry Mall (Online ordering system)

<http://www.siemens.com/industrymall>

Cax online generator

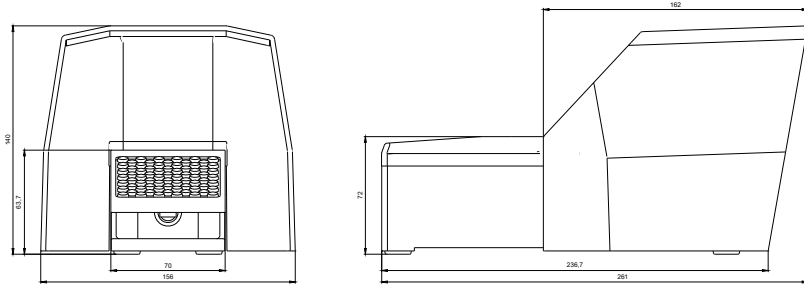
<http://support.automation.siemens.com/WW/CAXorder/default.aspx?lang=en&mlfb=3SE29020AA20>

Service&Support (Manuals, Certificates, Characteristics, FAQs,...)

<http://support.automation.siemens.com/WW/view/en/3SE29020AA20/all>

Image database (product images, 2D dimension drawings, 3D models, device circuit diagrams, EPLAN macros, ...)

[http://www.automation.siemens.com/bilddb/cax\\_de.aspx?mlfb=3SE29020AA20&lang=en](http://www.automation.siemens.com/bilddb/cax_de.aspx?mlfb=3SE29020AA20&lang=en)



last modified:

09.03.2015