

- 1
- 2
- 3
- 4
- 5
- 6
- 7
- 8
- 9
- 10
- 11
- 12
- 13
- 14
- 15
- 16
- 17
- 18

MATERIAL

AISI 304 stainless steel.

ELASTIC RING

AISI 301 stainless steel.

STANDARD EXECUTIONS

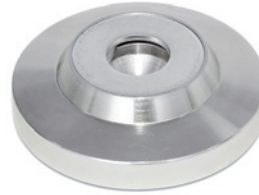
- **GN 6311.5-OS**: with AISI 304 stainless steel clamping surface.
- **GN 6311.5-KR**: no-slip coating in thermoplastic elastomer (TPE), black colour.
- **GN 6311.5-KS**: with acetal based (POM) technopolymer bearing protection, RAL 9001 white colour.

FEATURES AND APPLICATIONS

GN 6311.5 thrust pads are generally used to transmit clamping forces with grub screws DIN 6332 (see page 856).

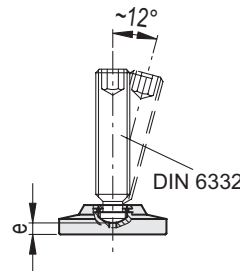
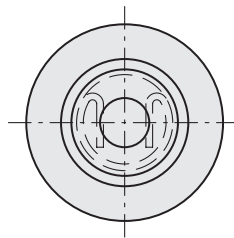
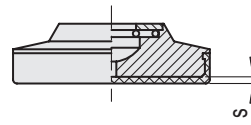
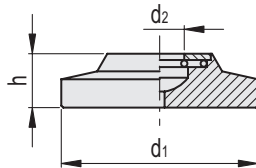
The retaining ring creates a simple and fast coupling between the threaded stud and the thrust pad.

They also adapt to surfaces that are not perfectly flat and allow tightening without transmitting rotation from the grub screw to the thrust pad which remains stationary with respect to the surface to be locked.



GN 6311.5-OS

**GN 6311.5-KR
GN 6311.5-KS**



GN 6311.5-OS

INOX STAINLESS STEEL

Code	Description	d1	d2+0.2	h	e	DIN 6332	⚖
GN.16003	GN 6311.5-50-11.5-OS	50	9.2	11.5	3.7	M12	135
GN.16006	GN 6311.5-50-13.5-OS	50	12.5	13.5	4	M16	144
GN.16012	GN 6311.5-60-13.5-OS	60	12.5	13.5	4	M16	230
GN.16015	GN 6311.5-60-15.5-OS	60	16.5	15.5	4.3	M20	238

GN 6311.5-KR

INOX STAINLESS STEEL

Code	Description	d1	d2+0.2	h	e	s	DIN 6332	⚖
GN.16001	GN 6311.5-50-11.5-KR	50	9.2	11.5	3.7	1.7	M12	118
GN.16004	GN 6311.5-50-13.5-KR	50	12.5	13.5	4	1.7	M16	124
GN.16010	GN 6311.5-60-13.5-KR	60	12.5	13.5	4	1.7	M16	201
GN.16013	GN 6311.5-60-15.5-KR	60	16.5	15.5	4.3	1.7	M20	208

GN 6311.5-KS

INOX STAINLESS STEEL

Code	Description	d1	d2+0.2	h	e	s	DIN 6332	⚖
GN.16002	GN 6311.5-50-11.5-KS	50	9.2	11.5	3.7	1.7	M12	130
GN.16005	GN 6311.5-50-13.5-KS	50	12.5	13.5	4	1.7	M16	134
GN.16011	GN 6311.5-60-13.5-KS	60	12.5	13.5	4	1.7	M16	221
GN.16014	GN 6311.5-60-15.5-KS	60	16.5	15.5	4.3	1.7	M20	229

Standard machine parts