

PLEASE CHECK WWW.MOLEX.COM FOR LATEST PART INFORMATION

Part Number: [0436802002](#)
Status: **Active**
Overview: [Sabre Power Connector](#)
Description: 7.50mm Pitch Sabre Plug Crimp Housing, UL 94V-0, 2 Circuits, Black, Black

Documents:

3D Model (PDF)	Packaging Specification PK-43680-001-001 (PDF)
Drawing (PDF)	Test Summary 444410000-TS-000 (PDF)
3D Model	Datasheet (PDF)
Product Specification PS-44441-9999-001 (PDF)	RoHS Certificate of Compliance (PDF)

Agency Certification

CSA	LR19980
UL	E29179

Application tooling part link

Application Tooling Part Link	63813-0800
-------------------------------	------------

General

Product Family	Crimp Housings
Series	43680
Application	Power, Wire-to-Wire
Comments	Positive mating lock and integrated Terminal Position Assurance (TPA) standard.
Overview	Sabre Power Connector
Product Name	Sabre
UPC	800754366496

Physical

Circuits (maximum)	2
Color - Resin	Black
Flammability	94V-0
Gender	Plug
Glow-Wire Capable	No
Keying to Mating Part	Yes
Lock to Mating Part	Yes
Material - Resin	Nylon
Net Weight	3.236/g
Number of Rows	1
Packaging Type	Bag
Panel Mount	No
Pitch - Mating Interface	7.50mm
Polarized to Mating Part	Yes
Stackable	No
Temperature Range - Operating	-40° to +75°C

Electrical

Current - Maximum per Contact	18.0A
-------------------------------	-------

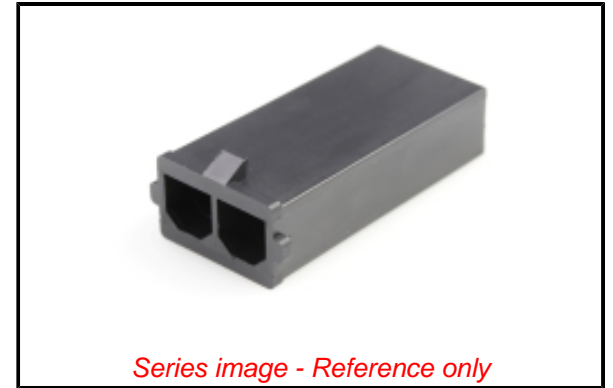
Solder Process Data

Lead-freeProcess Capability	N/A
-----------------------------	-----

Material Info

Reference - Drawing Numbers

Packaging Specification	PK-43680-001-001
Product Specification	PS-44441-9999-001
Sales Drawing	436800000-SD-000



EU ELV

Not Relevant

EU RoHS

Compliant

REACH SVHC

Not Contained Per -
D(2021)4569-DC (8
July 2021)

Halogen-Free

Status

Low-Halogen

For more information, please visit [Contact US](#)

China ROHS

ELV

RoHS Phthalates

China RoHS

Green Image

Not Relevant

Not Contained

Search Parts in this Series

[43680](#) Series

Mates With

Receptacle Housing [444412002](#)

Use With

Male Crimp Terminals [43178](#)

Application Tooling | [FAQ](#)

Tooling specifications and manuals are found by selecting the products below. Crimp Height Specifications are then contained in the Application Tooling Specification document.

Global

Description

Product #

Manual Extraction	638130800
-------------------	---------------------------

Tool

This document was generated on 10/21/2021

PLEASE CHECK WWW.MOLEX.COM FOR LATEST PART INFORMATION