

## MATERIAL

Zinc-plated drawn sheet steel.

## RETAINING COMPONENTS

Zinc-plated steel.

## RETAINING RING

Felt seal (only for dimensions 22 and 30).

## STANDARD EXECUTIONS

- **GN 509-SBL**: steel balls.
- **GN 509-SKU**: acetal resin based (POM) technopolymer main ball, steel transfer balls.
- **GN 509-SNI**: stainless steel balls.

## FEATURES AND APPLICATIONS

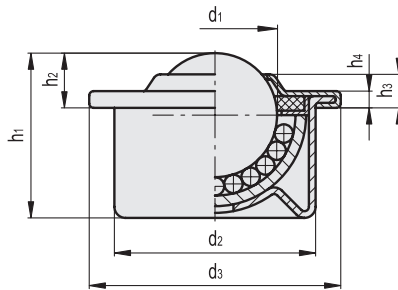
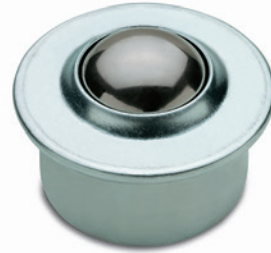
GN 509 ball transfer units are particularly suitable on conveyor tracks. They make linear or rotary movements easier even with heavy loads (see Technical Data on page 977).

## ACCESSORIES ON REQUEST

Spring rings GN 509.3 (see page 978) stainless steel spring rings allow an easy and quick assembly and removal of ball transfer units GN 509.

## SPECIAL EXECUTIONS ON REQUEST

Stainless steel body and balls (GN 509-NNI).



## GN 509-SBL

Code	Description	d1	d2	d3	h1 ±0.3	h2 ±0.3	h3 ±0.3	h4	Max. load carrying capacity [N]	⚖️
GN.23006	GN 509-15-SBL	15.8	24 ±0.065	31	21	9.5	5	2.9	500	40
GN.23011	GN 509-22-SBL	22.2	36 ±0.08	45	29.5	9.8	6	2.9	1200	130
GN.23016	GN 509-30-SBL	30.1	45 ±0.1	55	37.8	13.8	7	3.7	2000	265

## GN 509-SKU

Code	Description	d1	d2	d3	h1 ±0.3	h2 ±0.3	h3 ±0.3	h4	Max. load carrying capacity [N]	⚖️
GN.23010	GN 509-15-SKU	15.8	24 ±0.065	31	21	9.5	5	2.9	70	24
GN.23014	GN 509-22-SKU	22.2	36 ±0.08	45	29.5	9.8	6	2.9	100	93
GN.23019	GN 509-30-SKU	30.1	45 ±0.1	55	37.8	13.8	7	3.7	150	168

## GN 509-SNI

Code	Description	d1	d2	d3	h1 ±0.3	h2 ±0.3	h3 ±0.3	h4	Max. load carrying capacity [N]	⚖️
GN.23007	GN 509-15-SNI	15.8	24 ±0.065	31	21	9.5	5	2.9	300	40
GN.23012	GN 509-22-SNI	22.2	36 ±0.08	45	29.5	9.8	6	2.9	900	130
GN.23017	GN 509-30-SNI	30.1	45 ±0.1	55	37.8	13.8	7	3.7	1500	265

