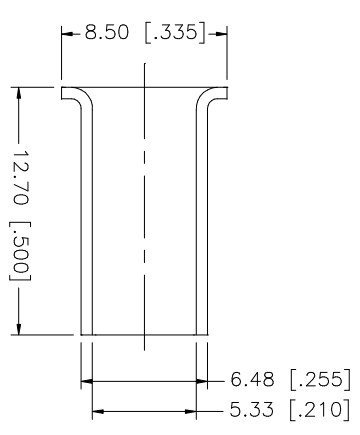
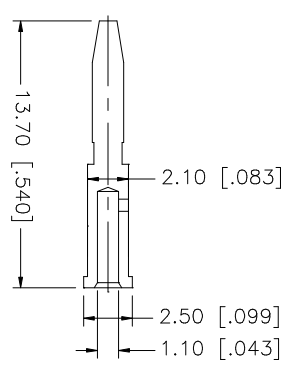
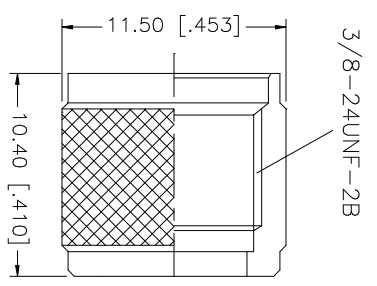
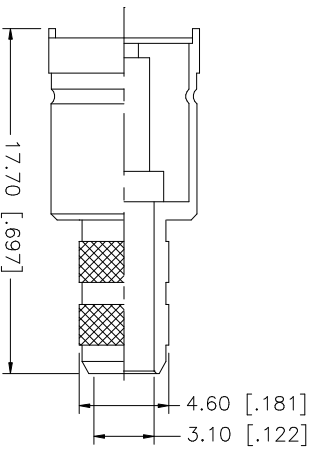
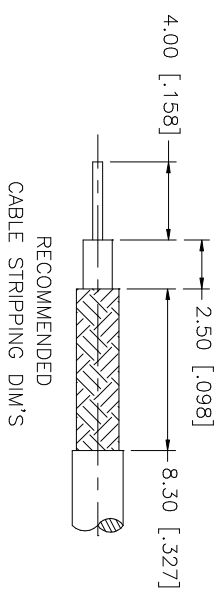


REV.	DATE	DESCRIPTION
A	03/06/03	UPDATE DRAWING FORMAT



QTY	FINISH	MATERIAL	DESCRIPTION
1	NICKEL	COPPER	FERRULE
1	GOLD	BRASS	CONTACT PIN
1	NATURAL	TEFLON	INSULATOR
1	NICKEL	BRASS	SHELL/BODY

DATE	APPROVALS	CAD FILE
03/06/03	G.R.S.	C:/182/182110.DWG

DATE	DESCRIPTION
03/06/03	MINI-UHF CRIMP PLUG (FOR RG-58/U, 141/U, 303/U CABLE)

REV.	SIZE	SCALE
A	A	NA

**Amphenol Connex**

MINI-UHF CRIMP PLUG  
(FOR RG-58/U, 141/U, 303/U CABLE)

182110

UNLESS OTHERWISE SPECIFIED DIMENSIONS ARE IN MILLIMETERS. DIMENSIONS IN [ ] ARE IN INCHES AND FOR CUSTOMER REFERENCE ONLY. TOLERANCES FOR MILLIMETERS ARE:  
0.5 - 8mm ± 0.20mm  
8 - 30mm ± 0.40mm  
30 - 120mm ± 0.50mm  
UNLESS OTHERWISE SPECIFIED TOLERANCES FOR INCHES ARE:  
.020 - .315 = ± 0.007"  
.315 - 1.180 = ± 0.015"  
1.180 - 4.724 = ± 0.020"

DO NOT SCALE DRAWING