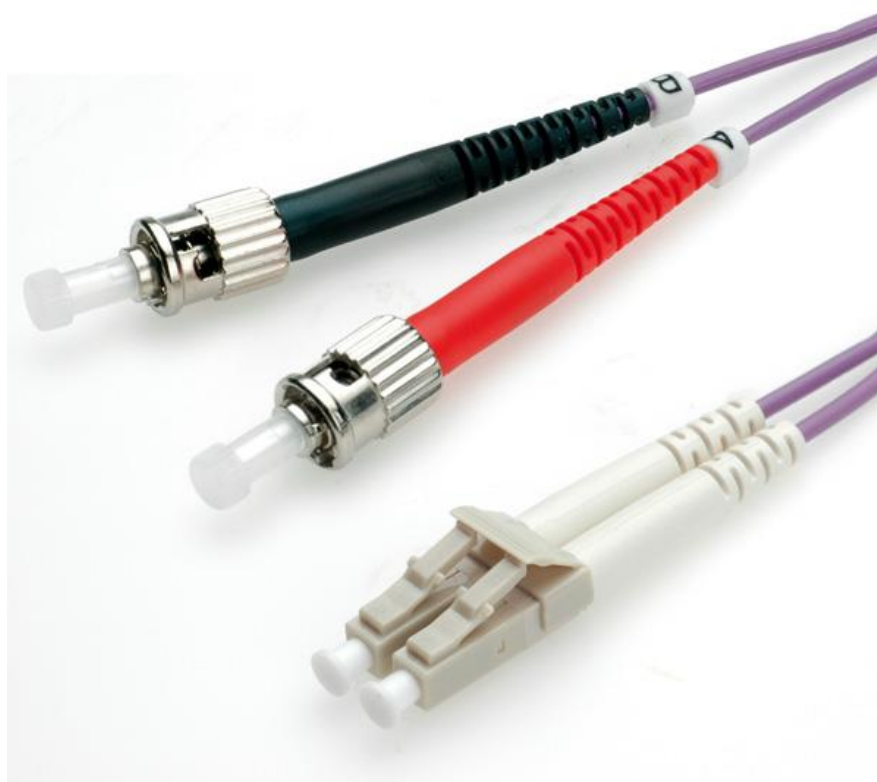




Datenblatt - Fiche technique - Data sheet

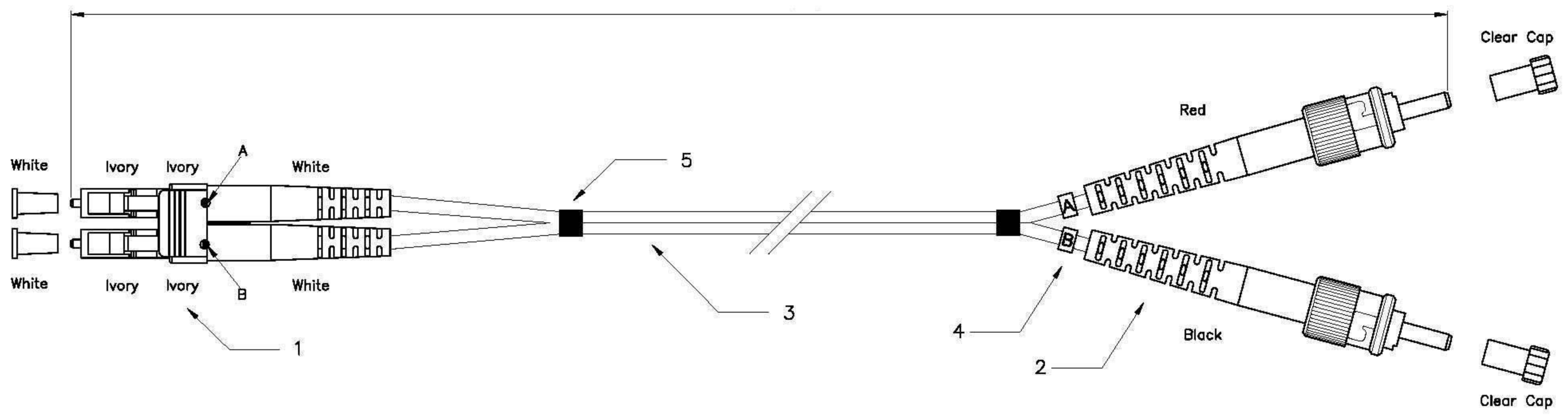
**21.15.8778**



ROLINE LWL-Kabel 50/125 $\mu$ m OM4, LC/ST, violett, 10m

ROLINE Câble FO 50/125 $\mu$ m, LC/ST, OM4, violet, 10m

ROLINE Fibre Optic Jumper Cable, 50/125 $\mu$ m, LC/ST, OM4, purple, 10 m



**Specification:**

1. Connector Type : LC Multimode
2. Connector Type : ST Multimode
3. Cable Type :  
 3-1 Zipcord Cable, ø2.0mm, 50/125um Multimode. (OM4 Corning Fiber)  
 3-2 Calbe Jacket : Purple Color, PVC Material.
4. Cable Marker
5. Shrink Tube

**Performance:**

- a. Insertion Loss : <0.5 dB
- b. Fiber Extention :  $-0.05\mu\text{m} < H < +0.05\mu\text{m}$
- c. ø1.25mm Ferrule End-face Radius :  $7 < R < 25\text{mm}$   
 ø2.5mm Ferrule End-face Radius :  $8 < R < 25\text{mm}$
- d. Apex Offset : < 50um
- e. Increase in insertion loss after 500 mating : 0.2 dB Max
- f. Operating Temperature :  $-20^{\circ}$  to  $+70^{\circ}$
- g. Storage Temperature :  $-40^{\circ}$  to  $+80^{\circ}$
- h. Bending radius: 0.5~1m : 90mm, 2~3m : 80mm, 5~10m : 70mm

<b>Item No.:</b>	<b>21.15.8770</b>	<b>0.5m</b>
<b>Item No.:</b>	<b>21.15.8771</b>	<b>1.0m</b>
<b>Item No.:</b>	<b>21.15.8772</b>	<b>2.0m</b>
<b>Item No.:</b>	<b>21.15.8773</b>	<b>3.0m</b>
<b>Item No.:</b>	<b>21.15.8775</b>	<b>5.0m</b>
<b>Item No.:</b>	<b>21.15.8778</b>	<b>10.0m</b>

GENERAL TOLERANCE OF DIMENSIONS X.XXX ±0.005 X.XX ±0.05 X.X ±0.1	DRAWING	12.APR.2011	ZCY	<b>Rotronic Co., Ltd.</b>
	CHECK	12.APR.2011	YTY	
	APPROVAL	12.APR.2011	FRANK	
		DATE	NAME	
SCALE	1/1 (A4)	UNIT	mm	ROLINE F. O. Cable, LC-ST, OM4
				DRAWING CLASSIFICATION   S   SHEET   1 OF 1